

IMPORTANT

*Report in part or whole
cannot be quoted or
reproduced*

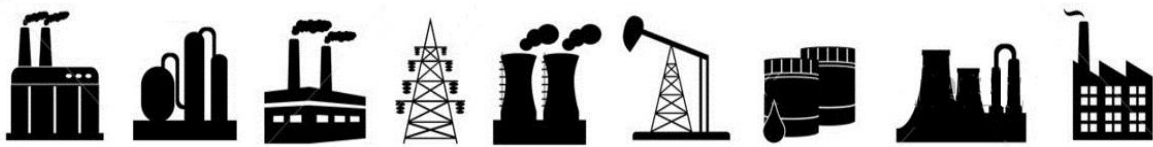
RESTRICTED

For official use only

MAY 2025



**MONTHLY SURVEY OF INDUSTRIAL
PRODUCTION & EMPLOYMENT IN THE PUNJAB**



BUREAU OF STATISTICS

Planning & Development Board
Government of the Punjab, Lahore
www.bos.gop.pk

PREFACE

Bureau of statistics has been issuing this Monthly Survey of Industrial Production and Employment Report since October 1972. This report provides important statistics in respect of industrial production & employment, employment cost and other aspects of manufacturing activities e.g. consumption of raw material, export of industrial products, import of raw material and productivity of labour etc. These statistics are pre-requisite for sound economic planning as well as for measuring the performance/growth of the industrial sector (GDP estimates regarding industrial sector).

This report contains statistics regarding 46 important industries, manufacturing about almost selected items, contributing 72% of the total value added of large scale manufacturing sector in the province. This report covers more than 2000 industrial units from all over the Punjab.

This report gives information regarding General Index as compared to base period 2005-06, and comprehensive analytical note over the current status of the industrial growth at different sectors. Tables of production & employment give comparisons with the previous month and the same month of the previous year as well as comparisons among financial periods. Performance analysis of 13 major items pertaining to detailed tables & graphical explanation is given in this report.

All possible efforts have been made to incorporate the latest available data in this report. It is hoped that this report will be useful to the policy makers, planners, researchers and other users of industrial/economic data in public as well as private sector.

Suggestions for further improvements will be welcomed.

(SAJID RASUL)
Director General
Bureau of Statistics,
Government of the Punjab

CONTENTS

Sr.#	Description	Page #
i	Explanatory Note	I – IV
ii	Table of General Index of Industrial Production	1
iii	Analytical Note: Industrial Production and Employment April 2025	2 - 3

TABLES

1	Production Volume of Selected Items Pertaining to Large-Scale Manufacturing Sector, May 2025 VS April 2025	4 - 5
2	Production Volume of Selected Items Pertaining to Large-Scale Manufacturing Sector, May 2025 VS May 2024	6 - 7
3	Production Volume of Selected Items Pertaining to Large-Scale Manufacturing Sector, 2024-25 (Jul - May:) VS 2023-24 (Jul – May:)	8 - 9
4	Total Employment Regarding Large-Scale Industries, May 2025, April 2025 and May 2024	10
5	Total Number of Production Workers Regarding Large-Scale Industries April 2025, May 2025 and May 2024	11
6	Average Monthly Total Employment Regarding Large-Scale Industries, 2024-25 (Jul - May:) VS 2023-24 (Jul - May:)	12
7	Average Monthly Number of Production Workers Regarding Selected Large Scale Industries, 2024-25 (Jul - May:) VS 2023-24 (Jul – May:)	13

ANNEXURES

I	Performance of Cotton Textile Industry	14 - 20
II	Performance of Woollen Textile Industry	21 - 23
III	Performance of Vegetable Ghee/Cooking Oil Industry	24 - 28
IV	Performance of Beverages Industry	29 - 30
V	Performance of Sugar Industry	31 - 33
VI	Performance of Cigarettes Industry	34 - 35
VII	Performance of Cement Industry	36 - 40
VIII	Performance of Fertilizer Industry	41 - 46
IX	Performance of Footwear Industry	47 - 48
X	Performance of Leather Tanning Industry	49 - 50
XI	Performance of Paper & Paper Board Industry	51 - 52
XII	Performance of Light Engineering Industry	53 - 59
XIII	Performance of Pharmaceutical Industry	60 - 63

APPENDIX

A	Telephone Numbers	64
---	-------------------	----

List of Tables

Table No.	Title of Table	Page No.
1	General Index of Industrial Production	1
2	Production Volume of Selected Items Pertaining to Large-Scale Manufacturing Sector, May -2025 VS April -2025	4
3	Production Volume of Selected Items Pertaining to Large-Scale Manufacturing Sector, May -2025 VS May 2024.	6
4.	Production Volume of Selected Items Pertaining to Large-Scale Manufacturing Sector 2024-25,(July- May) VS 2023-2024 (July- May)	8
5	Total Employment Regarding Selected Large-Scale Industries, April 2025, May 2025 and May 2024.	10
6	Total Number of Production Workers Regarding Selected Large-Scale Industries April 2025, May 2025 and May 2024	11
7.	Average Monthly Total Employment Regarding Selected Large-Scale Industries 2024-25 (July- May) and 2023-24 (July- May)	12
8	Average Monthly Production Workers regarding selected Large-Scale Industries 2024-25 (July- May) and 2023-24 (July- May)	13
9	Production of Man Made/Blended Yarn and Cloth	15
10	Detail of the Purchase, Sale Consumption and Stock of Cotton Bales.	17
11	Production, Purchase, Consumption, Sale and Stock of Cotton Yarn	18
12	Production .Purchase, Sale and Stock of Cotton Cloth	19
13	Employment, Wages/Salaries of Cotton Textile Industry	20
14	Manufacturing Activity of Woollen Industry	23
15	Detail of the Stock Purchase, Consumed and Sale of Edible Oil	26
16	Detail of Production, Sale and Stock of Vegetable Ghee/Cooking Oil	27
17	Employment, Wages/Salaries of Vegetable Ghee/Cooking Oil Industry	28
18	Manufacturing Activity of Beverages Industry	30
19	Manufacturing Activity of Sugar Industry	32
20	Employment, Wages/Salaries of Sugar Industry	33
21	Manufacturing Activity of Cigarettes Industry	35
22	Detail of Production, Consumption and Stock of Clinker	38
23	Detail of Production, Sale and Stock of Cement	39
24	Employment and Wages/Salaries of Cement Industry	40
25	Detail of Production, Sale and Stock of Urea and Amm. Sulphate	43
26	Detail of Production, Sale and Stock of Super Phosphate and Amm.Nitrate	44
27	Detail of Production, Sale and Stock of Nitro Phosphate	45
28	Employment Wages/Salaries of Fertilizer Industry	46
29	Manufacturing Activity of Footwear Industry	48
30	Manufacturing Activity of Leather Tanning Industry	50
31	Manufacturing Activity of Paper and Paper Board Industry	51
32	Manufacturing Activity of Light Engineering Industry	57
33	Total Employment of Light Engineering Industry	58
34	Production Workers of Light Engineering Industry	59
35	Manufacturing Activity of Pharmaceutical Industry	62
36	Employment and Wages/Salaries of Pharmaceutical Industry	63

List of Figures

Fig. No.	Title of Figures	Page No.
1	Quantum Index of Manufacturing Industries	1
2	Production of Cotton Yarn	16
3	Production of Cotton Cloth	16
4	Production of Knitting Wool	21
5	Production of Woollen Yarn	22
6	Production of Woollen and Worsted Cloth	22
7.	Production of Vegetable Ghee	24
8	Production of Cooking Oil	25
9	Production of Vegetable Ghee/Cooking Oil	25
10	Production of Fruit Juices	29
11	Production of Soft Drinks	29
12	Production of Sugar	31
13	Production of Cigarettes	34
14	Production of Clinker	36
15	Production of Cement	37
16	Production of Urea	41
17	Production of Super Phosphate	42
18	Production of Amm. Nitrate	42
19	Production of Nitro Phosphate	42
20	Production of Footwear	47
21	Production of Upper Leather	49
22	Production of Sole Leather	49
23	Production of Paper	51
24	Production of Paper Board	51
25	Production of Re-Rolled Steel	53
26	Production of Bicycles	54
27	Production of Electric Fans	55
28	Production of Electric Motors	56
29	Production of Diesel Engines	56
30	Production of Tablets	60
31	Production of Liquids	61
32	Production of Capsules	61
33	Production of Injections	61

EXPLANATORY NOTE

To have current information on production, employment and other aspects of manufacturing activities e.g. consumption of raw material, wages/salaries, export of industrial products, imports of raw material and productivity of labour etc. for economic planning, evaluation of industrial development and taking other policy related decisions, Government of the Punjab had decided in October 1972 to undertake a Monthly Survey on Industrial Production and Employment.

Prior to this Survey, the only data available on Industrial Statistics was the results of Census of Manufacturing Industries (C.M.I) that were available with the time lag of 2-3 years with a question mark on very high rate of non- response. This high rate of non-response affected the consistency of the results. Therefore, these results were of little use for current and future planning except for historical, research and academic interests/purposes. So Monthly Survey of Industrial Production and Employment was considered to be suitable for Economic Planning as well as for measuring the performance/growth of the industrial sector.

Only 15 industries and their 113 factories were selected to cover initially in October 1972. This report now contains statistics regarding 46 important industries, manufacturing about 100 selected items, contributing 72% of the total value added of large scale manufacturing sector in the province based on base year 2005-06 and covers more than 2000 industrial units from all over the Punjab.

Questionnaire

Keeping in view the pre-determined purpose the data on Industrial Inputs (raw material), Outputs (finished products), Sales, exports, Stocks, Employment & Employment Cost etc. are designed on the available information from CMI returns. These Questionnaires have been pre-tested in some of the large units manufacturing the respective items.

Methodology

Basically it is a mail enquiry. The respondents are the factory owners or the factory management (i.e. Accountants, Finance Manager, and Mill Manager etc.) The blank questionnaires of various industries are used to be mailed out to the factories for their use for the supply of the required information every month. About 60% to 70% questionnaires are received through mail. While the remaining non-responding industrial units are visited by the officers/officials of this Bureau during the third week of the following month for collection of requisite information.

Editing

The received questionnaires are statistically examined for the accuracy and consistency by comparing the production and employment levels of the current month with previous month and same month of the last year. The information of the factories which could not be collected during the month due to the absence of the concerned person or due to other reason is estimated on the basis of the last months average production or the last month information is repeated.

Tabulation

The information collected is tabulated on working sheets prepared for this purpose and also on computer for each industry/factory. Seven tables are prepared every month on production, total employment and production workers as well as comparisons are made with respect to last month, with same month of the last year and among current & previous financial years.

General index / Quantum Index of Manufacturing (QIM)

At present Punjab Bureau of Statistics is computing Index on Industrial Production using 2005-06 as base year. Index series is given in this report by using Laspayer's Index since 2006-07.

This Bureau initially prepared Index Series using 1970-71 as base year. Later on the base year was shifted to 1980-81 & then in October 2011 the base year was sifted to 2005-06. Majority of some new items are included in the new index series due to their relative weight and some items were discarded due to their negligible weights.

Formula of Quantum Index

$$QIM = \frac{\sum_{i=1}^n \frac{q_{im}}{q_{io}} w_i}{\sum_{i=1}^n w_i} \times 100$$

q_{im} = Production of i^{th} item during the current month

q_{io} = Average Production of the same i^{th} item in the base period (2005-06).

w_i = Weight of the i^{th} item in the base year (2005-06).

$\sum w_i$ = total weight of 46 large scale industries in the base period with respect to the total value added of all the industries covered in CMI in the base year (2005-06).

Final Product

Final product is a CIS report that contains QIM series, analytical note on the performance of Industrial Sector in the province, seven tables, and detailed performance report of some important industries as well.

User Agencies

- i. Ministry of Industries & Production, Government of the Pakistan, Islamabad.
- ii. Pakistan Bureau of Statistics, Government of Pakistan, Islamabad.
- iii. Provincial Bureaus of Statistics, Government of Sindh, KPK and Baluchistan.
- iv. Planning & Development Department, Government of the Punjab.
- v. Punjab Economic Research Institute (PERI).
- vi. Department of Commerce & Industry, Government of the Punjab.
- vii. State Bank of Pakistan

IMPORTANT DEFINITIONS

Factory

An entity where manufacturing process is carried out on any day of the preceding thirty days and in any part of which manufacturing process is being carried on with or without the aid of power or through chemical process. It does not include the Mine subject which comes under the operation of Mines Act 1923.

Large Scale Manufacturing Industries

Establishments where ten or more employees are working are classified as large scale industry.

Employment

This item include all full time and part time employees on the payrolls of operating manufacturing establishment during any part of the pay period of the month specified on the questionnaire. It should include all the employees on paid sick leave paid holidays, and paid vacations. Proprietors and partners of unincorporated business may not be included.

Production Workers

The “Production Workers” includes workers (up through the line-supervisor level) engaged in fabricating, processing, assembling, inspecting, receiving, storing, handling, packing, ware-housing, shipping (but no delivering), maintenance, repair, product development, auxiliary production for plant’s own use (e.g., power plant). Record keeping and other services closely associated with these production operations at the establishment covered by the report.

Non-Production Workers

The employees those are not involved directly in the manufacturing process are called non-production workers. E.g. Managers, Assistants, Clerks, Drivers, Peons, Malies and Chowkidars etc.

Employment Cost

Wages and salaries of all employees including production and non-production workers is called employment cost.

TABLE 1: GENERAL INDEX OF INDUSTRIAL PRODUCTION
FOR THE PERIOD JULY 2018 – MAY 2025
(2005-06=100)

MONTH/ YEAR	2018 - 19	2019 - 20	2020 - 21	2021 - 22	2022 - 23	2023 - 24	2024-25
JUL:	156.5	155.5	160.2	171.1	161.6	157.5	153.6
AUG:	154.3	152.8	155.2	171.8	165.9	164.0	156.7
SEP:	158.1	159.3	169.3	171.0	170.9	163.2	157.3
OCT:	168.7	171.7	176.5	177.6	172.2	159.4	158.5
NOV:	160.6	167.8	179.5	185.1	171.5	159.8	171.4
DEC:	168.7	182.2	216.6	213.2	221.8	208.3	203.5
JAN:	210.3	202.2	208.5	220.5	229.3	223.6	207.2
FEB:	198.9	203.5	207.4	225.1	238.0	224.1	210.1
MAR:	251.9	186.9	213.6	217.8	214.3	181.5	187.1
APR:	197.9	140.0	188.4	183.9	163.6	161.4	164.4
MAY:	175.3	140.0	179.3	172.3	160.9	161.8	165.8
JUN:	160.0	146.3	172.3	181.3	160.3	157.1	
Average*	178.1	166.0	184.5	189.8	183.7	175.2	174.8

* = Geometric Mean

Fig. 1 **Graph of Quantum Index of Manufacturing Industries.**

(2005-06=100)

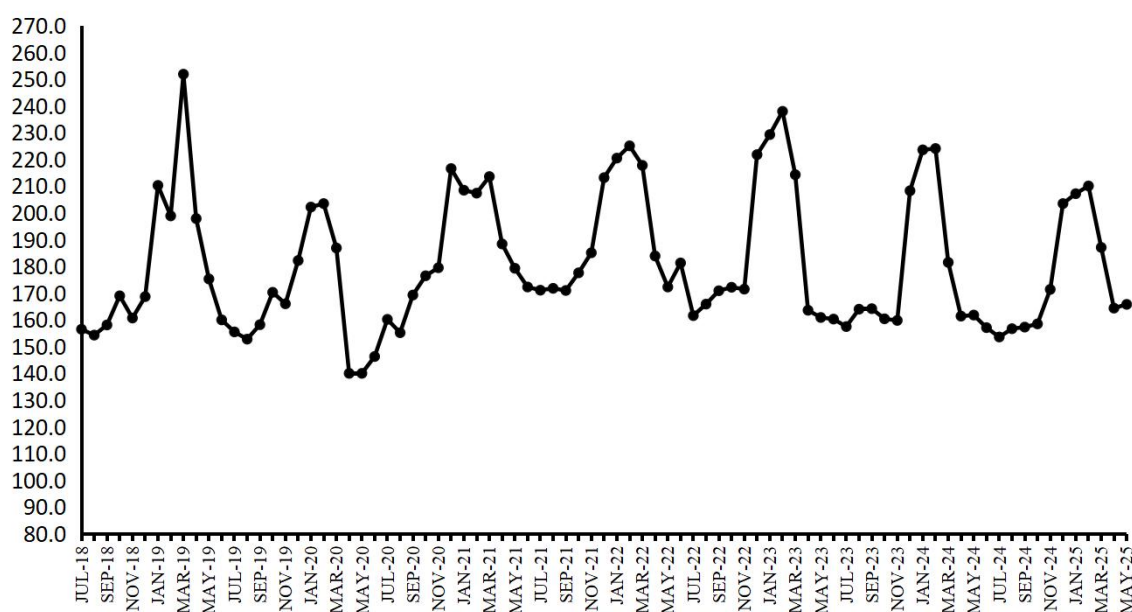


Figure: Graph of QIM for the period of July 2018 to May 2025

ANALYTICAL ANALYSIS

INDUSTRIAL PRODUCTION AND EMPLOYMENT (May 2025)

Coverage

This report covers 2030 industrial units pertaining to large scale industries which contribute about 72 percent of the total value added of Large-Scale Manufacturing sector in the Punjab.

Industrial Production Index

Industrial Production Index for the month of May-2025 stood at 165.8 against 164.4 and 161.8 as compared to April-2025 and May-2024 respectively. Index Series since July-2018 is given in Table-1 on previous page.

Production May 2025 VS April 2025 (Table-2)

Overall production during the month of May -2025 was 0.9 percent higher than April-2025.

The production was lower in case of Dairy Products (12.0%), Fabricated Metal Products/HMC (6.7%) and Tractors (18.4%).

The production was higher in case of Soft Drinks & Juices (14.6%), Basic Inorganic Chemicals/Acids (7.1%), Cement (9.3%), Electric Fans (7.4%), Air-Conditioners (8.9%) and Refrigerators/Deep Freezers (6.1%).

Production May 2025 VS May 2024 (Table-3)

Overall production during May-2025 was 2.5 percent greater than April-2024.

The production was lower in case of Cotton/M. M Blended Yarn (10.4%), Cloth/M. M Blended Cloth (10.0%), Jute Textiles (14.8%), Basic Inorganic Chemicals/Acids (15.3%), Paints & Varnishes (12.9%), Tractors (76.9%), Automobiles Cars/Trucks (9.4%) and Electric Meters (9.0%)

The production was higher in case of Dairy Products (22.4%), Wheat Milling (9.2%), Soft Drinks & Juices (20.8%), Cigarettes (56.8%), Woolen Textiles (6.9%), Fertilizers (6.9%), Cement (9.8%), Steel Bars/ Angles (7.0%), Fabricated Metal Products/HMC (7.7%), Motor Cycles (24.8%), Bicycles (5.8%), Electric Fans (13.5%), Electric Motors (10.0%) and Refrigerators/Deep Freezers (32.9%).

Production July-May 2024-25 VS July-May 2023-24 (Table-4)

Overall production during July-May (2024-25) was 1.2 percent lower than July-May (2023-24)

The production was lower in case of Sugar (8.3%), Cotton/M.M Blended Yarn (8.8%), Cloth/M. M Blended Cloth (16.5%), Jute Textiles (20.8%), Paints & Varnishes (6.9%), Petroleum Products (9.0%), Tractors (63.3%), Diesel Engines (6.9%), Electric Meters (25.3%) and (Agricultural Implements (11.2%).

The production was higher in case of Dairy Products (29.0%), Wheat Milling (6.4%), Soft Drinks & Juices (14.9%), Cigarettes (47.2%), Woolen Textiles (13.7%), Footwear (8.0%), Steel Bars/ Angles (8.1%), Fabricated Metal Products/HMC (18.6%), Automobiles Cars/Trucks (5.4%), Motor Cycles (21.5%), Bicycles (7.2%), Electric Fans (13.2%), Air-Conditioners(7.8%) and Refrigerators/Deep Freezers (19.6%).

Employment May 2025 VS April 2025 and May 2024 (Table-5)

Total employment during May-2025 was almost same as April-2025 and 2.0 percent lower than May-2024.

Average Employment July-May 2024-25 VS July-May 2023-24 (Table-7)

Average monthly employment during the period of July-May (2024-25) was 0.1 percent higher than the corresponding period of the previous year.

Table 2: Production Volume of Selected Items Pertaining to Large-Scale Manufacturing Sector, May 2025 VS April 2025

Group/Items	No. of Units Covered in May: 2025	Weight with 2005-06 base	Unit of Quantity	Production		Index of Production in May: 2025 with Apr: 2025
				May: 2025	Apr: 2025	
I Food Drinks & Tobacco	910					
1 Vegetable Ghee/Cooking Oil	44	5.00	M.Tons	107645	105770	101.8
i) Vegetable Ghee	44		M.Tons	86520	84650	102.2
ii) Cooking Oil	18		M.Tons	21125	21120	100.0
2 Dairy Products	8	4.13				88.0
i) Process/UHT Milk		1.62	`000` Litres	42210	43283	97.5
ii) Milk Powder		0.87	M.Tons	1370	1567	87.4
iii) Cheese		0.01	M.Tons	765	802	95.4
iv) Butter/ Desi Ghee		0.33	M.Tons	411	592	69.4
v) Cream		1.04	M.Tons	1013	998	101.5
vi) Yoghurt		0.26	M.Tons	0		
3 Wheat Milling	776	1.25	M.Tons	904691	896637	100.9
4 Sugar	44	3.77	M.Tons	0	0	
5 Tea (Blended)	3	0.03	M.Tons	6545	6762	96.8
6 Starch & its Products	2	0.56	M.Tons	36713	37127	98.9
i) Starch			M.Tons	22675	23018	98.5
ii) Glucose			M.Tons	14038	14109	99.5
7 Soft Drinks & Juices	30	0.82	`000` Litres	286672	250209	114.6
i) 7-up Coca Cola etc.	17		`000` Litres	259883	229851	113.1
ii) Fruit Juices	16		`000` Litres	24952	18849	132.4
iii) Syrups & Squashes	2		`000` Litres	1837	1509	121.7
8 Cigarettes	3	0.59	M. Nos	1530	1532	99.9
II Textiles	312					
1 Cotton Textiles	285					
i) Cotton/M. M Blended Yarn	247	15.40	M.Tons	109214	109406	99.8
ii) Cloth/M. M Blended Cloth	48	10.20	000 Mtrs.	45329	45445	99.7
2 Woolen Textiles	21	0.52	M.Tons	778	777	100.1
i) Woolen Yarn	14		M.Tons	762	761	100.1
ii) Knitting Wool	3		M.Tons	0	0	
iii) Woolen & Worsted Cloth	14		M.Tons	16	16	100.0
iv) Carpets	5	0.77	000 Mtrs.	0	0	
3 Jute Textiles	6	0.28	M.Tons	3723	3694	100.8
i) Jute Sacking				2171	2164	100.3
ii) Jute Hessian				1182	1165	101.5
iii) Jute Twine				370	365	101.4
III Leather Rubber & Plastic Products	147					
1 Leather Tanning	106					
i) Upper Leather	95	0.49	000 Sq. Mtrs.	762	753	101.2
ii) Sole Leather	11		M.Tons	16	16	100.0
2 Footwear	41	0.90	000 Pairs	3146	3166	99.4
IV Ply Wood	6	0.44	000 Sq. Feet	600	610	98.4
V Paper & Paper Board	47	4.19	M.Tons	56165	55960	100.4
1 Paper				22602	19328	116.9
i) Writing			M.Tons	8431	8425	100.1
ii) Printing			M.Tons	6814	3702	184.1
iii) Packing & Others			M.Tons	7357	7201	102.2
2 Paper Board			M.Tons	33563	36632	91.6
VI Chemical & Petroleum Products	139					
1 Pharmaceuticals	36	1.15				101.0
i) Tablets	28	0.38	000 Nos.	299728	298584	100.4
ii) Liquids (Syrups & Drops)	27	0.48	000 Ltrs.	1614	1576	102.4
iii) Capsules	19	0.08	000 Nos.	55164	55101	100.1
iv) Injections	12	0.14	000 Nos.	13611	13769	98.9
v) Ointments	7	0.03	Kgs.	53200	53226	100.0
vi) Galenicals	6	0.04	000 Ltrs.	3	3	100.0
2 Basic Inorganic Chemicals/Acids	8	1.34		87543	81717	107.1
i) Caustic Soda	2		M.Tons	19253	18639	103.3
ii) Hydrochloric Acid	2		M.Tons	33427	32643	102.4
iii) Chlorine Liquids	2		M.Tons	1546	1416	109.2
iv) Soda Ash	2		M.Tons	32281	27986	115.3
v) Sulphuric Acid	5		M.Tons	1036	1033	100.3

Group/Items	No. of Units Covered in May: 2025	Weight with 2005-06 base	Unit of Quantity	Production		Index of Production in May: 2025 with Apr: 2025
				May: 2025	Apr: 2025	
3 Fertilizers	7	7.18	M.Tons	468721	467898	100.2
i) Urea	4		M.Tons	333875	329967	101.2
ii) Amm. Nitrate	1		M.Tons	69068	70500	98.0
iii) Amm. Sulphate	0		M.Tons	0	0	
iv) Super Phosphate	1		M.Tons	0	0	
v) Nitro Phosphate	1		M.Tons	65778	67431	97.5
4 Paints & Varnishes	12	0.65		9953	9974	99.8
i) Paints		0.01	M.Tons	7138	7148	99.9
			`000` Litres	2785	2796	99.6
ii) Varnishes		1.04	M.Tons	16	16	100.0
		0.26	`000` Litres	14	14	100.0
5 Tyres & Tubes	6	0.12	`000` Nos.	3549	3537	100.3
i) Cycle Tyres				405	401	101.0
ii) Automobile Tyres				497	495	100.4
iii) Cycle Tubes				612	608	100.7
iv) Automobile Tubes				2035	2033	100.1
6 Soap	62	0.07	M.Tons	21580	21557	100.1
i) Toilet Soap	7			3735	3729	100.2
ii) Washing Soap	62			17845	17828	100.1
7 Matches	2	0.00	M. Box * 40 Sticks	732	730	100.3
8 Synthetic Fibre	4	0.95	M.Tons	43567	43455	100.3
9 Petroleum Products	2	0.99	`000` Litres	546696	544498	100.4
i) Petrol (LPG)			`000` Litres	13925	15196	91.6
ii) J.P.			`000` Litres	42469	43537	97.5
iii) White Kerosene			`000` Litres	4943	2650	186.5
iv) H.S. Diesel			`000` Litres	180944	175453	103.1
v) Diesel Fuel			`000` Litres	732	210	348.6
vi) Furnace Fuel			`000` Litres	88001	93310	94.3
vii) Solvent Oil			`000` Litres	0	0	
viii) Lubricating Oil			`000` Litres	0	0	
ix) Bitumen 80/100			`000` Litres	16627	16150	103.0
x) Blown Bitumen Products			`000` Litres	0	0	
xi) Premium M.G.			`000` Litres	199055	197992	100.5
xii) Naphtha			`000` Litres	0	0	
VII Non-Metalic & Mineral	20					
1 Glass Sheets	9	0.19	M.Tons	24612	24545	100.3
2 Cement	11	3.91	M.Tons	1841838	1685463	109.3
VIII Engineering Products	449					
1 Steel Bars/ Angles	41	1.06	M.Tons	24613	24701	99.6
2 Fabricated Metal Products/HMC	1	0.53	M.Tons	14	15	93.3
3 Tractors	4	0.86	Nos.	800	980	81.6
4 Automobiles Cars/Trucks	1	1.65	Nos.	552	563	98.0
5 Diesel Engines	15	0.06	Nos.	128	123	104.1
6 Motor Cycles	17	0.13	Nos.	111815	112733	99.2
7 Bicycles	3	0.15	Nos.	14599	14485	100.8
8 Electric Fans	116	0.11	Nos.	262879	244826	107.4
i) Ceiling				168427	162845	103.4
ii) Pedestal				44230	39997	110.6
iii) Others				50222	41984	119.6
9 Electric Transformers	3	0.00	Nos.	1910	1713	111.5
10 Electric Motors	30	0.52	Nos.	1524	1480	103.0
11 Switch Gears	3	0.01	Nos.	566	430	131.6
12 Washing Machines	20	0.00	Nos.	35569	34837	102.1
13 Electric Meters	4	0.19	Nos.	153361	146249	104.9
14 Air-Conditioners	5	0.14	Nos.	8736	8025	108.9
15 Refrigerators/Deep Freezers	5	0.31	Nos.	50061	47178	106.1
16 Safety Razor Blades	1	0.14	Mill. Nos.	79	77	102.6
17 Agricultural Implements	151	0.38	Nos.	1090	1080	100.9
i) Chaff Cutter	54			680	675	100.7
ii) Sugarcane Machines	35			3	3	100.0
iii) Wheat Thrashers	30			62	60	103.3
iv) Others (Misc. Imp.)	43			345	342	100.9
18 Textiles Machinery	29	0.01		55	54	101.9
i) Power Looms	20		Nos.	51	50	102.0
ii) Bobbins	5		000 Nos.	0	0	
iii) Shuttles	6		000 Nos.	4	4	100.0
General Index	2030	72.14		165.8	164.4	100.9

Table 3: Production Volume of Selected Items Pertaining to Large-Scale Manufacturing Sector, May 2025 VS May 2024

Group/Items	No. of Units Covered in May: 2025	Weight with 2005-06 base	Unit of Quantity	Production		Index of Production in May: 2025 with May: 2024
				May: 2025	May: 2024	
I Food Drinks & Tobacco	910					
1 Vegetable Ghee/Cooking Oil	44	5.00	M.Tons	107645	108641	99.1
i) Vegetable Ghee	44		M.Tons	86520	87234	99.2
ii) Cooking Oil	18		M.Tons	21125	21407	98.7
2 Dairy Products	8	4.13				122.4
i) Process/UHT Milk		1.62	`000` Litres	42210	41822	100.9
ii) Milk Powder		0.87	M.Tons	1370	780	175.6
iii) Chees		0.01	M.Tons	765	787	97.2
iv) Butter/ Desi Ghee		0.33	M.Tons	411	383	107.3
v) Cream		1.04	M.Tons	1013	689	147.0
vi) Yoghurt		0.26	M.Tons	0	0	
3 Wheat Milling	776	1.25	M.Tons	904691	828185	109.2
4 Sugar	44	3.77	M.Tons	0	0	
5 Tea (Blended)	3	0.03	M.Tons	6545	6120	106.9
6 Starch & its Products	2	0.56	M.Tons	36713	36607	100.3
i) Starch			M.Tons	22675	22581	100.4
ii) Glucose			M.Tons	14038	14026	100.1
7 Soft Drinks & Juices	30	0.82	`000` Litres	286672	237358	120.8
i) 7-up Coca Cola etc.	17		`000` Litres	259883	210407	123.5
ii) Fruit Juices	16		`000` Litres	24952	25656	97.3
iii) Syrups & Squashes	2		`000` Litres	1837	1295	141.9
8 Cigarettes	3	0.59	M. Nos	1530	976	156.8
II Textiles	312					
1 Cotton Textiles	285					
i) Cotton/M. M Blended Yarn	247	15.40	M.Tons	109214	121921	89.6
ii) Cloth/M. M Blended Cloth	48	10.20	000 Mtrs.	45329	50340	90.0
2 Woolen Textiles	21	0.52	M.Tons	778	728	106.9
i) Woolen Yarn	14		M.Tons	762	768	99.2
ii) Knitting Wool			M.Tons	0	0	
iii) Woolen & Worsted Cloth	14		M.Tons	16	20	80.0
iv) Carpets	5	0.77	000 Mtrs.	0	0	
3 Jute Textiles	6	0.28	M.Tons	3723	4371	85.2
i) Jute Sacking				2171	2989	72.6
ii) Jute Hessian				1182	1063	111.2
iii) Jute Twine				370	319	116.0
III Leather Rubber & Plastic Products	147					
1 Leather Tanning	106					
i) Upper Leather	95	0.49	000 Sq. Mtrs.	762	768	99.2
ii) Sole Leather	11		M.Tons	16	16	100.0
2 Footwear	41	0.90	000 Pairs	3146	3035	103.7
IV Ply Wood	6	0.44	000 Sq. Feet	600	589	101.9
V Paper & Paper Board	47	4.19	M.Tons	56165	57239	98.1
1 Paper				22602	20765	108.8
i) Writing			M.Tons	8431	10076	83.7
ii) Printing			M.Tons	6814	4648	146.6
iii) Packing & Others			M.Tons	7357	6041	121.8
2 Paper Board			M.Tons	33563	36474	92.0
VI Chemical & Petroleum Products	139					
1 Pharmaceuticals	36	1.15				99.4
i) Tablets	28	0.38	000 Nos.	299728	298875	100.3
ii) Liquids (Syrups & Drops)	27	0.48	000 Ltrs.	1614	1780	90.7
iii) Capsules	19	0.08	000 Nos.	55164	45717	120.7
iv) Injections	12	0.14	000 Nos.	13611	14017	97.1
v) Ointments	7	0.03	Kgs.	53200	46328	114.8
vi) Galenicals	6	0.04	000 Ltrs.	3	2	150.0
2 Basic Inorganic Chemicals/Acids	8	1.34		87543	103333	84.7
i) Caustic Soda	2		M.Tons	19253	31030	62.0
ii) Hydrochloric Acid	2		M.Tons	33427	41031	81.5
iii) Chlorine Liquids	2		M.Tons	1546	1203	128.5
iv) Soda Ash	2		M.Tons	32281	28654	112.7
v) Sulphuric Acid	5		M.Tons	1036	1415	73.2

Group/Items	No. of Units Covered in May: 2025	Weight with 2005-06 base	Unit of Quantity	Production		Index of Production in May: 2025 with May: 2024
				May: 2025	May: 2024	
3 Fertilizers	7	7.18	M.Tons	468721	438288	106.9
i) Urea	4		M.Tons	333875	294507	113.4
ii) Amm. Nitrate	1		M.Tons	69068	74520	92.7
iii) Amm. Sulphate	0		M.Tons	0	0	
iv) Super Phosphate	1		M.Tons	0	0	
v) Nitro Phosphate	1		M.Tons	65778	69261	95.0
4 Paints & Varnishes	12	0.65		9953	11429	87.1
i) Paints		0.01	M.Tons	7138	7781	91.7
			`000` Litres	2785	3618	77.0
ii) Varnishes		1.04	M.Tons	16	16	100.0
		0.26	`000` Litres	14	14	100.0
5 Tyres & Tubes	6	0.12	`000` Nos.	3549	3436	103.3
i) Cycle Tyres				405	371	109.2
ii) Automobile Tyres				497	485	102.5
iii) Cycle Tubes				612	576	106.3
iv) Automobile Tubes				2035	2004	101.5
6 Soap	62	0.07	M.Tons	21580	22097	97.7
i) Toilet Soap	7			3735	3856	96.9
ii) Washing Soap	62			17845	18241	97.8
7 Matches	2	0.00	M. Box * 40 Sticks	732	674	108.6
8 Synthetic Fibre	4	0.95	M.Tons	43567	42656	102.1
9 Petroleum Products	2	0.99	`000` Litres	546696	522888	104.6
i) Petrol (LPG)			`000` Litres	13925	14946	93.2
ii) J.P.			`000` Litres	42469	47336	89.7
iii) White Kerosene			`000` Litres	4943	4501	109.8
iv) H.S. Diesel			`000` Litres	180944	193421	93.5
v) Diesel Fuel			`000` Litres	732	0	
vi) Furnace Fuel			`000` Litres	88001	98730	89.1
vii) Solvent Oil			`000` Litres	0	0	
viii) Lubricating Oil			`000` Litres	0	0	
ix) Bitumen 80/100			`000` Litres	16627	9490	175.2
x) Blown Bitumen Products			`000` Litres	0	0	
xi) Premium M.G.			`000` Litres	199055	154464	128.9
xii) Naphtha			`000` Litres	0	0	
VII Non-Metallic & Mineral	20					
1 Glass Sheets	9	0.19	M.Tons	24612	24600	100.0
2 Cement	11	3.91	M.Tons	1841838	1677744	109.8
VIII Engineering Products	449					
1 Steel Bars/ Angles	41	1.06	M.Tons	24613	23008	107.0
2 Fabricated Metal Products/HMC	1	0.53	M.Tons	14	13	107.7
3 Tractors	4	0.86	Nos.	800	3458	23.1
4 Automobiles Cars/Trucks	1	1.65	Nos.	552	609	90.6
5 Diesel Engines	15	0.06	Nos.	128	128	100.0
6 Motor Cycles	17	0.13	Nos.	111815	89578	124.8
7 Bicycles	3	0.15	Nos.	14599	13802	105.8
8 Electric Fans	116	0.11	Nos.	262879	231587	113.5
i) Ceiling				168427	127854	131.7
ii) Pedestal				44230	38547	114.7
iii) Others				50222	65186	77.0
9 Electric Transformers	3	0.00	Nos.	1910	1720	111.0
10 Electric Motors	30	0.52	Nos.	1524	1385	110.0
11 Switch Gears	3	0.01	Nos.	566	754	75.1
12 Washing Machines	20	0.00	Nos.	35569	33002	107.8
13 Electric Meters	4	0.19	Nos.	153361	168547	91.0
14 Air-Conditioners	5	0.14	Nos.	8736	8425	103.7
15 Refrigerators/Deep Freezers	5	0.31	Nos.	50061	37676	132.9
16 Safety Razor Blades	1	0.14	Mill. Nos.	79	79	100.0
17 Agricultural Implements	151	0.38	Nos.	1090	1130	96.5
i) Chaff Cutter	54			680	671	101.3
ii) Sugarcane Machines	35			3	2	150.0
iii) Wheat Thrashers	30			62	40	155.0
iv) Others (Misc. Imp.)	43			345	417	82.7
18 Textiles Machinery	29	0.01		55	54	101.9
i) Power Looms	20		Nos.	51	51	100.0
ii) Bobbins	5		000 Nos.	0	0	
iii) Shuttles	6		000 Nos.	4	3	133.3
General Index	2030	72.14		165.8	161.8	102.5

Table 4:		Production Volume of Selected Items Pertaining to Large-Scale Manufacturing Sector, 2024-25 (Jul-May) VS 2023-24 (Jul-May)					
Group/Items		No. of Units Covered in May: 2025	Weight with 2005-06 base	Unit of Quantity	Production		Index of Production in 2024-25 (Jul-May)with 2023-24 (Jul-May)=100
					2024-25 (Jul-May)	2023-24 (Jul-May)	
I	Food Drinks & Tobacco	910					
1	Vegetable Ghee/Cooking Oil	44	5.00	M.Tons	1152218	1140754	101.0
	i) Vegetable Ghee	44		M.Tons	920365	921200	99.9
	ii) Cooking Oil	18		M.Tons	231853	219554	105.6
2	Dairy Products	8	4.13				129.0
	i) Process/UHT Milk		1.62	`000` Litres	477805	447972	106.7
	ii) Milk Powder		0.87	M.Tons	13140	5785	227.1
	iii) Chees		0.01	M.Tons	8992	3921	229.3
	iv) Butter/ Desi Ghee		0.33	M.Tons	3747	3852	97.3
	v) Cream		1.04	M.Tons	8118	6596	123.1
	vi) Yoghurt		0.26	M.Tons	0	0	
3	Wheat Milling	776	1.25	M.Tons	9491929	8919621	106.4
4	Sugar	44	3.77	M.Tons	4681455	5104124	91.7
5	Tea (Blended)	3	0.03	M.Tons	81408	84427	96.4
6	Starch & its Products	2	0.56	M.Tons	403870	402539	100.3
	i) Starch			M.Tons	248056	247660	100.2
	ii) Glucose			M.Tons	155814	154879	100.6
7	Soft Drinks & Juices	30	0.82	`000` Litres	2361104	2054368	114.9
	i) 7-up Coca Cola etc.	17		`000` Litres	2147400	1846884	116.3
	ii) Fruit Juices	16		`000` Litres	189322	187656	100.9
	iii) Syrups & Squashes	2		`000` Litres	24382	19828	123.0
8	Cigarettes	3	0.59	M. Nos	14858	10094	147.2
II	Textiles	312					
1	Cotton Textiles	285					
	i) Cotton/M. M Blended Yarn	247	15.40	M.Tons	1246565	1366465	91.2
	ii) Cloth/M. M Blended Cloth	48	10.20	000 Mtrs.	515799	617739	83.5
2	Woolen Textiles	21	0.52	M.Tons	8528	7500	113.7
	i) Woolen Yarn	14		M.Tons	8346	7325	113.9
	ii) Knitting Wool			M.Tons	0	0	
	iii) Woolen & Worsted Cloth	14		M.Tons	182	235	77.4
	iv) Carpets	5	0.77	000 Mtrs.	0	0	
3	Jute Textiles	6	0.28	M.Tons	40869	51619	79.2
	i) Jute Sacking				24326	34526	70.5
	ii) Jute Hessian				12683	12083	105.0
	iii) Jute Twine				3860	5010	77.0
III	Leather Rubber & Plastic Products	147					
1	Leather Tanning	106					
	i) Upper Leather	95	0.49	000 Sq. Mtrs.	8503	8478	100.3
	ii) Sole Leather	11		M.Tons	176	179	98.3
2	Footwear	41	0.90	000 Pairs	34724	32157	108.0
IV	Ply Wood	6	0.44	000 Sq. Feet	6683	6611	101.1
V	Paper & Paper Board	47	4.19	M.Tons	625733	614947	101.8
1	Paper				225110	226527	99.4
	i) Writing			M.Tons	100307	100591	99.7
	ii) Printing			M.Tons	56194	59032	95.2
	iii) Packing & Others			M.Tons	68609	66904	102.5
2	Paper Board			M.Tons	400623	388420	103.1
VI	Chemical & Petroleum Products	139					
1	Pharmaceuticals	36	1.15				99.2
	i) Tablets	28	0.38	000 Nos.	3403912	3245408	104.9
	ii) Liquids (Syrups & Drops)	27	0.48	000 Ltrs.	18427	20355	90.5
	iii) Capsules	19	0.08	000 Nos.	604190	515421	117.2
	iv) Injections	12	0.14	000 Nos.	155919	161357	96.6
	v) Ointments	7	0.03	Kgs.	542341	567456	95.6
	vi) Galenicals	6	0.04	000 Ltrs.	31	25	124.0
2	Basic Inorganic Chemicals/Acids	8	1.34		1079277	1044762	103.3
	i) Caustic Soda	2		M.Tons	291008	263385	110.5
	ii) Hydrochloric Acid	2		M.Tons	420947	468762	89.8
	iii) Chlorine Liquids	2		M.Tons	15536	16090	96.6
	iv) Soda Ash	2		M.Tons	338448	271839	124.5
	v) Sulphuric Acid	5		M.Tons	13338	24686	54.0

Group/Items	No. of Units Covered in May: 2025	Weight with 2005-06 base	Unit of Quantity	Production		Index of Production in 2024-25 (Jul-May) with 2023-24 (Jul-May)=100
				2024-25 (Jul-May)	2023-24 (Jul-May)	
3 Fertilizers	7	7.18	M.Tons	4902739	4920828	99.6
i) Urea	4		M.Tons	3429385	3354589	102.2
ii) Amm. Nitrate	1		M.Tons	765918	819231	93.5
iii) Amm. Sulphate	0		M.Tons	0	0	
iv) Super Phosphate	1		M.Tons	42	4007	1.0
v) Nitro Phosphate	1		M.Tons	707394	747008	94.7
4 Paints & Varnishes	12	0.65		108758	116877	93.1
i) Paints		0.01	M.Tons	77919	79863	97.6
			`000` Litres	30509	36691	83.2
ii) Varnishes		1.04	M.Tons	176	176	100.0
		0.26	`000` Litres	154	147	104.8
5 Tyres & Tubes	6	0.12	`000` Nos.	38482	36672	104.9
i) Cycle Tyres				4284	3913	109.5
ii) Automobile Tyres				5406	5151	105.0
iii) Cycle Tubes				6560	6224	105.4
iv) Automobile Tubes				22232	21384	104.0
6 Soap	62	0.07	M.Tons	237432	232695	102.0
i) Toilet Soap	7			41510	38961	106.5
ii) Washing Soap	62			195922	193734	101.1
7 Matches	2	0.00	M. Box * 40 Sticks	7692	7092	108.5
8 Synthetic Fibre	4	0.95	M.Tons	480811	474108	101.4
9 Petroleum Products	2	0.99	`000` Litres	5641904	6198361	91.0
i) Petrol (LPG)			`000` Litres	159049	149692	106.3
ii) J.P.			`000` Litres	509282	489150	104.1
iii) White Kerosene			`000` Litres	53422	29912	178.6
iv) H.S. Diesel			`000` Litres	1983123	2426013	81.7
v) Diesel Fuel			`000` Litres	7195	0	
vi) Furnace Fuel			`000` Litres	945614	1167879	81.0
vii) Solvent Oil			`000` Litres	0	0	
viii) Lubricating Oil			`000` Litres	0	0	
ix) Bitumen 80/100			`000` Litres	143796	112812	127.5
x) Blown Bitumen Products			`000` Litres	0	0	
xi) Premium M.G.			`000` Litres	1840423	1822903	101.0
xii) Naphtha			`000` Litres	0	0	
VII Non-Metalic & Mineral	20					
1 Glass Sheets	9	0.19	M.Tons	272137	276716	98.3
2 Cement	11	3.91	M.Tons	18784789	18729614	100.3
VIII Engineering Products	449					
1 Steel Bars/ Angles	41	1.06	M.Tons	265970	246144	108.1
2 Fabricated Metal Products/HMC	1	0.53	M.Tons	185	156	118.6
3 Tractors	4	0.86	Nos.	13951	37982	36.7
4 Automobiles Cars/Trucks	1	1.65	Nos.	6455	6127	105.4
5 Diesel Engines	15	0.06	Nos.	1326	1424	93.1
6 Motor Cycles	17	0.13	Nos.	1167353	960917	121.5
7 Bicycles	3	0.15	Nos.	155603	145200	107.2
8 Electric Fans	116	0.11	Nos.	2280051	2013650	113.2
i) Ceiling				1506132	1152585	130.7
ii) Pedestal				304054	309292	98.3
iii) Others				469865	551773	85.2
9 Electric Transformers	3	0.00	Nos.	16227	21040	77.1
10 Electric Motors	30	0.52	Nos.	15109	15149	99.7
11 Switch Gears	3	0.01	Nos.	8738	9390	93.1
12 Washing Machines	20	0.00	Nos.	375340	346189	108.4
13 Electric Meters	4	0.19	Nos.	1479997	1982037	74.7
14 Air-Conditioners	5	0.14	Nos.	72010	66816	107.8
15 Refrigerators/Deep Freezers	5	0.31	Nos.	434948	363518	119.6
16 Safety Razor Blades	1	0.14	Mill. Nos.	954	980	97.3
17 Agricultural Implements	151	0.38	Nos.	11893	13392	88.8
i) Chaff Cutter	54			7415	7635	97.1
ii) Sugarcane Machines	35			31	28	110.7
iii) Wheat Thrashers	30			669	563	118.8
iv) Others (Misc. Imp.)	43			3778	5166	73.1
18 Textiles Machinery	29	0.01		639	607	105.3
i) Power Looms	20		Nos.	600	565	106.2
ii) Bobbins	5		000 Nos.	0	0	
iii) Shuttles	6		000 Nos.	39	42	92.9
General Index*	2030	72.14		174.8	176.9	98.8

* Average Index over eight months.

Table 5: Total Employment Regarding Large-Scale Industries, April-2025, May-2025 and May-2024

Groups/Items		No. of Units Covered in Apr: 2025	Apr: 2025	May: 2025	May: 2024	Index of Employment	
						May 2025 with Apr: 2025	May: 2025 with Apr: 2024
I	Food Drinks & Tobacco	910					
1	Vegetable Ghee/Cooking Oil	44	5830	5836	5945	100.1	98.2
2	Dairy Products	8	2059	2059	2059	100.0	100.0
3	Wheat Milling	776	9819	9840	9715	100.2	101.3
4	Sugar	44	27504	27699	30216	100.7	91.7
5	Tea (Blended)	3	1531	1558	1244	101.8	125.2
6	Starch & its Products	2	1823	1809	1813	99.2	99.8
7	Soft Drinks & Juices	30	11643	11603	11544	99.7	100.5
8	Cigarettes	3	655	655	624	100.0	105.0
II	Textiles	313					
1	Cotton Textiles	285	140775	140645	143612	99.9	97.9
2	Woolen Textiles	21	938	938	925	100.0	101.4
3	Jute Textiles	7	4332	4340	4754	100.2	91.3
III	Leather Rubber & Plastic Products	147					
1	Leather Tanning	106	2229	2231	2313	100.1	96.5
2	Footwear	41	12780	12772	12790	99.9	99.9
IV	Plywood	6	80	80	76	100.0	105.3
V	Paper & Paper Board	47					
1	Paper & Paper Board	47	4813	4799	5056	99.7	94.9
VI	Chemicals & Petroleum Products	139					
1	Pharmaceuticals	36	8104	8105	8072	100.0	100.4
2	Basic Inorganic Chemicals	8	2257	2257	2244	100.0	100.6
3	Fertilizers	7	5540	5542	5515	100.0	100.5
4	Paints & Varnishes	12	2454	2456	2431	100.1	101.0
5	Tyres & Tubes	6	1422	1435	1386	100.9	103.5
6	Soap	62	3007	3009	3014	100.1	99.8
7	Matches	2	483	483	517	100.0	93.4
8	Synthetic Fibre	4	1779	1779	1763	100.0	100.9
9	Petroleum Products	2	998	998	978	100.0	102.0
VII	Non-Metallic & Mineral Products	20					
1	Glass Sheets	9	1065	1068	1078	100.3	99.1
2	Cement	11	7422	7425	7436	100.0	99.9
VIII	Engineering Products	448					
1	Steel Bars/ Angles	40	1112	1113	1094	100.1	101.7
2	Fabricated Metal Products/HMC	1	14	14	14	100.0	100.0
3	Tractors	4	440	438	465	99.5	94.2
4	Automobile Cars/Trucks	1	685	685	699	100.0	98.0
5	Diesel Engines	15	23	23	23	100.0	100.0
6	Motor Cycles	17	3262	3260	3232	99.9	100.9
7	Bicycles	3	686	686	686	100.0	100.0
8	Electric Fans	116	2295	2298	2240	100.1	102.6
9	Electric Transformers	3	2680	2680	2680	100.0	100.0
10	Electric Motors	30	165	166	160	100.6	103.8
11	Electric Meters	4	1200	1200	1200	100.0	100.0
12	Switch Gears	3	12	12	12	100.0	100.0
13	Washing Machines	20	285	286	273	100.4	104.8
15	Air-Conditioners/Refrigerators/Deep Fre	10	2153	2153	2153	100.0	100.0
16	Safety Razor Blades	1	675	675	692	100.0	97.5
17	Agricultural Implements	151	488	488	490	100.0	99.6
18	Textiles Machinery	29	70	70	68	100.0	102.9
Total		2030	277587	277668	283301	100.0	98.0

Table 6: Total Number of Production Workers Regarding Large-Scale Industries, April-2025, May-2025 and May-2024

Groups/Items	No. of Units Covered in May: 2025	Apr: 2025	May: 2025	May: 2024	Index of Employment	
					May: 2025 with Apr: 2025	May: 2025 with Apr: 2024
I Food Drinks & Tobacco	910					
1 Vegetable Ghee/Cooking Oil	44	3712	3721	3718	100.2	100.1
2 Dairy Products	8	1319	1316	1574	99.8	83.6
3 Wheat Milling	776	6223	6232	6034	100.1	103.3
4 Sugar	44	19845	19625	20569	98.9	95.4
5 Tea (Blended)	3	1159	1151	958	99.3	120.1
6 Starch & its Products	2	1640	1638	1612	99.9	101.6
7 Soft Drinks & Juices	30	7601	7610	7731	100.1	98.4
8 Cigarettes	3	420	420	393	100.0	106.9
II Textiles	313					
1 Cotton Textiles	285	116587	115684	121585	99.2	95.1
2 Woolen Textiles	21	733	733	721	100.0	101.7
3 Jute Textiles	7	3915	3965	4387	101.3	90.4
III Leather Rubber & Plastic Products	147					
1 Leather Tanning	106	1564	1566	1650	100.1	94.9
2 Footwear	41	9335	9328	9332	99.9	100.0
IV Plywood	6	72	72	72	100.0	100.0
V Paper & Paper Board	47					
1 Paper & Paper Board	47	3534	3524	3650	99.7	96.5
VI Chemicals & Petroleum Products	139					
1 Pharmaceuticals	36	3316	3315	3276	100.0	101.2
2 Basic Inorganic Chemicals	8	1400	1400	1391	100.0	100.6
3 Fertilizers	7	3492	3493	3480	100.0	100.4
4 Paints & Varnishes	12	1544	1546	1509	100.1	102.5
5 Tyres & Tubes	6	1108	1117	1073	100.8	104.1
6 Soap	62	2369	2371	2394	100.1	99.0
7 Matches	2	431	431	475	100.0	90.7
8 Synthetic Fibre	4	1470	1470	1473	100.0	99.8
9 Petroleum Products	2	555	555	541	100.0	102.6
VII Non-Metalic & Mineral Products	20					
1 Glass Sheets	9	775	778	801	100.4	97.1
2 Cement	11	4356	4345	4262	99.7	101.9
VIII Engineering Products	448					
1 Steel Bars/ Angles	40	804	805	791	100.1	101.8
2 Fabricated Metal Products/HMC	1	11	11	11	100.0	100.0
3 Tractors	4	300	298	334	99.3	89.2
4 Automobile Cars/Trucks	1	465	465	471	100.0	98.7
5 Diesel Engines	15	16	16	16	100.0	100.0
6 Motor Cycles	17	2418	2416	2404	99.9	100.5
7 Bicycles	3	527	527	527	100.0	100.0
8 Electric Fans	116	1840	1842	1798	100.1	102.4
9 Electric Transformers	3	1980	1980	1980	100.0	100.0
10 Electric Motors	30	135	136	134	100.7	101.5
11 Electric Meters	4	955	955	955	100.0	100.0
12 Switch Gears	3	10	10	10	100.0	100.0
13 Washing Machines	20	204	205	191	100.5	107.3
15 Air-Conditioners/Refrigerators/Deep Fre	10	1845	1845	1845	100.0	100.0
16 Safety Razor Blades	1	540	542	548	100.4	98.9
17 Agricultural Implements	151	356	356	356	100.0	100.0
18 Textiles Machinery	29	60	60	59	100.0	101.7
Total	2030	210941	209875	217091	99.5	96.7

Table 7: Average Monthly Total Employment Regarding Large-Scale Industries, 2024-25 (Jul-May): VS 2023-24 (Jul-May):

Groups/Items		No. of Units Covered in May: 2025	2024-25 (Jul-May):	2023-24 (Jul-May):	2024-25 (Jul-May) with 2023-24 (Jul-May):
I	Food Drinks & Tobacco	910			
1	Vegetable Ghee/Cooking Oil	44	5851	5834	100.3
2	Dairy Products	8	2068	2115	97.8
3	Wheat Milling	776	9745	9796	99.5
4	Sugar	44	30420	29287	103.9
5	Tea (Blended)	3	1615	1339	120.5
6	Starch & its Products	2	1815	1816	99.9
7	Soft Drinks & Juices	30	11478	9044	126.9
8	Cigarettes	3	647	597	108.3
II	Textiles	313			
1	Cotton Textiles	285	141389	144914	97.6
2	Woolen Textiles	21	936	914	102.4
3	Jute Textiles	7	4367	4760	91.7
III	Leather Rubber & Plastic Products	147			
1	Leather Tanning	106	2314	2313	100.0
2	Footwear	41	12803	12637	101.3
IV	Plywood	6	81	86	93.8
V	Paper & Paper Board	47			
1	Paper & Paper Board	47	4891	5128	95.4
VI	Chemicals & Petroleum Products	139			
1	Pharmaceuticals	36	8098	8059	100.5
2	Basic Inorganic Chemicals	8	2264	2226	101.7
3	Fertilizers	7	5528	5468	101.1
4	Paints & Varnishes	12	2442	2389	102.2
5	Tyres & Tubes	6	1413	1369	103.2
6	Soap	62	3013	3009	100.1
7	Matches	2	483	507	95.4
8	Synthetic Fibre	4	1780	1767	100.8
9	Petroleum Products	2	995	1001	99.4
VII	Non-Metallic & Mineral Products	20			
1	Glass Sheets	9	1075	1103	97.5
2	Cement	11	7456	7346	101.5
VIII	Engineering Products	448			
1	Steel Bars/ Angles	40	1110	1084	102.4
2	Fabricated Metal Products/HMC	1	14	15	91.7
3	Tractors	4	442	460	96.2
4	Automobile Cars/Trucks	1	690	694	99.4
5	Diesel Engines	15	23	24	97.3
6	Motor Cycles	17	3254	3212	101.3
7	Bicycles	3	686	686	100.0
8	Electric Fans	116	2242	2151	104.3
9	Electric Transformers	3	2680	2680	100.0
10	Electric Motors	30	163	161	100.7
11	Electric Meters	4	1200	1200	100.0
12	Switch Gears	3	12	12	100.0
13	Washing Machines	20	281	267	105.0
15	Air-Conditioners/Refrigerators/Deep Freezers	10	2153	2153	100.0
16	Safety Razor Blades	1	689	692	99.5
17	Agricultural Implements	151	485	506	95.9
18	Textiles Machinery	29	70	69	101.2
Total		2030	281159	280892	100.1

Table 8: Average Monthly Number of Production Workers Regarding Large-Scale Industries, 2024-25 (Jul-May): VS 2023-24 (Jul-May):

Groups/Items		No. of Units Covered in Apr: 2025	2024-25 (Jul-May):	2023-24 (Jul-May):	2024-25 (Jul-May) with 2023-24 (Jul-May):
I	Food Drinks & Tobacco	910			
1	Vegetable Ghee/Cooking Oil	44	3717	3694	100.6
2	Dairy Products	8	1315	1402	93.8
3	Wheat Milling	776	6093	6038	100.9
4	Sugar	44	21383	21362	100.1
5	Tea (Blended)	3	1209	1008	120.0
6	Starch & its Products	2	1621	1628	99.6
7	Soft Drinks & Juices	30	7703	5216	147.7
8	Cigarettes	3	412	356	115.8
II	Textiles	313			
1	Cotton Textiles	285	117383	122103	96.1
2	Woolen Textiles	21	730	714	102.3
3	Jute Textiles	7	4027	4386	91.8
III	Leather Rubber & Plastic Products	147			
1	Leather Tanning	106	1661	1638	101.4
2	Footwear	41	9351	9361	99.9
IV	Plywood	6	74	73	101.9
V	Paper & Paper Board	47			
1	Paper & Paper Board	47	3514	3697	95.0
VI	Chemicals & Petroleum Products	139			
1	Pharmaceuticals	36	3315	3290	100.7
2	Basic Inorganic Chemicals	8	1403	1379	101.7
3	Fertilizers	7	3484	3438	101.4
4	Paints & Varnishes	12	1531	1402	109.2
5	Tyres & Tubes	6	1094	1059	103.2
6	Soap	62	2378	2418	98.3
7	Matches	2	434	466	93.1
8	Synthetic Fibre	4	1479	1472	100.5
9	Petroleum Products	2	550	564	97.4
VII	Non-Metallic & Mineral Products	20			
1	Glass Sheets	9	794	818	97.1
2	Cement	11	4347	4343	100.1
VIII	Engineering Products	448			
1	Steel Bars/ Angles	40	803	782	102.7
2	Fabricated Metal Products/HMC	1	11	11	100.0
3	Tractors	4	307	328	93.5
4	Automobile Cars/Trucks	1	469	465	101.0
5	Diesel Engines	15	16	16	100.0
6	Motor Cycles	17	2413	2403	100.4
7	Bicycles	3	527	570	92.4
8	Electric Fans	116	1798	1726	104.2
9	Electric Transformers	3	1980	1980	100.0
10	Electric Motors	30	134	135	98.9
11	Electric Meters	4	955	955	100.0
12	Switch Gears	3	10	10	100.0
13	Washing Machines	20	200	189	105.7
15	Air-Conditioners/Refrigerators/Deep Freezers	10	1845	1845	100.0
16	Safety Razor Blades	1	547	548	99.8
17	Agricultural Implements	151	351	356	98.7
18	Textiles Machinery	29	60	60	100.9
Total		2030	213427	215705	98.9

PERFORMANCE OF COTTON TEXTILE INDUSTRY

Report for the month of May 2025

Coverage

This report covers Two Hundred & Eighty Five (285) Cotton Textiles Mills, Producing yarn and cloth.

Spindles/Rotors/Looms	Installed	Average Worked	% Utilization
Spindles	828012	628101	75.9%
Rotors	52561	35321	67.2%
Looms	7911	5905	74.6%

MANUFACTURING ACTIVITY (MAY 2025)

Production, Consumption and Stock of Cotton Bales

Textile mills purchased 728736 Bales of Cotton during the month, which is 0.1% higher April 2025. These mills consumed 660116 of Cotton Bales to manufacture Yarn that is 0.1% lower than the last month. The stock of Cotton Bales at the end of the month was 5315290 Bales.

Production, Consumption and Sale of Cotton Yarn

The production of Cotton Yarn during the month was 73758 thousand kgs. Which is 0.2% lower than the last month. The mills consumed 8442 thousand kgs. Of Cotton Yarn to manufacture Cotton Cloth, during the month 72829 thousand kgs. Of Cotton Yarn was sold by the textile mills which was 2.0% higher than the April 2025. The Export of Cotton Yarn during the month was 10926 thousand kgs. Which was 7.2% higher than the last month.

Production and Sale of Cotton Cloth

The production of Cotton Cloth during the month was 39555 thousand Metres. Which is 0.2% lower than the last month, 42227 thousand Metres. Of Cotton Cloth was sold 10452 thousand Metres was exported by the Textile Mills during the month which was 0.8% lower then the last month.

Production of Man Made/Blended Yarn and Made/Blended Cloth

The production of Man Made/Blended Yarn was 35456 thousand kgs. which is 0.2% lower than the last month. The production of Man Made/Blended Cloth was 5774 thousand Mtrs. which was 0.4% lower the last month.

Employment and Wages/Salaries

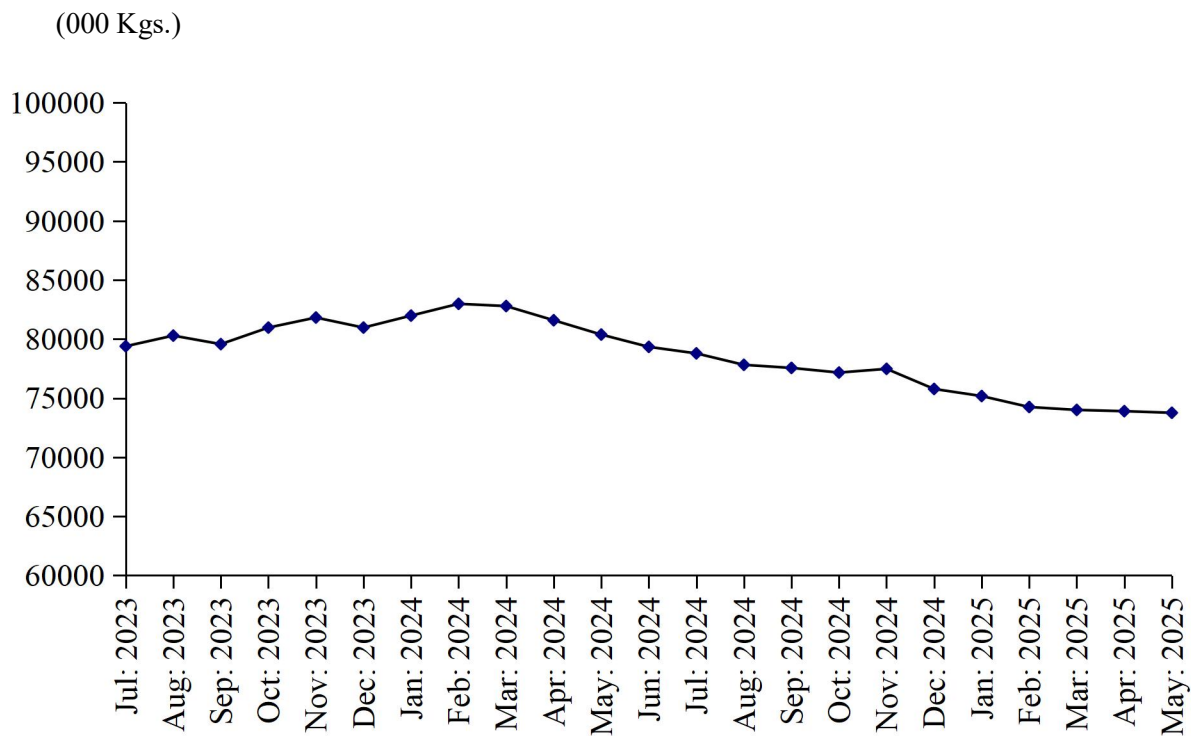
Total employment during the month was 140645 Out of this total employment, 116484 were production workers. Total wages/salaries for the month amounted to 3323.5 Million Rupees.

Production of Man Made/Blended Yarn and Cloth (Since July 2024)

Month/Year	Man Made / Blended Yarn (000 Kgs.)		Man Made / Blended Cloth (000.Mtrs.)	
	2023-24	2024-25	2023-24	2024-25
<u>Jul:- May:</u>	<u>473782</u>	<u>409974</u>	<u>72218</u>	<u>68441</u>
July	42910	39567	6851	6383
August	43270	38648	4940	6261
September	42685	38746	6876	7027
October	43399	38350	6888	6855
November	42399	37943	6800	6789
December	43409	37502	6789	5900
January	43594	36497	6700	5890
February	43310	35745	6789	5950
March	42521	35610	6500	5812
April	44739	35512	6586	5800
May	41546	35456	6499	5774
June	39847		6412	

PRODUCTION OF COTTON YARN

July 2023 to May 2025



PRODUCTION OF COTTON CLOTH

July 2023 to May 2025

(000 Linear Mtrs.)

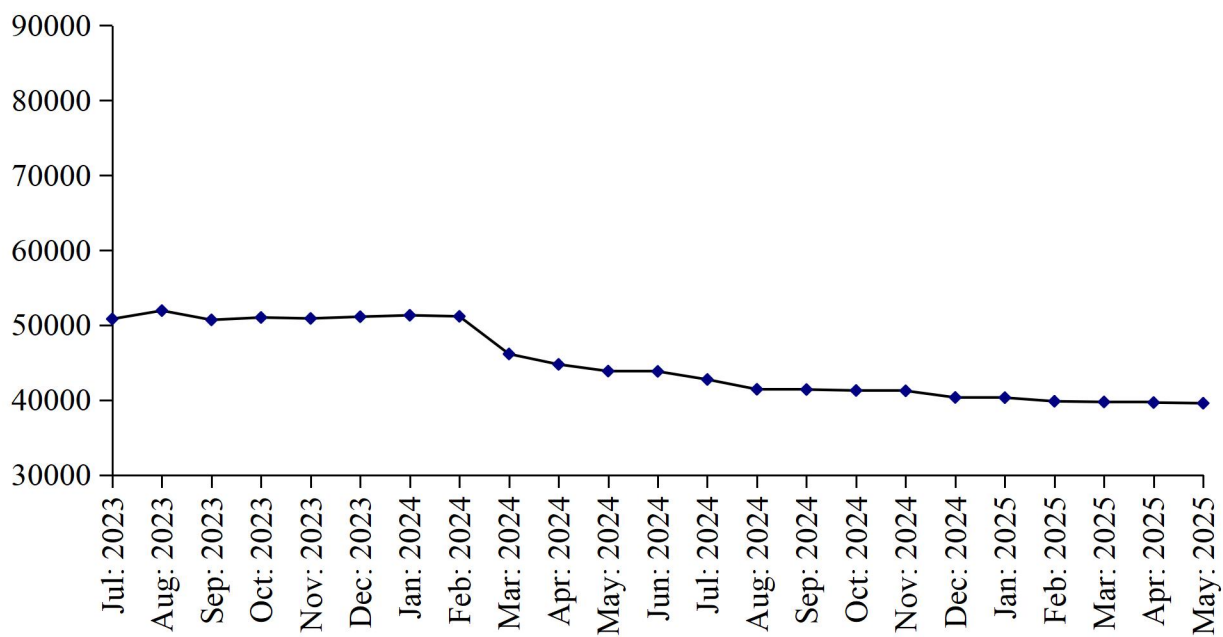


TABLE 10: DETAIL OF THE PURCHASE, SALE, CONSUMPTION AND STOCK OF COTTON BALES.

(one Bale = 170 Kg)

Year (July-June)/ Month	No. Of Reporting Mills	Purchase	Sale	Consumed for Spinning	Stock at the end of Year/Month
2008-09	268	7284896	483579	7100353	1679079
2009-10	268	8143340	505951	7889680	1426788
2010-11	274	8801855	484794	8596317	1147532
2011-12	274	8025974	387146	7286551	1499809
2012-13	277	8618084	326690	7863746	1927457
2013-14	277	8301002	434565	7838753	1955141
2014-15	277	8281619	550118	7819131	1867511
2015-16	290	7263140	330272	7085902	1714477
2016-17	290	8271104	587127	7802375	1596079
2017-18	299	8157127	412752	7459759	1880695
2018-19	299	8156763	448409	7552656	2036393
2019-20	299	6953009	399666	6319497	2270239
2020-21	285	8478928	314792	7320669	3113706
2021-22	285	11846884	1594595	9431481	3934514
2022-23	285	11142140	247639	10794841	4034174
2023-24	285	10508376	98183	9531211	4913156
(Jul: - May:)	<u>285</u>	<u>9801357</u>	<u>75854</u>	<u>8830536</u>	<u>4929141</u>
Jul:	285	891087	8169	875325	4041767
Aug:	285	992290	6570	869758	4157729
Sep:	285	992300	6590	870629	4272810
Oct:	285	988300	6531	879843	4374736
Nov:	285	995428	6653	979810	4383701
Dec:	285	974759	6904	858581	4492975
Jan:	285	946869	5721	848014	4586109
Feb:	285	855831	6904	738082	4696954
Mar:	285	786831	7104	682268	4794413
Apr:	285	741831	7304	630859	4898081
May:	285	635831	7404	597367	4929141
June:	285	707019	22329	700675	4913156
<u>2024-25</u>					
(Jul: –May:)	<u>285</u>	<u>8067949</u>	<u>213625</u>	<u>7452190</u>	<u>5315290</u>
Jul:	285	624151	18533	683820	4834954
Aug:	285	841212	56468	645999	4973699
Sep:	285	820817	20577	671896	5102043
Oct:	285	721942	19496	692077	5112412
Nov:	285	724543	14494	692863	5129598
Dec:	285	712145	14204	683461	5144078
Jan:	285	724543	12907	686124	5169590
Feb:	285	717541	12409	688530	5186192
Mar:	285	724543	11107	686395	5213233
Apr:	285	727776	11715	660909	5268385
May:	285	728736	21715	660116	5315290

TABLE 11: PRODUCTION, PURCHASE, CONSUMPTION, SALE AND STOCK OF COTTON YARN

(000 Kgs)

Year (July-June)/ Month	No. of Reporting Mills	Production	Purchase	Consumed	SALE			Stock at the end of Year/ Month
					Total	Within Country	Exported	
2008-09	263	744478	138920	150092	736453	562275	174178	46822
2009-10	263	824100	93550	108458	809044	646616	162428	46970
2010-11	263	861278	86884	107441	843590	672067	171523	44101
2011-12	263	807305	83157	76949	824281	661528	162753	33333
2012-13	274	892200	116081	106323	898240	651670	246570	37051
2013-14	274	939965	129796	132378	931890	720629	211561	42544
2014-15	289	982172	132904	139454	974797	750512	224285	43369
2015-16	292	987258	139201	162386	962945	753246	209699	44497
2016-17	290	1063645	143722	153715	1056034	857310	198724	42115
2017-18	247	1082179	191064	179554	1090682	857987	232695	45122
2018-19	247	1075008	186447	178128	1082390	888248	194132	46059
2019-20	247	976627	221511	180109	997528	812952	184576	66560
2020-21	247	998181	342664	169862	1182999	991173	191826	54544
2021-22	247	1006783	252995	215857	1033312	843488	189824	65153
2022-23	247	996268	204535	194104	966807	819302	147505	105045
2023-24	247	972018	197405	143963	977666	839259	138407	152839
(Jul: - May:)	247	892683	183047	133473	873486	746371	127115	173816
Jul:	247	79388	16900	12613	74175	63375	10800	114545
Aug:	247	80286	17128	12820	75414	64584	10830	123725
Sep:	247	79566	17126	12671	82881	70238	12643	124865
Oct:	247	80965	17026	12804	82132	70370	11762	127920
Nov:	247	81814	17111	12711	86256	72415	13841	127878
Dec:	247	80965	17026	12309	78792	67188	11604	134768
Jan:	247	81977	16426	12009	78550	67046	11504	142612
Feb:	247	82975	15826	11909	81653	69104	12549	147851
Mar:	247	82786	16226	11609	79500	68934	10566	155754
Apr:	247	81586	16026	11409	77280	66814	10466	164677
May	247	80375	16226	10609	76853	66303	10550	173816
Jun:	247	79335	14358	10490	104180	92888	11292	152839
2024-25								
(Jul:- May:)	247	835573	157095	107658	849355	714387	134968	188494
Jul:	247	78723	14475	11303	89899	71986	17913	144835
Aug:	247	77815	15287	14884	88624	71195	17429	134429
Sep:	247	77554	15640	10942	78344	66627	11717	138337
Oct:	247	77160	14540	9942	76767	65194	11573	143328
Nov:	247	77474	13640	8942	75425	65152	10273	150075
Dec:	247	75774	13341	8743	75774	63452	12322	154673
Jan:	247	75174	14032	8742	74949	62821	12128	160188
Feb:	247	74247	13640	8729	74491	63695	10796	164855
Mar:	247	74000	13440	8542	70872	61175	9697	172881
Apr:	247	73894	14630	8447	71381	61187	10194	181577
May:	247	73758	14430	8442	72829	61903	10926	188494

TABLE 12: PRODUCTION, PURCHASE, SALE AND STOCK OF COTTON CLOTH.

(000 Mtrs.)

Year (July-June)/ Month	No. Of Reporting Mills	Production	Purchased	SALE			Stock at the end of Year/ Month
				Total	Within Country	Exported	
2008-09	52	350406	52966	397698	207800	189898	75588
2009-10	52	369035	62330	438802	258870	179932	68151
2010-11	53	377058	27814	411759	273413	138346	61264
2011-12	53	324906	26410	354262	245679	108583	58318
2012-13	56	337955	39613	384441	227950	156491	51445
2013-14	56	414827	44459	454427	230989	223438	56304
2014-15	57	468206	33332	500905	297034	203871	56937
2015-16	57	522412	18246	542268	325894	216374	55327
2016-17	58	670884	42791	703647	431374	272273	65355
2017-18	39	703513	44908	749157	439486	309671	64619
2018-19	39	697096	38577	751178	456319	294859	49114
2019-20	39	650317	30785	658561	455655	202906	75042
2020-21	38	644439	48331	702494	513618	188876	65318
2021-22	38	690956	48439	728202	512555	215647	76511
2022-23	38	653813	166284	804749	633760	170989	91859
2023-24	38	587324	197410	769650	600104	169546	106943
(Jul: – May:)	<u>38</u>	<u>543521</u>	<u>182551</u>	<u>703808</u>	<u>552774</u>	<u>151034</u>	<u>114123</u>
Jul:	38	50804	18204	68539	55592	12947	92328
Aug:	38	51916	18404	69671	56704	12967	92977
Sep:	38	50678	18204	67929	54982	12947	93930
Oct:	38	50999	18104	69167	55220	13947	93866
Nov:	38	50871	18211	69278	55017	14261	93670
Dec:	38	51100	18104	69004	55057	13947	93870
Jan:	38	51292	17304	68622	53675	14947	93844
Feb:	38	51151	18304	65481	52034	13447	97818
Mar:	38	46130	12904	54481	41127	13354	102371
Apr:	38	44739	11904	51465	37239	14226	107549
May:	38	43841	12904	50171	36127	14044	114123
Jun:	38	43803	14859	65842	47330	18512	106943
<u>2024-25</u>							
(Jul: – May:)	<u>38</u>	<u>447358</u>	<u>133790</u>	<u>507128</u>	<u>379455</u>	<u>127673</u>	<u>180963</u>
Jul:	38	42724	13228	57454	41853	15601	105441
Aug:	38	41415	17353	53079	40048	13031	111130
Sep:	38	41385	13261	50410	38282	12128	115366
Oct:	38	41256	11261	44281	33250	11031	123602
Nov:	38	41214	11059	44214	32509	11705	131661
Dec:	38	40324	10949	43242	32411	10831	139692
Jan:	38	40300	11059	43342	32509	10833	147709
Feb:	38	39815	10959	43810	33010	10800	154673
Mar:	38	39725	11059	42640	31920	10720	162817
Apr:	38	39645	11876	42429	31888	10541	171909
May:	38	39555	11726	42227	31775	10452	180963

TABLE 13: EMPLOYMENT AND WAGES/SALARIES

Year (July-June)/ Month	No. Of Reporting Mills	E M P L O Y M E N T (Nos.)*			WAGES/SALARIES (000 Rs.)		
		Total	Production Workers	Office Staff	Total	Production Workers	Office Staff
2008-09	288	162984	139152	23832	802438	629608	172830
2009-10	288	168727	144487	24240	944137	750701	193436
2010-11	295	166718	142756	23962	1149580	893633	255947
2011-12	295	163535	140315	23220	1171743	926744	245002
2012-13	280	169697	144411	25286	1323153	1043134	280586
2013-14	281	172129	144216	27913	1627528	1286234	341294
2014-15	289	170528	143048	27480	1734882	1372957	361925
2015-16	289	164049	135777	28272	1925533	1497525	423209
2016-17	298	165251	133259	31992	2069106	1599857	469249
2017-18	299	161727	133190	28537	2251084	1756455	494629
2018-19	299	157846	131085	26761	2438412	1891246	247166
2019-20	299	151851	126203	25648	2499773	1973563	526210
2020-21	285	154706	129886	24820	2816361	2213454	602907
2021-22	285	157343	132207	25136	3146792	2425150	721642
2022-23	285	150922	126438	24484	3307707	2550426	757281
2023-24	285	144754	121749	23005	3334736	2596046	738690
(Jul: - May:)	285	144859	121851	23008	3334700	2595943	738757
Jul:	285	143780	120886	22894	3332210	2589146	743064
Aug:	285	144155	121036	23119	3334120	2590137	743983
Sep:	285	145255	122036	23219	3336181	2598182	737999
Oct:	285	145557	122238	23319	3336063	2598282	737781
Nov:	285	145571	122731	22840	3336611	2598372	738239
Dec:	285	145557	122238	23319	3336063	2598282	737781
Jan:	285	145657	122435	23222	3337164	2599183	737981
Feb:	285	145557	122238	23319	3336063	2598282	737781
Mar:	285	144443	121432	23011	3331136	2593921	737215
Apr:	285	144300	121504	22796	3330021	2593307	736714
May	285	143612	121585	22027	3336063	2598282	737781
Jun	285	143598	120631	22967	3335141	2597174	737970
2024-25							
(Jul: - May:)	285	141389	117456	23933	3328686	2595385	733301
Jul:	285	142970	120031	22939	3331120	2599045	732075
Aug:	285	141766	117942	23629	3331120	2599120	732000
Sep:	285	141760	117900	23860	3332181	2600031	732150
Oct:	285	141611	117810	23801	3331000	2598100	732900
Nov:	285	141575	117413	24162	3331001	2598000	733001
Dec:	285	141341	117241	24100	3330010	2597009	733001
Jan:	285	141022	117115	23907	3327651	2599175	728476
Feb:	285	140945	116789	24156	3326405	2599010	727395
Mar:	285	140865	116699	24166	3326201	2587124	739077
Apr:	285	140775	116587	24188	3325321	2586214	739107
May:	285	140645	116484	24161	3323531	2586412	737119

* = Monthly averages over the eleven month.

ANNEXURE-II

PERFORMANCE OF WOOLLEN TEXTILE INDUSTRY

Report for the month of May 2025

Coverage

The report covers the following Twenty one (21) Woollen Textile Mills of Punjab Province. Their installed and working capacities during the month are as under:-

Production

The Woollen Textile Mills produced 762 thousand Kgs. of Woollen Yarn, and Nil production of Knitting Wool during the month May 2025. The production of Woollen Yarn which was 0.1% higher than the last month.

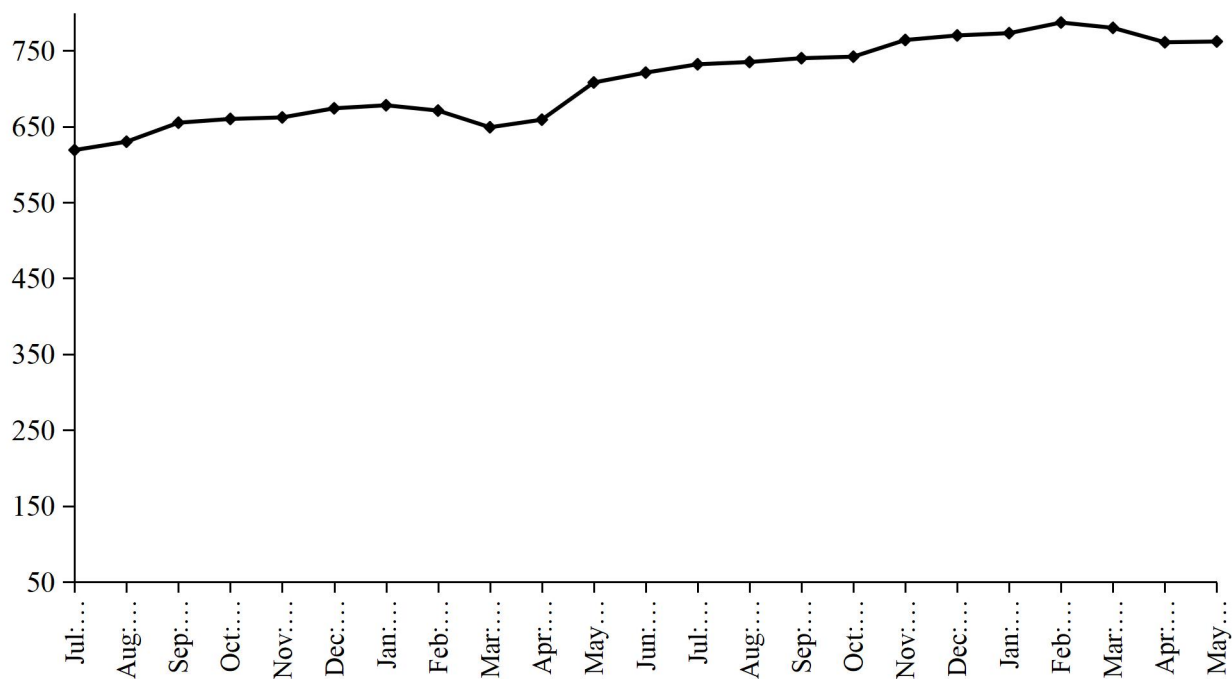
Employment

Total employment in the mills under report was 938 which was same as the last month. Out of this total employment 733 were production worker.

PRODUCTION OF KNITTING WOOL

July 2023 to May 2025

(000 Kg.)



PRODUCTION OF WOOLEN YARN

July 2023 to May 2025

(000 Kg.)

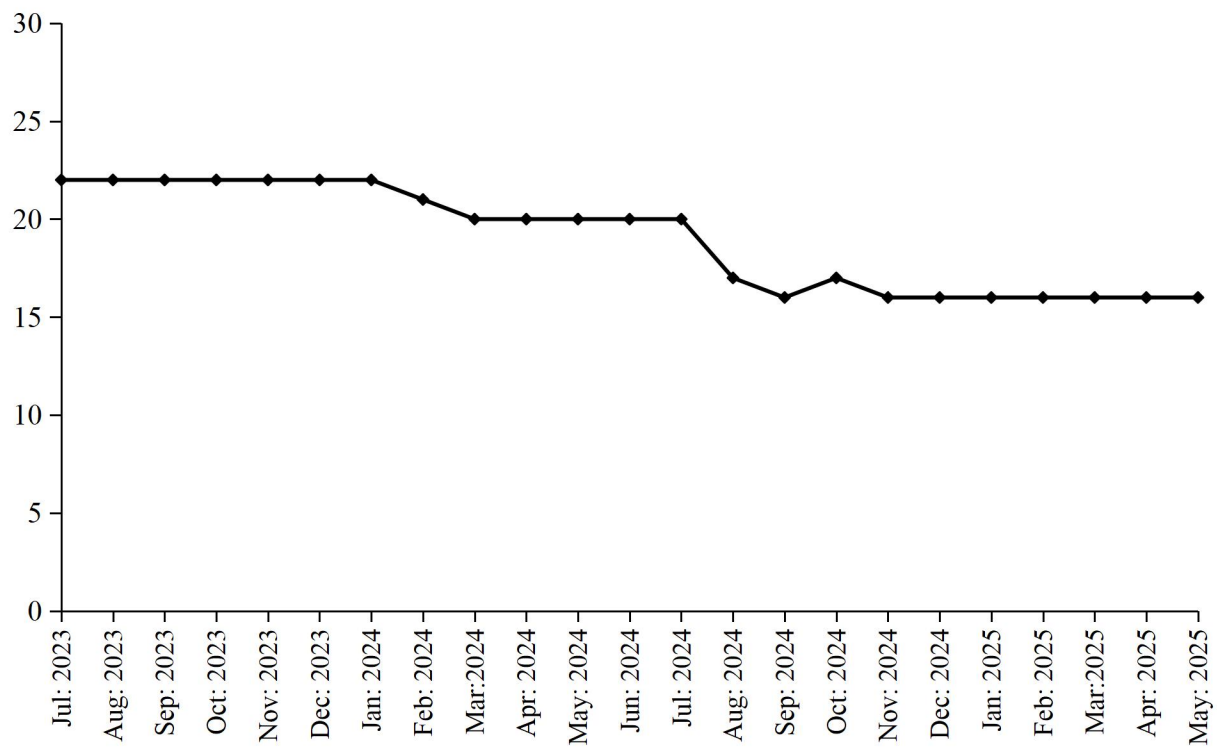


TABLE 13: MANUFACTURING ACTIVITY OF WOOLLEN INDUSTRY.

Year (July-June)/ month	No. Of Reporting Units	PRODUCTION				EMPLOYMENT (Nos.) *	
		Woollen Yarn (M.Tons)	Knitting Wool (M.Tons)	Woollen Worsted Cloth (000 Mtrs.)	Blankets (Nos.)	Total	Production Workers
2008-09	27	1046	2778	991	-	1787	1476
2009-10	27	1154	2565	825	-	1797	1491
2010-11	27	1037	2351	844	-	1729	1478
2011-12	27	826	2097	808	-	1680	1405
2012-13	27	740	2250	592	-	1661	1413
2013-14	27	864	1633	221	-	1410	1153
2014-15	27	1510	1805	243	-	1301	1037
2015-16	27	1334	1963	246	-	1252	998
2016-17	27	1738	1898	226	-	1318	1056
2017-18	26	2159	1673	160	-	1397	1116
2018-19	26	1918	1488	11	-	1372	1096
2019-20	25	2731	883	79	-	1318	1055
2020-21	21	7988	428	172	-	1303	1017
2021-22	21	7068	27	223	-	1096	832
2022-23	21	7484	-	214	-	918	721
2023-24	21	7986	-	255	-	915	715
(Jul: – May:)	21	6606	=	215	=	913	714
Jul:	21	619	-	22	-	904	706
Aug:	21	630	-	22	-	904	706
Sep:	21	655	-	22	-	902	704
Oct:	21	660	-	22	-	912	714
Nov:	21	662	-	22	-	912	714
Dec:	21	674	-	22	-	915	718
Jan:	21	678	-	22	-	912	718
Feb:	21	671	-	21	-	918	718
Mar:	21	649	-	20	-	918	718
Apr:	21	659	-	20	-	925	721
May	21	708	-	20	-	925	721
Jun:	21	721	-	20	-	928	724
2024 -25							
(Jul: – May:)	21	7585	=	166	=	936	730
Jul:	21	732	-	20	-	933	728
Aug:	21	735	-	17	-	933	726
Sep:	21	740	-	16	-	930	725
Oct:	21	742	-	17	-	932	728
Nov:	21	764	-	16	-	935	730
Dec:	21	770	-	16	-	938	733
Jan:	21	773	-	16	-	938	733
Feb:	21	787	-	16	-	938	733
Mar:	21	780	-	16	-	938	733
Apr:	21	761	-	16	-	938	733
May:	21	762	-	16	-	938	733

* = Monthly Average over the eleven month..

PERFORMANCE OF VEGETABLE GHEE/COOKING OIL INDUSTRY

Report for the month of May 2025

Coverage

This report covers Fifty (50) Vegetable Ghee/Cooking Oil Mills of the Punjab Province.

Purchase, Consumption and Stock of Edible Oil

During the month of May 2025, about 39272 metric tons Local Oil and 27932 metric tons Imported Palm Oil was purchased by the Mills, meanwhile, about 19401 metric tons Other Oil was produced as compared to 19399 metric tons produced in the last month. The Oil intake for production of Vegetable Ghee/Cooking Oil during the month was recorded at 43116 metric tons witnessed 2.6% increase as compared to the last month. The stock of Oil at the end of the month was closed at 87044 metric tons.

Production, Sale and Stock of Vegetable Ghee/Cooking Oil

Vegetable Ghee and Cooking Oil production in the province during the month registered 2.2% percent increase as compared to last month. The data revealed about 86520 metric tons & 21125 metric tons production of Vegetable Ghee and Cooking Oil during the month respectively. The sale of Vegetable Ghee/Cooking Oil during the month was 107815 metric tons witnessed 3.5% percent increase as compared to the last month. The stock of Vegetable Ghee/Cooking Oil closed at the end of the month at 24667 metric tons.

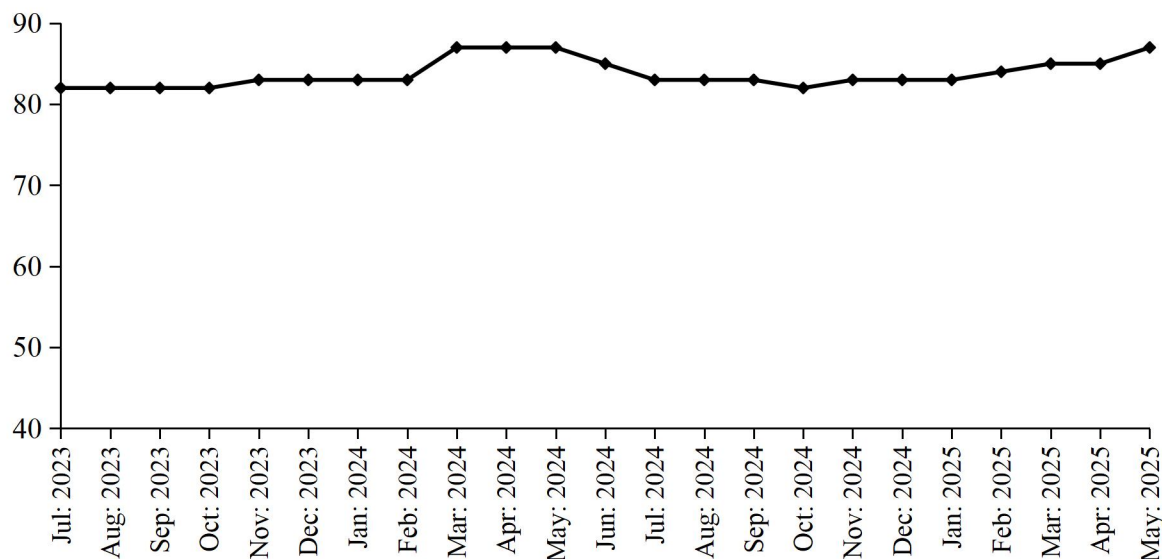
Employment and Wages/Salaries

Total employment recorded in the Mills of Vegetable Ghee/Cooking Oil during the month was 5836, which is 0.1% higher than the last month. Production workers was 3721 amount of Rs.129 million was paid by the Mills against total wages/salaries for the month of May 2025.

PRODUCTION OF VEGETABLE GHEE

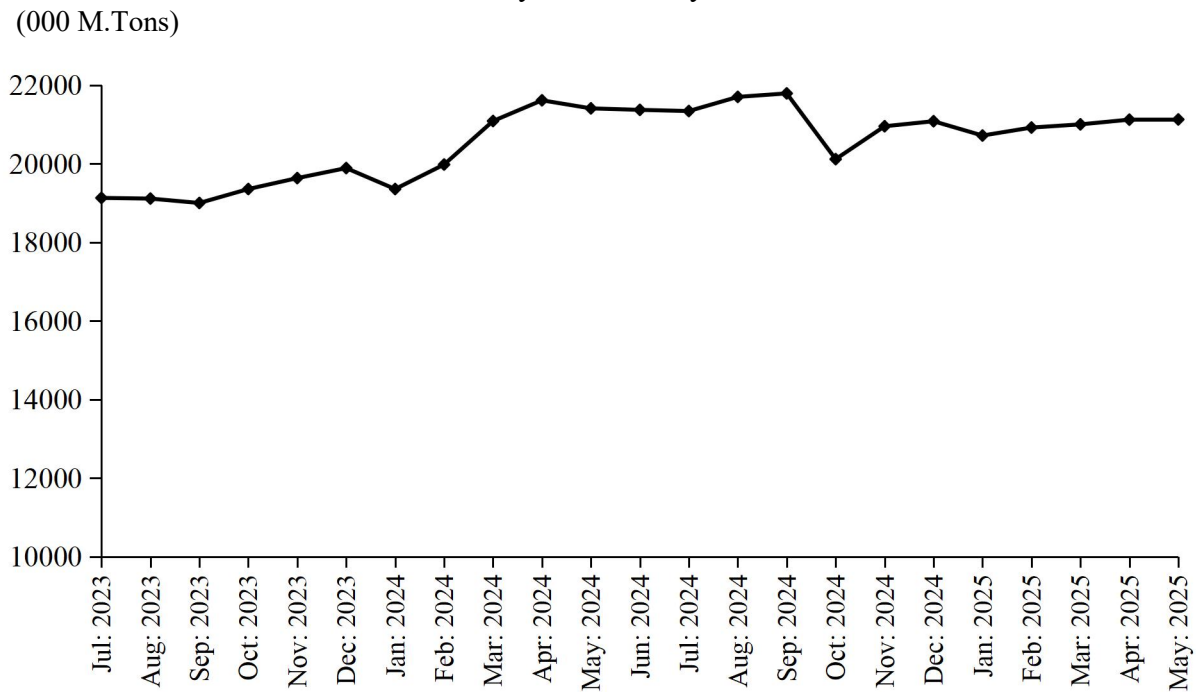
July 2023 to May 2025

(000 M.Tons)



PRODUCTION OF COOKING OIL

July 2023 to May 2025



PRODUCTION OF VEGETABLE GHEE/COOKING OIL

July 2023 to May 2025

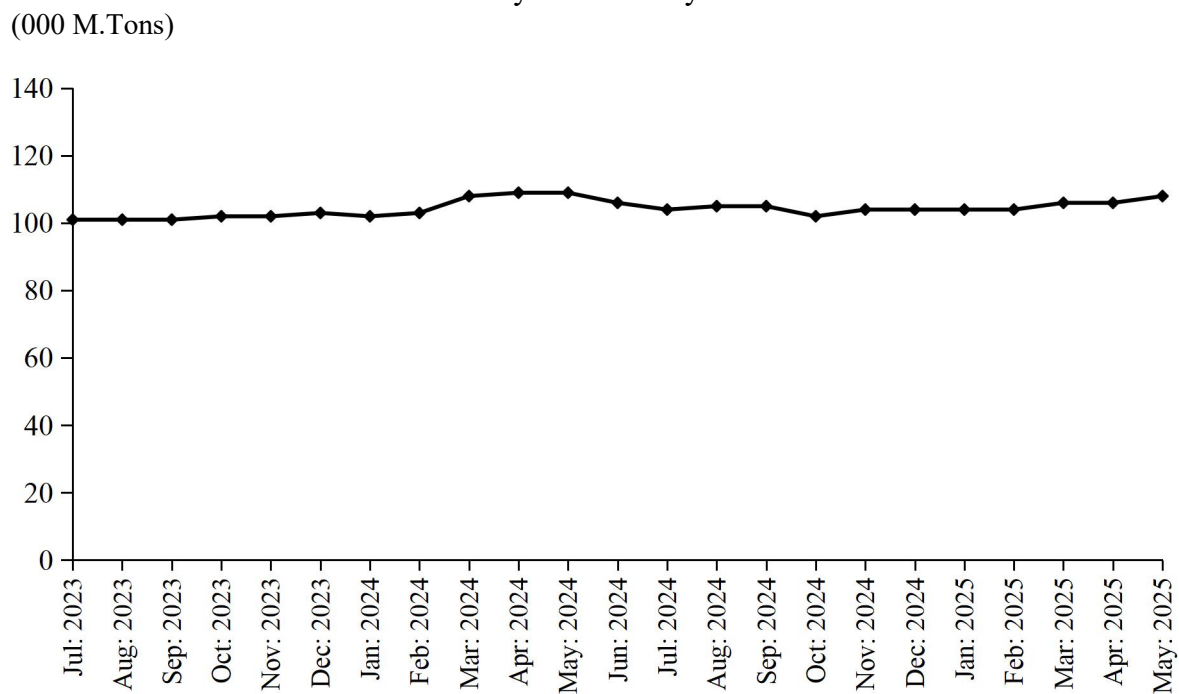


TABLE 15:DETAIL OF THE STOCK, PURCHASED, CONSUMED AND SALE OF EDIBLE OIL.

(M. Tons)

Year (July-June)/ Month	No. Of Report- ing Mills	LOCALLY PURCHASED		PRODUCED		Import- ed	Consumed / Sent for Refinery	Sold/ Trans- ferred	Stock at the end of Year/ Month
		Cotton Seed Oil	Other Oil	Cotton Seed Oil	Other Oil				
2008-09	54	-	100857	-	5206	398310	487250	-	32157
2009-10	54	-	104202	-	25852	512468	615680	25090	33909
2010-11	54	327	183884	-	35675	482008	634601	77461	23741
2011-12	54	-	183112	-	34577	423778	607993	37657	19558
2012-13	54	-	229765	-	43652	431163	660016	33454	30668
2013-14	54	-	216660	-	38972	495070	696775	42965	41630
2014-15	53	-	162624	-	49151	585062	753658	50338	34471
2015-16	53	-	185823	-	44073	885878	885882	18622	40602
2016-17	50	-	220571	-	60257	633199	881071	39566	33992
2017-18	51	-	206532	-	83627	849072	1074228	60975	38020
2018-19	51	-	213910	-	92005	836051	1055742	77884	46360
2019-20	52	-	248945	-	60421	715798	921638	102073	47813
2020-21	50	-	374560	-	84020	578628	837241	176122	65658
2021-22	44	-	363623	-	137479	560354	710634	330409	86071
2022-23	44	-	442323	-	147675	441595	481286	554926	81452
2023-24	44	-	463531	-	197118	363355	551880	468955	84621
(Jul: - May:)	44	=	425696	=	179612	335356	505264	426855	89997
Jul:	44	-	39239	-	16513	32370	45496	41549	82529
Aug:	44	-	39136	-	15701	32258	45081	40067	84476
Sep:	44	-	39239	-	16013	32740	45096	40898	86474
Oct:	44	-	39134	-	16045	30119	45449	38171	88152
Nov:	44	-	39035	-	15945	31130	45249	38070	90943
Dec:	44	-	38538	-	16047	30130	44849	37073	93736
Jan:	44	-	37035	-	16945	28115	44283	38070	93478
Feb:	44	-	38035	-	17045	29930	44749	38095	95644
Mar:	44	-	39035	-	15945	30130	45249	37092	98413
Apr:	44	-	38235	-	15545	29930	45149	37105	99869
May:	44	-	39035	-	17868	28504	54614	40665	89997
June	44	-	37835	-	17506	27999	46616	42100	84621
2023-24									
(Jul:- May:)	44	=	421714	=	202842	289918	470127	441924	87044
Jul:	44	-	37435	-	17206	27399	46653	40454	79554
Aug:	44	-	38225	-	18311	25763	43517	39458	78878
Sep:	44	-	38215	-	17811	25263	41117	39448	79602
Oct:	44	-	38225	-	18311	25553	41610	40448	79633
Nov:	44	-	38195	-	18271	25563	44086	37458	80118
Dec:	44	-	37725	-	18211	25463	41677	39342	80498
Jan:	44	-	37623	-	18111	25363	41518	39139	80938
Feb:	44	-	38225	-	18311	25763	41677	39233	82327
Mar:	44	-	39308	-	19499	27953	42718	41814	84555
Apr:	44	-	39266	-	19399	27903	42766	42014	86343
May:	44	-	39272	-	19401	27932	42788	43116	87044

TABLE 16:DETAIL OFPRODUCTION, SALE AND STOCK OF VEGETABLE GHEE/COOKING OIL

(M.Tons)

Year (July-June)/ Month	No. Of Repor- ting Mills	P R O D U C T I O N			Sale	Stock At the end
		Vegetable Ghee	Cooking Oil	Total		
2008-09	54	427976	60147	488123	486544	8119
2009-10	54	519765	87487	607252	606825	8546
2010-11	54	524809	96711	621520	622978	7088
2011-12	54	507688	93151	600839	600269	7658
2012-13	54	537111	119437	656548	654031	9059
2013-14	54	533628	20248	159078	156829	10897
2014-15	53	576943	102881	679824	679487	8985
2015-16	53	641889	113708	755597	755526	9057
2016-17	50	644550	110166	754716	755306	8170
2017-18	51	786226	127257	913483	912553	9100
2018-19	51	804497	152352	956849	944020	18074
2019-20	50	880796	193901	1074697	1076905	15866
2020-21	50	860505	198332	1058837	1063974	10729
2021-22	44	859227	193809	1053036	1051023	12742
2022-23	44	950409	217618	1168027	1168721	12048
2023-24	44	1006093	240923	1247016	1247368	11696
(Jul: - May:)	44	921200	219581	1140754	1140956	11846
Jul:	44	82249	19129	101378	100981	12445
Aug:	44	82106	19112	101218	100824	12839
Sep:	44	82038	19000	101038	100621	13256
Oct:	44	81878	19355	101233	102262	12227
Nov:	44	82787	19633	102420	101471	13176
Dec:	44	82983	19888	102871	102825	13222
Jan:	44	82787	19355	102142	103157	12207
Feb:	44	83154	19978	103132	102760	12579
Mar:	44	86529	21085	107614	106843	13350
Apr:	44	87455	21612	109067	109080	13337
May:	44	87234	21407	108641	110132	11846
June	44	84893	21369	106262	106412	11696
<u>2024-25</u>						
(Jul: - May:)	44	920365	231853	1152218	1139247	24667
Jul:	44	83018	21339	104357	104306	11747
Aug:	44	83412	21699	105111	105359	11499
Sep:	44	83491	21788	105279	105193	11585
Oct:	44	82165	20115	102280	100331	13534
Nov:	44	82828	20952	103780	98533	18781
Dec:	44	83252	21080	104332	103353	19760
Jan:	44	82969	20716	103685	103323	20122
Feb:	44	83515	20919	104434	102874	21682
Mar:	44	84545	21000	105545	104020	23207
Apr:	44	84650	21120	105770	104140	24837
May:	44	86520	21125	107645	107815	24667

TABLE 17:EMPLOYMENT AND WAGES/SALARIES.

Year (July-June)/ Month	No. Of Reporting Mills	E M P L O Y M E N T (NOS)*			WAGES/SALARIES (000 Rs.)	
		Total	Production Workers	Office Staff	Total	Production Workers
2008-09	54	3406	2109	1297	23522	12589
2009-10	54	3449	2176	1273	30532	17526
2010-11	54	3675	2366	1309	34883	20727
2011-12	54	3703	2558	1145	35708	20873
2012-13	54	3798	2625	1173	40008	23277
2013-14	54	4072	2753	1319	50720	28667
2014-15	53	4009	2756	1253	55717	31302
2015-16	53	4122	2901	1221	64521	38408
2016-17	50	3933	2678	1255	62720	35328
2017-18	51	4105	2737	1368	65889	38083
2018-19	52	4111	2787	1324	69521	39564
2019-20	50	5001	3286	1715	77791	41351
2020-21	50	5111	3250	1861	91913	42105
2021-22	44	5295	3287	2008	99277	48422
2022-23	44	5649	3464	2185	122345	59546
2023-24	44	5904	3744	2160	130030	61366
(Jul: - May:)	44	5910	3750	2160	130159	61459
Jul:	44	5798	3681	2117	129493	60673
Aug:	44	5798	3681	2117	129493	60673
Sep:	44	5798	3681	2117	129493	60673
Oct:	44	5795	3680	2115	129512	60751
Nov:	44	5810	3690	2120	129611	60840
Dec:	44	6000	3786	2214	130512	60901
Jan:	44	5848	3761	2087	129512	60751
Feb:	44	6000	3786	2214	130615	62753
Mar:	44	6101	3886	2215	132400	63751
Apr:	44	6120	3896	2224	132512	64051
May:	44	5945	3718	2227	128594	60231
Jun:	44	5837	3687	2150	128615	60341
2024-25						
(Jul: - May:)	44	5851	3719	2132	129463	60795
Jul:	44	5831	3682	2149	129217	60715
Aug:	44	5876	3728	2148	129221	60720
Sep:	44	5878	3730	2148	129225	60723
Oct:	44	5816	3730	2086	129178	60513
Nov:	44	5876	3728	2148	129669	60837
Dec:	44	5896	3738	2158	129770	61038
Jan:	44	5876	3728	2148	129669	60837
Feb:	44	5820	3699	2121	129558	60800
Mar:	44	5825	3710	2115	129665	60900
Apr:	44	5830	3712	2118	129700	60950
May:	44	5836	3721	2115	129216	60710

* =Monthly averages over the eleven month.

PERFORMANCE OF BEVERAGES INDUSTRY

Report for the month of May 2025

Coverage

The report covers Thirty (30) Beverages factories of the Punjab.

Production

The factories produced 259883 thousand litres of Soft Drinks and 24952 thousand litres of Fruit Juices during May 2025. The production of Soft Drinks and Fruit Juices was 13.1% higher and 32.4% higher than the last month respectively.

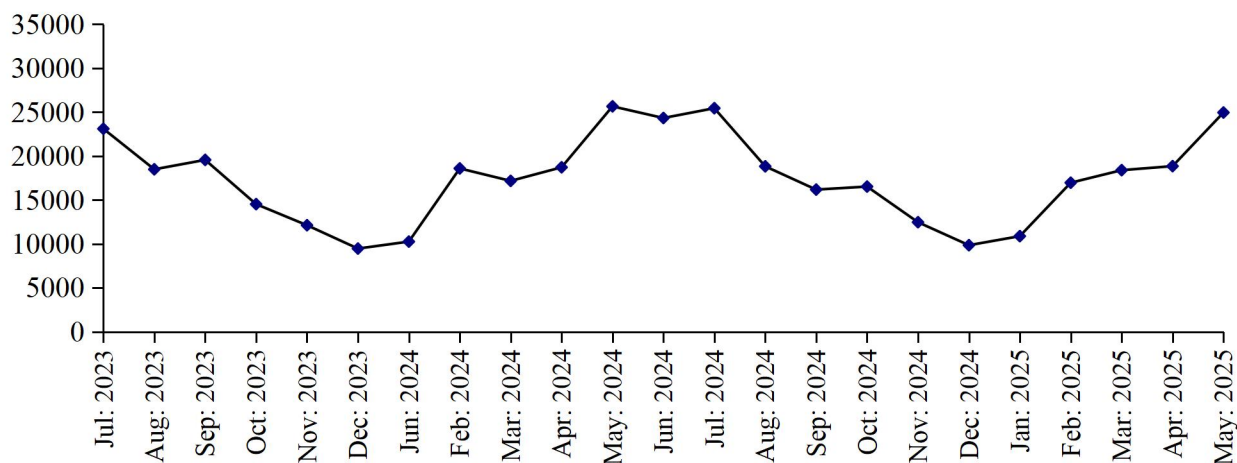
Employment

Total employment in these factories was 11603 which was 0.3% lower than the last month. Out of this total employment 7610 were production workers.

PRODUCTION OF FRUIT JUICES

July 2023 to May 2025

('000'Ltrs)



PRODUCTION OF SOFT DRINKS

July 2023 to May 2025

('000'Ltrs)

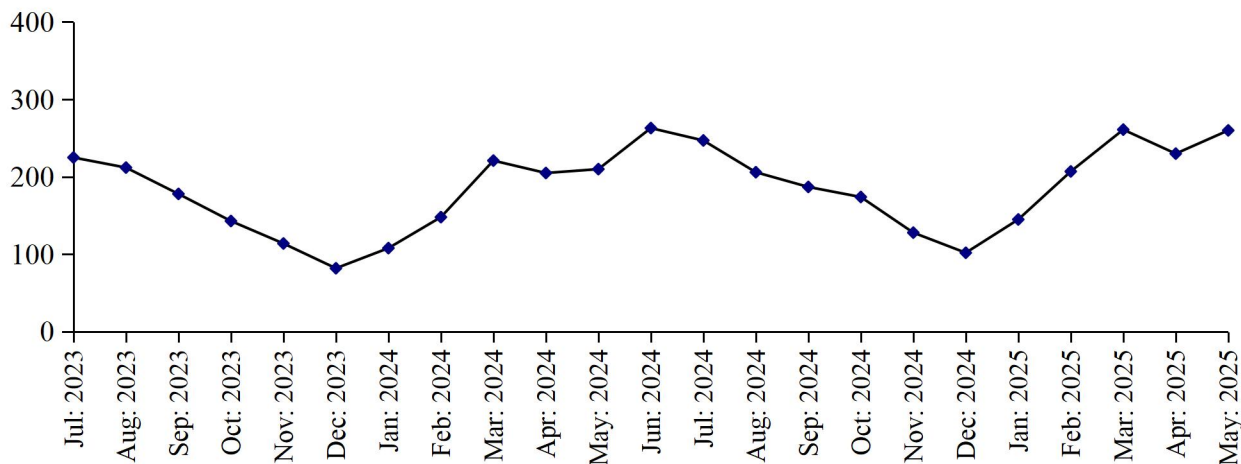


Table 18: MANUFACTURING ACTIVITY OF BEVERAGES INDUSTRY.

Year (July-June)/ Month	No. Of Reporting Units	PRODUCTION (in '000' Ltrs)		EMPLOYMENT (NOS.)*	
		Soft Drinks	Fruit Juices	Total	Production Workers
2008-09	37	1445760	67932	6492	3037
2009-10	37	1041643	68020	6925	3323
2010-11	37	982963	92115	7577	3027
2011-12	37	1155234	116048	7948	3136
2012-13	37	1349580	120176	8224	3501
2013-14	37	1409663	127571	8125	3659
2014-15	34	1552102	156889	8328	4379
2015-16	30	1722698	139237	15461	8600
2016-17	29	1964432	154877	8549	3997
2017-18	30	1893694	177397	8981	4216
2018-19	31	1830166	219885	8529	4306
2019-20	31	1587814	183550	8173	4099
2020-21	31	1964275	172608	7988	4053
2021-22	30	2258557	215698	8173	4210
2022-23	30	2196507	227924	8244	4267
2023-24	30	2110368	211991	9250	5424
(Jul: - May:)	30	1846884	187656	9044	5216
Jul:	30	225104	23104	8272	4309
Aug:	30	212098	18489	8240	4278
Sep:	30	178185	19560	7912	4283
Oct:	30	142799	14523	8141	4221
Nov:	30	114093	12122	8054	4197
Dec:	30	82479	9465	7962	4136
Jan:	30	108411	10259	7966	4157
Feb:	30	147817	18589	8332	4461
Mar:	30	220576	17171	11542	7815
Apr:	30	204915	18718	11514	7793
May:	30	210407	25656	11544	7731
June:	30	263484	24335	11523	7705
2024-25					
(Jul: - May:)	30	2147400	189322	11478	7703
Jul:	30	247096	25445	11585	8042
Aug:	30	206060	18827	11556	7722
Sep:	30	187336	16179	11522	7709
Oct:	30	174292	16523	11474	7634
Nov:	30	128057	12466	11402	7595
Dec:	30	101641	9848	11412	7560
Jan:	30	144704	10879	11186	7583
Feb:	30	207405	16962	11369	7794
Mar:	30	261075	18392	11508	7879
Apr:	30	229851	18849	11643	7601
May:	30	259883	24952	11603	7610

* =Monthly Average over the eleven month.

PERFORMANCE OF SUGAR INDUSTRY

Report for the month of May 2025

Coverage

This report covers Forty four (44) Sugar Mills located in the Punjab Province.

Cane Crushing

Total cane crushed for the month of “May” 2025, because of the off crushing season.

Production

Total Sugar Produced during the month of “May” 2025, is mill due to off season.

Sale and Stock of Sugar 2024-25

The sugar sold out from the previous stock as reported during the month of May 2025 was 275294 Metric Tons and the remaining stock of sugar is 674598 Metric Tons.

Employment and Wages / Salaries

Total employment during the month of May 2025 was 27699. Out of this total employment, the number of production workers were 19625. The total wages/salaries during this month is amounted to 677 million rupees.

MONTHLY PRODUCTION OF SUGAR

Season 2023-24 VS 2024-25

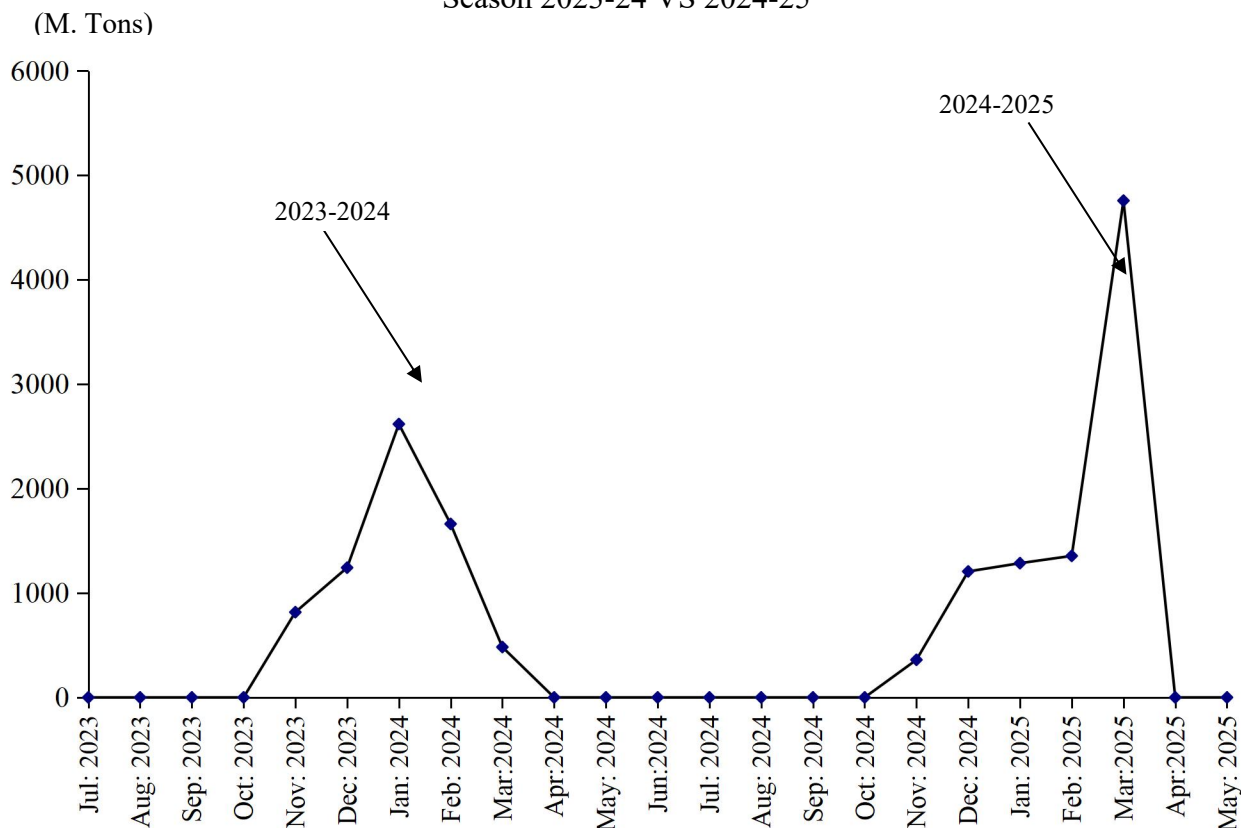


Table 19: MANUFACTURING ACTIVITY OF SUGAR INDUSTRY.

(Metric Tons)

Year	Months	No. Of Units Covered	Sugarcane Crushed	Opening Stock Of Sugar	Production Of Sugar	Sale Of Sugar	Closing Stock Of Sugar	Molasses
2008-09	Nov:08-Apr:09	45	20388990	-	1926209	-	-	1280422
2009-10	Nov:09 –March10	46	22460655	-	1987285	-	-	887362
2010-11	Nov:10 –April 11	46	27026172	128193	2475907	2013178	590922	709876
2011-12	Oct: 11- Apr: 12	46	32310644	590922	3057611	2633244	1015289	750699
2012-13	Nov:12–May 13	46	35745878	1015289	3739171	4064180	690280	666328
2013-14	Nov:13–Apr: 14	46	30864941	690280	3075144	2013384	1752040	807507
2014-15	Nov:14–Apr: 15	46	31453631	1752040	3036312	2775995	2012357	66682
2015-16	Nov:15–Apr: 16	44	28922605	2012357	2666278	2951038	1727597	571184
2016-17	Nov: 16-Apr: 17	44	44143327	1727597	4314228	2754948	3286877	1522522
2017-18	Nov: 17-Apr: 18	45	53190310	3286877	5111165	6745070	1652972	1352698
2018-19	Dec: 18-Apr: 19	45	30835769	1652972	4868545	4278122	2243395	1361477
2019-20	Nov: 19-Mar:20	44	23839905	1973322	3102104	4054794	1020632	671189
2020-21	Nov: 20-Mar:21	44	50011167	1020632	3877150	3620582	1277200	1166132
2021-22	Nov:21-Apr:22	44	47559505	1277200	5258131	4696627	1838704	2631504
2022-23	Nov:22-Apr:23	44	21410225	1838704	5575980	5397591	2017093	778634
2023-24	Nov: - Apr: 24	44	5352291	2017093	5104124	6019153	1102064	1164697
<u>2024-25</u>	<u>(Jul: – May:)</u>	<u>44</u>	<u>8464867</u>	<u>527849</u>	<u>4681455</u>	<u>4534706</u>	<u>674598</u>	<u>751203</u>
	Jul:	44	-	527849	-	79205	448644	-
	Aug:	44	-	448644	-	72293	376351	-
	Sep:	44	-	376351	-	77251	299100	-
	Oct:	44	-	299100	-	77100	222000	-
	Nov:	44	4587516	222000	360146	233600	348546	-
	Dec:	44	3696442	348546	1205651	272410	1281787	279658
	Jan:	44	159914	1281787	1285121	1307157	1259751	131818
	Feb:	44	11016	1259751	1354891	1411172	1203470	221215
	Mar:	44	9979	1203470	475646	443665	1235451	118512
	Apr:	44	-	1235451	-	285559	949892	-
	May:	44	-	949892	-	275294	674598	-

TABLE 20: EMPLOYMENT AND WAGES / SALARIES

Year /Months	No. Of Units Covered	EMPLOYMENT (Nos.)			WAGES / SALARIES (000 Rs.)	
		Total	Production Workers	Office Staff	Total	Production Workers
2008-2009	45	21716	13193	8524	164256	95503
(Crushing Season)	45	27532	17387	10145	193291	119674
(Non-Crushing Season)	45	20262	12144	32473	156998	89461
2009-10	46	24448	15250	9197	197290	116870
(Crushing Season)	46	31580	20435	11145	247830	153135
(Non-Crushing Season)	46	19354	11547	7807	161190	90967
2010-11	46	22967	14468	8499	209749	126526
(Crushing Season)	46	27879	18340	9539	246395	154557
(Non-Crushing Season)	46	18055	10595	7459	173102	98495
2011-12	46	23078	13932	9145	230146	132212
(Crushing Season)	46	26017	10957	8007	204749	111423
(Non-Crushing Season)	46	18964	16058	9959	248287	147060
(2012-13)	46	25311	16021	9848	276892	171611
(Crushing Season)	46	28541	19094	10404	318296	203325
(Non-Crushing Season)	46	20788	11719	9069	127701	127212
(2013-14)	46	25672	16563	9009	318239	196709
(Crushing Season)	46	29968	19690	10278	366452	229798
(Non-Crushing Season)	46	21300	13907	7393	260446	162496
(2014-15)	46	23845	15042	8804	337354	207609
(Crushing Season)	46	27988	18137	9852	389645	244041
(Non-Crushing Season)	46	19703	11947	7755	285051	171178
(2015-16)	44	22554	14023	8531	341965	205969
(Crushing Season)	44	25752	16141	9611	388494	237002
(Non-Crushing Season)	44	19356	11738	7618	298435	174937
2016-17	45	24469	14900	9569	404061	250817
(Crushing Season)	45	30354	18632	11722	480241	305510
(Non-Crushing Season)	45	18583	11168	7415	327881	156664
2017-18	45	26874	16910	9964	588807	325440
(Crushing Season)	45	31429	20009	11419	706001	393686
(Non-Crushing Season)	45	22318	13810	8507	471613	257195
2018-19	45	28234	18208	10226	720481	406815
(Crushing Season)	45	32495	21556	10939	794668	459287
(Non-Crushing Season)	45	25190	15817	9373	667492	369336
2019-20	45	19599	12795	6834	419356	265765
(Crushing Season)	45	31689	21217	10472	722697	285965
(Non-Crushing Season)	45	22940	15223	9373	7717	507681
2020-21	44	27571	17326	10245	616305	359633
(Crushing Season)	44	33603	21507	12096	692380	424448
(Non-Crushing Season)	44	21538	13145	8393	540231	294819
2021-22	44	28202	17665	10537	680443	439798
(Crushing Season)	44	34807	21899	12908	760582	504374
(Non-Crushing Season)	44	21597	13430	8167	600255	375223
2022-23	44	28585	18343	10242	735006	503106
(Crushing Season)	44	36555	24339	12216	829622	487871
(Non-Crushing Season)	44	22893	14203	8690	667423	431143
2023-24	44	64390	43790	20600	752478	506309
(Crushing Season)	44	64390	24339	12216	781663	526791
(Non-Crushing Season)	44	22893	14203	8690	711619	485826
(Jul: – May:)	44	31903	21816	10087	761686	523152
Jul:	44	26736	19445	7291	727737	469194
Aug:	44	26277	18426	7851	747136	485558
Sep:	44	26736	19045	7691	739167	477087
Oct:	44	28066	20045	8021	748167	484087
Nov:	44	36271	22560	13711	796871	537916
Dec:	44	38071	23469	14602	818871	562363
Jan:	44	38012	25987	12025	834282	608811
Feb:	44	38245	25989	12256	835412	609913
Mar:	44	37316	25621	11695	824532	595421
Apr:	44	27504	19845	7659	629784	438712
May:	44	27699	19625	8074	676584	485612

*= Monthly average over the eleven month./ crushing/Non crushing season.

PERFORMANCE OF CIGARETTES INDUSTRY

Report for the month of May 2025

Coverage

This report covers three (03) Cigarettes factories of the Punjab.

Production

The production of Cigarettes during the month was 1530 Million Nos. Which was 0.1% lower than April 2025.

Sale and Stock

Sale of Cigarettes during the month was 1643 Million Nos. Which was 0.1% lower the last month.

Employment

Total employment in these factories during the month was 655, which was 0.3% lower the last month. Out of this total employment, 420 were production workers. Total wages/salaries for the month were amounted to Rs.69.0 Millions.

PRODUCTION OF CIGARETTES

July 2023 to May 2025

(Millions Nos.)

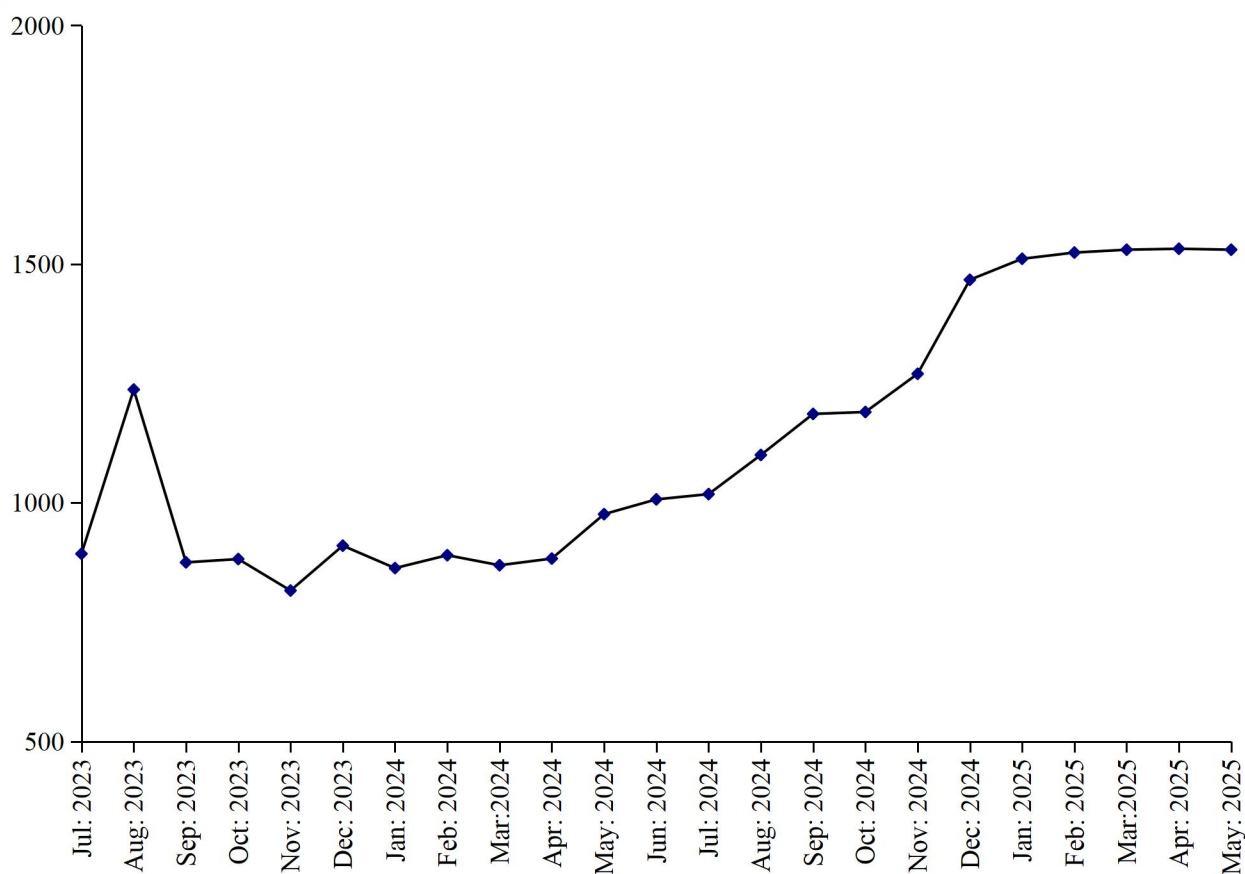


Table No.21

MANUFACTURING ACTIVITY OF CIGARETTES INDUSTRY.

Year (July-June)/ Month	No. Of Reporting Units	PRODUCTION,SALE & STOCK OF CIGARETTES (<i>Million Nos.</i>)			EMPLOYMENT* (<i>Nos.</i>)		WAGES/SALARIES (<i>'000'Rs.</i>)	
		Production	Sale	Stock at the end	Total	Production Workers	Total	Production Workers
2008-09	3	43058.0	42901.0	667	1307	1089	23946	18512
2009-10	3	37296.0	36987.0	976	1269	1136	26379	20638
2010-11	3	37944	37420	1500	1178	1051	28432	25294
2011-12	3	34955	35961	494	998	898	32942	29936
2012-13	3	37845	37996	343	907	811	27023	22214
2013-14	3	33094	24934	8503	904	797	27781	22032
2014-15	3	33966	38328	4141	905	793	32807	24413
2015-16	3	27502	29914	1729	808	707	33019	24855
2016-17	3	28452	274135	3046	603	509	33264	25008
2017-18	3	28324	30503	867	509	425	32139	23057
2018-19	3	35850	27486	9231	552	446	36978	21686
2019-20	3	25634	21861	13234	640	493	45641	20945
2020-21	3	21353	19306	15124	657	494	50439	21564
2021-22	3	19438	19013	15549	658	490	55998	24776
2022-23	3	15820	23373	7996	618	414	64979	33029
2023-24	3	11101	16698	2075	600	359	68659	29570
(Jul: -May:)	3	<u>10094</u>	<u>15887</u>	<u>2203</u>	<u>598</u>	<u>356</u>	<u>68625</u>	<u>29684</u>
Jul:	3	893	2357	6532	591	405	69943	38353
Aug:	3	1237	2109	5660	585	325	68244	34307
Sep:	3	875	2222	4313	586	325	68730	28207
Oct:	3	882	2122	3073	586	325	68725	28195
Nov:	3	816	1022	2867	586	325	68725	28195
Dec:	3	910	1010	2767	583	324	68730	28107
Jan:	3	863	935	2695	583	324	68730	28207
Feb:	3	890	1022	2563	616	388	68745	28215
Mar:	3	869	1019	2413	616	388	68734	28212
Apr:	3	883	1050	2246	619	390	66833	28315
May	3	976	1019	2203	624	393	68734	28215
Jun:	3	1007	1135	2075	628	395	69034	28315
<u>2024-25</u>								
(Jul: - May:)	<u>3</u>	<u>14858</u>	<u>14663</u>	<u>2270</u>	<u>647</u>	<u>412</u>	<u>69110</u>	<u>28506</u>
Jul:	3	1018	1119	1974	632	400	69034	28315
Aug:	3	1100	1115	1959	632	400	69034	28315
Sep:	3	1186	1123	2022	634	402	69037	28318
Oct:	3	1190	1119	2093	645	405	69241	28430
Nov:	3	1270	1130	2233	647	410	69037	28180
Dec:	3	1467	1142	2558	653	416	69147	30318
Jan:	3	1511	1542	2527	653	416	69137	28318
Feb:	3	1524	1442	2609	655	420	69137	28318
Mar:	3	1530	1643	2496	655	420	69137	28315
Apr:	3	1532	1645	2383	657	422	69237	28418
May:	3	1530	1643	2270	655	420	69037	28318

* = Monthly Average over the eleven month.

PERFORMANCE OF CEMENT INDUSTRY

Report for the month of May 2025

Coverage

This report covers eleven (11) factories in the Punjab.

Production of Clinker

The cement factories produced 1481782 Metric Tons of Clinker during May 2025, which was 1.1% higher than the last month. The factories consumed 1648114 Metric Tons of Clinker to produce Cement.

Production of Cement

The cement factories produced 1841838 Metric Tons of Cement during the month, which was 9.3% higher than the last month.

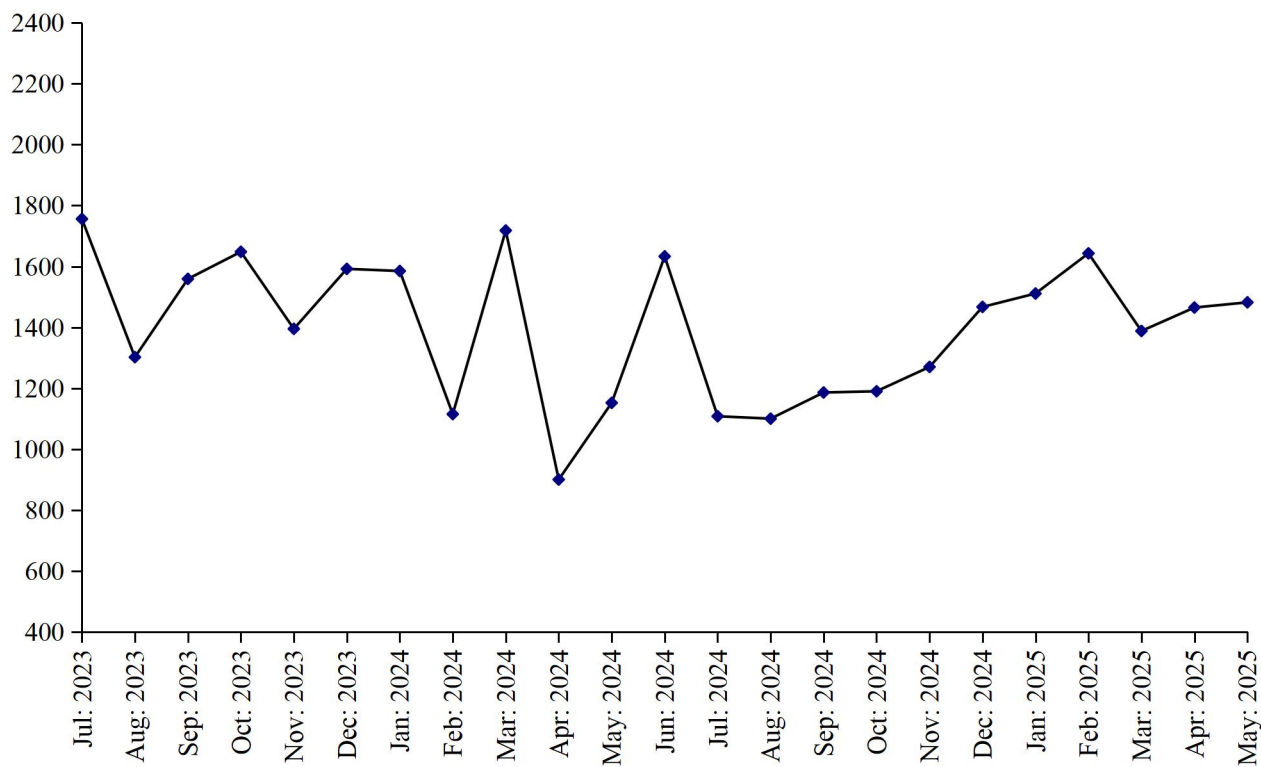
Employment

Total employment in the factories as reported was 7425 which is approximately same as the last month. Out of this total employment, 4345 were production workers. Total wages/salaries for the month under report were 853.3 Million Rupees.

PRODUCTION OF CLINKER

July 2023 to May 2025

(000 M. Tons)



PRODUCTION OF CEMENT

July 2023 to May 2025

(000 M. Tons)

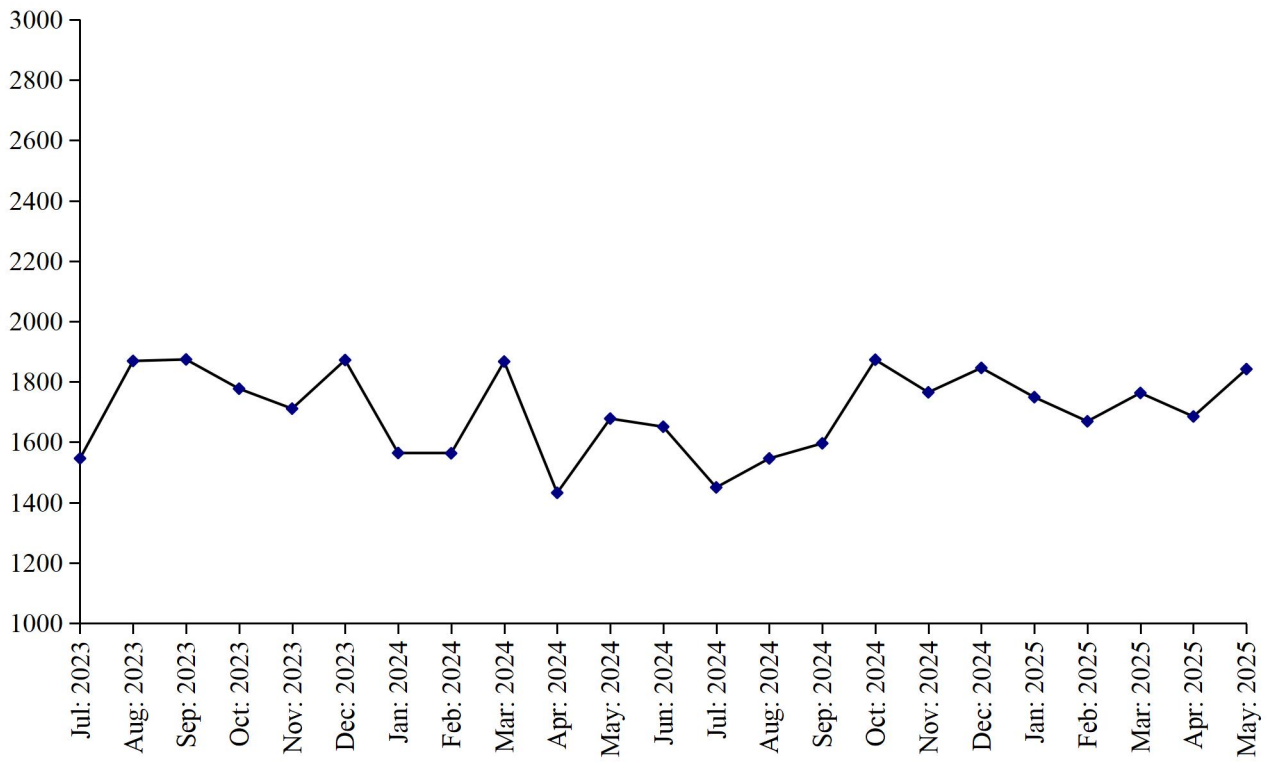


Table No.22 DETAIL OF PRODUCTION, CONSUMPTION AND STOCK OF CLINKER.*(M.Tons)*

Year (July-June)/ Month	No. Of reporting Units	Stock at the Beginning	Production	Consumption	Stock at the end
2008-09	13	397777	14275929	13996684	677022
2009-10	13	677022	15438372	15593172	522222
2010-11	13	522222	14340746	13920004	942964
2011-12	13	942964	13937197	13851368	1028793
2012-13	12	1028793	15210981	14730923	1508851
2013-14	12	1508851	15780981	15535319	1754513
2014-15	12	1754513	15926314	15853807	1827020
2015-16	12	1827020	15973852	17140392	660480
2016-17	12	660480	19101688	18498074	1264094
2017-18	12	1264094	20080615	19767345	1577364
2018-19	12	1577364	18892935	18992061	1478238
2019-20	12	1478238	19838457	19197793	2118902
2020-21	12	2118902	21735282	21668097	2186087
2021-22	12	2186087	22442834	22063309	2565612
2022-23	12	2251510	19792339	19864127	2179722
2023-24	12	2179722	17353831	17763049	1770504
(Jul: - May:)	<u>12</u>	<u>2179722</u>	<u>15720792</u>	<u>16438812</u>	<u>1461702</u>
Jul:	12	2179722	1755582	1288545	2646759
Aug:	12	2646759	1301811	1601107	2347463
Sep:	12	2347463	1558920	1635401	2270982
Oct:	12	2270982	1647523	1656235	2262270
Nov:	12	2262270	1394661	1498822	2158109
Dec:	12	2158109	1591750	1627574	2122285
Jan:	12	2122285	1585141	1323839	2383587
Feb:	12	2383587	1115204	1320396	2178395
Mar:	12	2178395	1718283	1610476	2286202
Apr:	12	2286202	900058	1210841	1975419
May:	12	1975419	1151859	1665576	1461702
Jun:	12	1461702	1633039	1324237	1770504
<u>2024-25</u>					
(Jul: - May:)	<u>11</u>	<u>1770504</u>	<u>15754317</u>	<u>16118307</u>	<u>1406514</u>
Jul:	11	1770504	1108415	1201412	1677507
Aug:	11	1677507	1375146	1328510	1724143
Sep:	11	1724143	1255231	1460985	1518389
Oct:	11	1518389	1664866	1641220	1542035
Nov:	11	1542035	1691967	1495868	1738134
Dec:	11	1738434	1430184	1632683	1535635
Jan:	11	1535635	1250397	1491025	1295007
Feb:	11	1295007	1643585	1434868	1503724
Mar:	11	1503724	1387621	1537238	1354107
Apr:	11	1354107	1465123	1246384	1572846
May:	11	1572846	1481782	1648114	1406514

Table No.23 DETAIL OF PRODUCTION, SALE AND STOCK OF CEMENT

(M.Tons)

Year (July- June)/ Month	No. Of Reporting Units	Stock at the beginning	Production	S O L D			Stock at the end
				Total	Within country	Export- ed	
2008-09	13	91271	14227580	14068486	14068486	-	250365
2009-10	13	250365	16951531	16973086	16973086	-	228810
2010-11	13	228810	14685518	14528966	14528966	-	385362
2011-12	13	385362	15269328	15299852	15299852	-	354838
2012-13	12	354838	15929819	15922363	15922363	-	362294
2013-14	12	362294	16668915	16472689	16472689	-	558520
2014-15	12	558520	17175158	17358446	17358446	-	375232
2015-16	12	375232	18479957	18588721	18588721	-	266468
2016-17	12	266468	19569160	19445145	19445145	-	390483
2017-18	12	390483	22067871	22188484	22188484	-	269870
2018-19	12	269870	21077461	20903996	20903996	-	443335
2019-20	12	443335	20386575	20021979	20021979	-	807931
2020-21	12	807931	24535481	24360442	24360442	-	982970
2021-22	12	982970	25551134	25220928	25220928	-	1313176
2022-23	12	1313176	22316924	22263250	22263250	-	1366850
2023-24	12	1366850	20380376	20362441	20362441	-	1384785
(Jul: - May:)	12	1366850	1677744	1834599	1834599	=	1418036
Jul:	12	1366850	1545757	1495974	1495974	-	1416633
Aug:	12	1416633	1868539	1887634	1887634	-	1397538
Sep:	12	1397538	1873939	1789233	1789233	-	1482244
Oct:	12	1482244	1777130	1712812	1712812	-	1546562
Nov:	12	1546562	1711240	1712369	1712369	-	1545433
Dec:	12	1545433	1871814	1831915	1831915	-	1585332
Jan:	12	1585332	1563532	1571862	1571862	-	1577002
Feb:	12	1577002	1540846	1563253	1563253	-	1554595
Mar:	12	1554595	1866972	1836400	1836400	-	1585167
Apr:	12	1585167	1432101	1442377	1442377	-	1574891
May:	12	1574891	1677744	1834599	1834599	-	1418036
Jun:	12	1418036	1650762	1684013	1084013	-	1384785
2024 - 25							
(Jul: - May:)	11	1384785	18784789	18969019	18969019	=	1200555
Jul:	11	1384785	1449889	1409990	1409990	-	1424684
Aug:	11	1424684	1546040	1568924	1568924	-	1401800
Sep:	11	1401800	1596184	1617710	1617710	-	1380274
Oct:	11	1380274	1873163	1837102	1837102	-	1416335
Nov:	11	1416335	1765037	1829748	1829748	-	1351624
Dec:	11	1351624	1846320	1836514	1836514	-	1361430
Jan:	11	1361430	1749116	1780924	1780924	-	1329622
Feb:	11	1329622	1668633	1691014	1691014	-	1307241
Mar:	11	1307241	1763106	1702449	1702449	-	1367898
Apr:	11	1367898	1685463	1705146	1705146	-	1348215
May:	11	1348215	1841838	1989498	1989498	-	1200555

Table No.24 EMPLOYMENT AND WAGES/SALARIES OF CEMENT INDUSTRY

Year (July-June)/ Month	No. Of Reporting Units	EMPLOYMENT (No)*			WAGES/SALARIES (000 Rs.)	
		Total	Production Workers	Non-Production Workers	Total	Production Workers
2008-09	13	5858	3906	1952	137089	755759
2009-10	13	6272	4292	1980	157409	80564
2010-11	13	6713	4631	2082	177979	94502
2011-12	13	6614	4729	1885	195861	115717
2012-13	12	6463	4591	1872	226498	135792
2013-14	12	6593	4648	1945	241852	140576
2014-15	12	6767	4817	1950	301847	178187
2015-16	12	7046	5009	2037	384190	222124
2016-17	12	7627	5178	2448	521509	292515
2017-18	12	8033	5262	2771	729712	399586
2018-19	12	8077	5360	2717	668155	384602
2019-20	12	7988	5400	2588	634682	387052
2020-21	12	7912	5328	2583	661961	405863
2021-22	12	7969	5325	2644	717914	438054
2022-23	12	7394	4514	2880	668006	366140
2023-24	12	7353	4335	3018	785991	399350
(Jul: - May:)	12	7346	4343	3003	784986	401677
Jul:	12	7135	4416	2719	712882	379167
Aug:	12	7298	4346	2952	795629	412115
Sep:	12	7314	4359	2955	774383	404138
Oct:	12	7310	4351	2959	793464	419529
Nov:	12	7309	4342	2967	785894	407272
Dec:	12	7278	4325	2953	779116	404152
Jan:	12	7428	4423	3005	800427	437245
Feb:	12	7425	4416	3009	802452	433885
Mar:	12	7436	4263	3173	799015	376211
Apr:	12	7434	4265	3169	795162	371536
May:	12	7436	4262	3174	796420	373201
Jun:	12	7433	4256	3177	797048	373752
2024 - 25						
(Jul: - May:)	11	7456	4347	3108	853006	423951
Jul:	11	7422	4249	3173	799199	373700
Aug:	11	7420	4246	3174	863143	407702
Sep:	11	7490	4374	3116	880073	551575
Oct:	11	7457	4356	3111	875651	427005
Nov:	11	7501	4399	3102	856606	416261
Dec:	11	7493	4387	3106	862047	418083
Jan:	11	7474	4385	3089	850186	414207
Feb:	11	7466	4375	3091	847149	415118
Mar:	11	7442	4358	3084	847471	413587
Apr:	11	7422	4356	3066	848202	410790
May:	11	7425	4345	3080	853336	415432

* = Monthly average over the eleven month.

PERFORMANCE OF FERTILIZER INDUSTRY

Report for the month of May 2025

Coverage

This report covers Seven (07) fertilizer factories in the Punjab Province.

Production

These factories produced 333875 Metric Tons of Urea, 0 Metric Tons of Super Phosphate, 69068 Metric Tons of Amm. Nitrate and 65778 Metric Tons of Nitro Phosphate. The overall production of Fertilizer during the month was 0.2% higher than the last month.

Sale and Stock

These fertilizer factories reported a sale of 285585 Metric Tons of Urea, 0 Metric Tons of Super phosphate, 69068 Metric Tons of Amm. Nitrate and 65878 Metric Tons of Nitro Phosphate. The stock of Urea, Super Phosphate, Amm. Nitre and Nitro Phosphate at the end of the month was 390763, 0, 4430 and 8289 Metric Tons respectively.

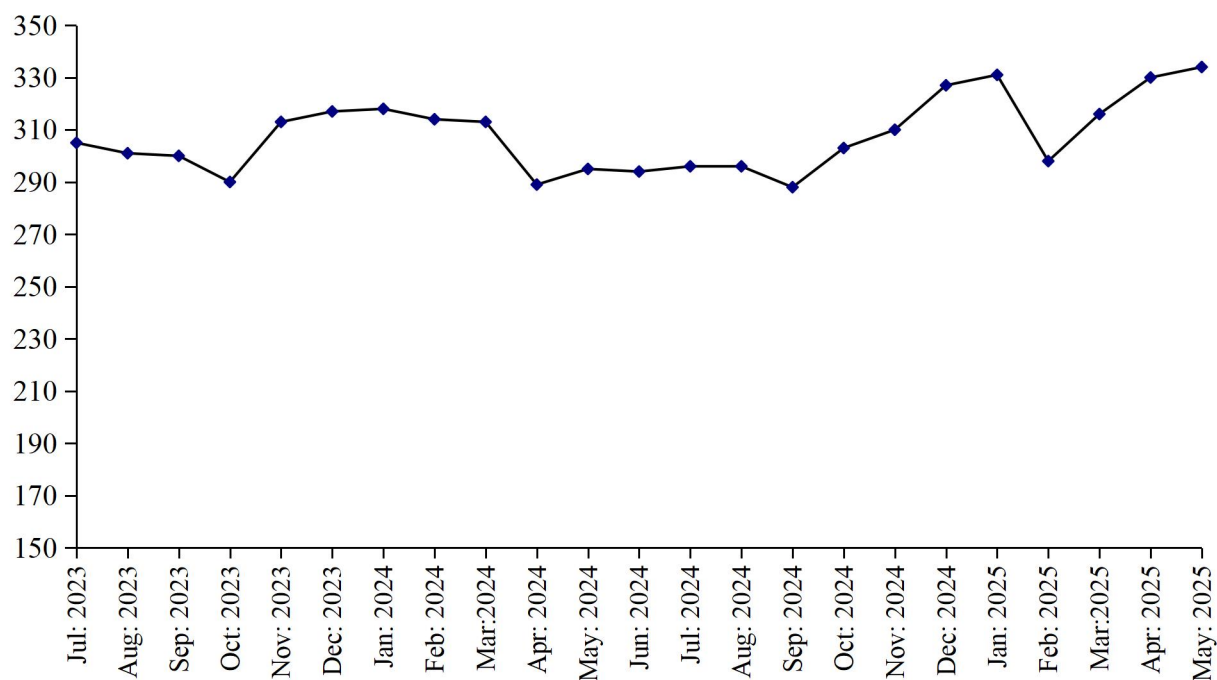
Employment and Wages/Salaries

Total employment during the month was 5542 which was same as the last month. Out of this total employment 3493 were production workers. Total Wages/Salaries for the month under report were amounted to 1215 Million Rupees.

PRODUCTION OF UREA

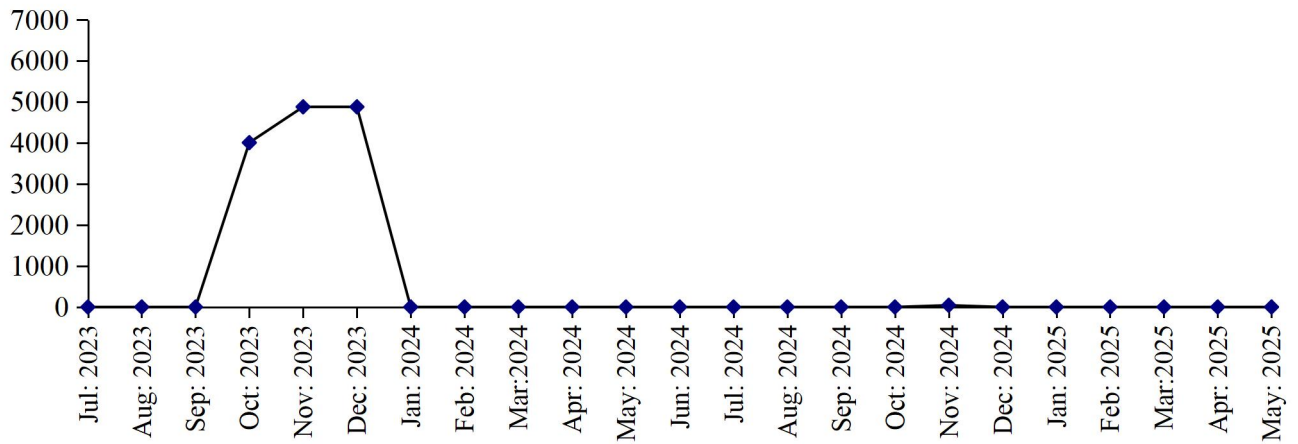
July 2023 to May 2025

(000 M. Tons)



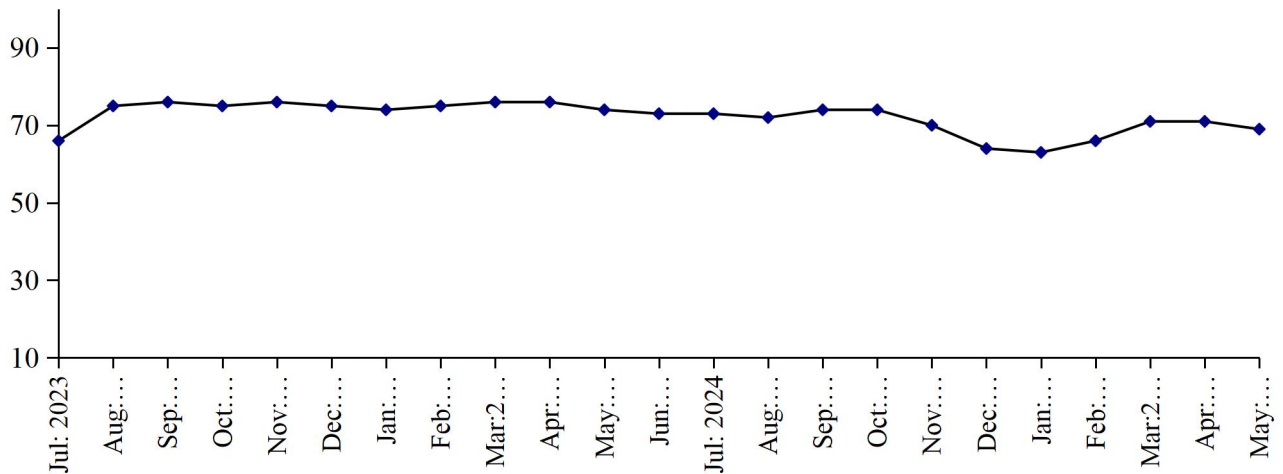
PRODUCTION OF SUPER PHOSPHATE

(000 M. Tons) July 2023 to May 2025



PRODUCTION OF AMM. NITRATE

(000 M. Tons) July 2023 to May 2025



PRODUCTION OF NITRO PHOSPHATE

(000 M. Tons) July 2023 to May 2025

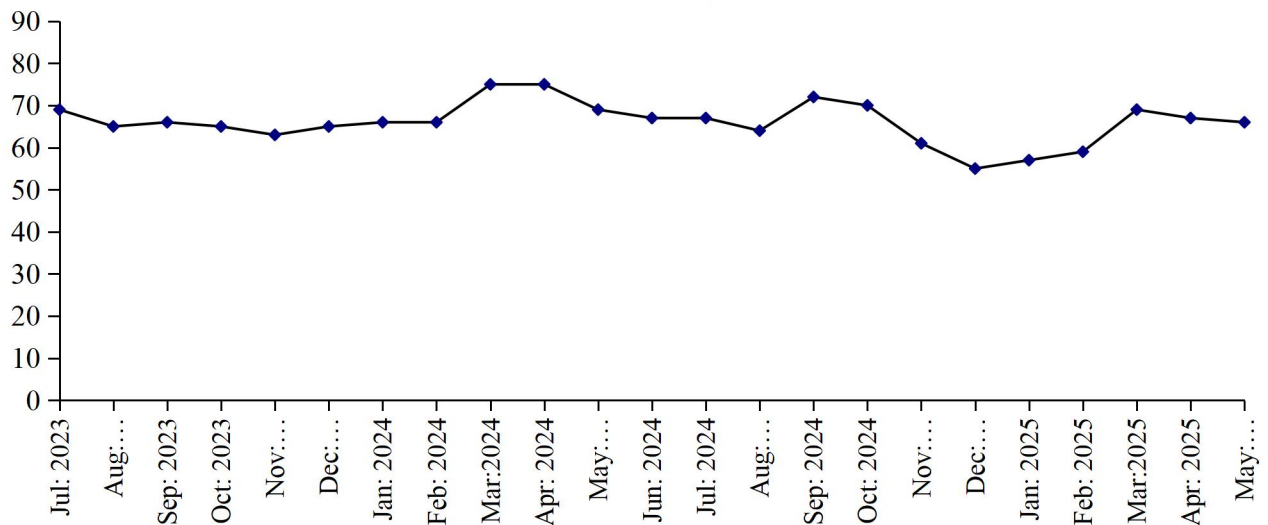


Table No: 25 DETAIL OF PRODUCTION, SALE AND STOCK OF UREA AND AMM. SULPHATE

(M. Tons)

Year (July-June)/ Month	U R E A			AMM. SULPHATE		
	Production	Sale	Stock at The end	Production	Sale	Stock at the end
2008-09	3377275	3404025	15570	-	-	-
2009-10	3431545	3374056	73059	-	-	-
2010-11	3016783	3064387	25455	-	-	-
2011-12	2750392	2701061	74786	-	-	-
2012-13	2592718	2639313	28191	-	-	-
2013-14	2582330	2539991	70530	-	-	-
2014-15	2459980	2505550	24960	-	-	-
2015-16	2856143	2392405	488698	-	-	-
2016-17	2808518	2895909	401307	-	-	-
2017-18	2987690	3367935	21062	-	-	-
2018-19	3181203	3133449	68816	-	-	-
2019-20	3201765	3251695	18886	-	-	-
2020-21	3268768	3132828	154826	-	-	-
2021-22	3381465	3514260	22031	-	-	-
2022-23	3280655	3190837	111849	-	-	-
2023-24	3648810	3682460	111849	-	-	-
(Jul: - May:)	<u>3354589</u>	<u>3400493</u>	<u>65945</u>	=	=	=
Jul:	305490	333356	83983	-	-	-
Aug:	300678	334262	50399	-	-	-
Sep:	299915	318181	32133	-	-	-
Oct:	289556	288661	33028	-	-	-
Nov:	312546	310221	35353	-	-	-
Dec:	317452	315365	37440	-	-	-
Jan:	318002	315621	39821	-	-	-
Feb:	314235	313209	40847	-	-	-
Mar:	313174	324125	29896	-	-	-
Apr:	289034	290434	28496	-	-	-
May	294507	257058	65945	-	-	-
Jun:	294221	281967	78199	-	-	-
<u>2024-25</u>						
(Jul: - May:)	<u>3429385</u>	<u>3116841</u>	<u>390663</u>	=	=	=
Jul:	296039	278614	956624	-	-	-
Aug:	295790	282514	108900	-	-	-
Sep:	287823	250080	146643	-	-	-
Oct:	303257	204790	245110	-	-	-
Nov:	309811	264608	290313	-	-	-
Dec:	327454	517592	100175	-	-	-
Jan:	331403	403055	28523	-	-	-
Feb:	298097	254885	71735	-	-	-
Mar:	315869	277757	109847	-	-	-
Apr:	329967	97361	342453	-	-	-
May:	333875	285585	390663	-	-	-

Table No:26 DETAIL OF PRODUCTION, SALE AND STOCK OF SUPER PHOSPHATE AND AMM. NITRATE
(M. Tons)

Year (July-June)/ Month	SUPER PHOSPHATE			AMM. NITRATE		
	Production	Sale	Stock at The end	Production	Sale	Stock at the end
2008-09	89171	75025	26904	344334	339921	4421
2009-10	46952	56524	17332	345735	330963	19193
2010-11	126909	137940	6301	298029	307696	9526
2011-12	123294	90442	39153	228664	227808	10382
2012- 13	44638	42997	40794	26574	36898	58
2013-14	10081	29493	21382	119631	119539	150
2014-15	18706	25502	14586	113541	65804	47887
2015-16	28023	33404	9205	237844	169639	116092
2016-17	23815	9546	23474	226183	328008	14267
2017-18	1027	23807	694	553091	532829	34529
2018-19	18244	18828	110	456249	487629	3149
2019-20	9034	9122	22	548571	544771	6949
2020-21	31087	28244	2865	756461	762169	1241
2021-22	28780	25353	6292	821680	819768	3153
2022-23	6884	5356	7820	799008	800476	1685
2023-24	4007	10145	5	892412	889500	4597
(Jul: - May:)	<u>4007</u>	<u>11817</u>	<u>10</u>	<u>819231</u>	<u>820175</u>	<u>741</u>
Jul:	-	991	6829	66126	66126	1685
Aug:	-	1776	5053	75261	75606	1340
Sep:	-	500	4553	76191	76796	735
Oct:	4007	4033	4527	75159	75159	735
Nov:	-	4125	402	75899	75938	696
Dec:	-	100	302	74587	74628	655
Jan:	-	200	102	74180	74115	720
Feb:	-	46	56	75111	75046	785
Mar:	-	-	56	76112	73303	3594
Apr:	-	30	26	76085	78914	765
May	-	16	10	74520	74544	741
Jun:	-	5	5	73181	69325	4597
<u>2024- 25</u>						
(Jul: - May:)	<u>42</u>	<u>42</u>	<u>5</u>	<u>765918</u>	<u>766085</u>	<u>4430</u>
Jul:	0	5	5	72885	68925	8557
Aug:	0	0	5	71557	69056	11058
Sep:	0	0	5	74438	83440	2056
Oct:	0	0	5	74787	74300	2543
Nov:	42	42	5	69572	69085	3030
Dec:	0	0	5	63844	62444	4430
Jan:	0	0	5	62600	62600	4430
Feb:	0	0	5	65667	65667	4430
Mar:	0	0	5	71000	71000	4430
Apr:	0	0	5	70500	70500	4430
May:	0	0	5	69068	69068	4430

Table No: 27 DETAIL OF PRODUCTION, SALE AND STOCK OF NITRO PHOSPHATE.

(M.Tons)

Year (July-June)/ Month	Production	Sale	Stock at the end
2008-09	305678	362938	4771
2009-10	304444	286441	22774
2010-11	265490	287894	370
2011-12	198799	198818	351
2012- 13	22109	22460	0
2013-14	122494	122478	16
2014-15	101171	93467	7720
2015-16	221059	228779	0
2016-17	274512	269570	4942
2017-18	455002	459944	0
2018-19	449667	449667	0
2019-20	624396	615632	8764
2020-21	845493	846511	7746
2021-22	835140	832990	9896
2022-23	770063	778152	1807
2023-24	814083	810751	5139
(Jul: - May:)	<u>747008</u>	<u>748693</u>	<u>122</u>
Jul:	69499	69248	2058
Aug:	65135	66324	869
Sep:	66055	65963	961
Oct:	65297	65963	295
Nov:	63254	63523	26
Dec:	65471	65274	223
Jan:	65999	65802	420
Feb:	66197	66000	617
Mar:	75421	72618	3420
Apr:	75419	78343	496
May:	69261	69635	122
June:	67075	62058	5139
<u>2024 - 25</u>			
(Jul: - May:)	<u>707394</u>	<u>704244</u>	<u>8289</u>
Jul:	66806	61351	10594
Aug:	64206	60751	14049
Sep:	71847	82224	3672
Oct:	69944	70124	3492
Nov:	60922	59456	4958
Dec:	55305	54840	5423
Jan:	57267	55684	7006
Feb:	58888	57305	8589
Mar:	69000	69100	8489
Apr:	67431	67531	8389
May:	65778	65878	8289

Table No: 28 EMPLOYMENT AND WAGES/SALARIES OF FERTILIZER INDUSTRY*

Year (July-June) / Month	No. Of Working Units	E M P L O Y M E N T (Nos.)*			WAGES/SALARIES (000 Rs.)	
		Total	Production Workers	Office Staff	Total	Production Workers
2008-09	5	4710	3316	1394	209439	132521
2009-10	5	4878	3388	1490	273098	166113
2010-11	6	5161	3496	1665	310502	181462
2011-12	6	5407	3671	1736	353344	207054
2012-13	6	5136	3469	1667	363237	210167
2013-14	6	4720	3121	1599	395486	224472
2014-15	6	5090	3015	2075	433858	222449
2015-16	6	5473	3070	2403	489752	235912
2016-17	6	5260	3045	2215	494139	260682
2017-18	7	6020	3616	2404	545307	287497
2018-19	7	6141	3663	2478	573893	295543
2019-20	7	5714	3443	2270	600079	321309
2020-21	7	5700	3590	2110	638195	355515
2021-22	7	5567	3647	1920	743477	417103
2022-23	7	5475	3516	1959	938617	494865
2023-24	7	5469	3448	2021	1315012	620419
(Jul: - May:)	<u>7</u>	<u>5465</u>	<u>3437</u>	<u>2028</u>	<u>1294313</u>	<u>573220</u>
Jul:	7	5395	3413	1983	1025644	451525
Aug:	7	5396	3412	1984	1040464	546108
Sep:	7	5400	3416	1984	1040646	546108
Oct:	7	5450	3414	2036	1040604	546108
Nov:	7	5460	3417	2043	1042908	547200
Dec:	7	5465	3420	2045	1492000	599212
Jan:	7	5507	3464	2043	1495587	611439
Feb:	7	5504	3435	2069	1498922	614129
Mar:	7	5505	3470	2035	1500010	614300
Apr:	7	5510	3478	2032	1530327	614500
May	7	5515	3480	2035	1530334	614789
Jun:	7	5524	3484	2040	1533548	615800
<u>2024 - 25</u>						
(Jul: - May:)	<u>7</u>	<u>5527</u>	<u>3484</u>	<u>2043</u>	<u>1158448</u>	<u>621056</u>
Jul:	7	5520	3481	2039	1065669	542970
Aug:	7	5522	3484	2038	1066007	543100
Sep:	7	5520	3481	2039	1067100	544200
Oct:	7	5525	3482	2043	1067623	544967
Nov:	7	5527	3481	2046	1203000	650019
Dec:	7	5526	3481	2045	1209446	652166
Jan:	7	5528	3482	2046	1210096	670200
Feb:	7	5527	3481	2046	1212000	670400
Mar:	7	5523	3489	2034	1212999	670700
Apr:	7	5540	3492	2031	1214000	671200
May:	7	5542	3493	2049	1214995	671700

* = Monthly averages over the eleven month..

PERFORMANCE OF FOOTWEAR INDUSTRY

Report for the month of May 2025

Coverage

This report covers Forty One (41) factories of Footwear Industry in the Punjab Province.

Production

The factories produced 3146 thousand Pairs of Footwear during the current month, which was 0.6% lower than the previous month.

Employment

Total employment in these factories during the current month was 12772, which was 0.1% lower than the previous month. Out of this total employment, 9328 were production workers.

PRODUCTIN OF FOOTWEAR

July 2023 to May 2025

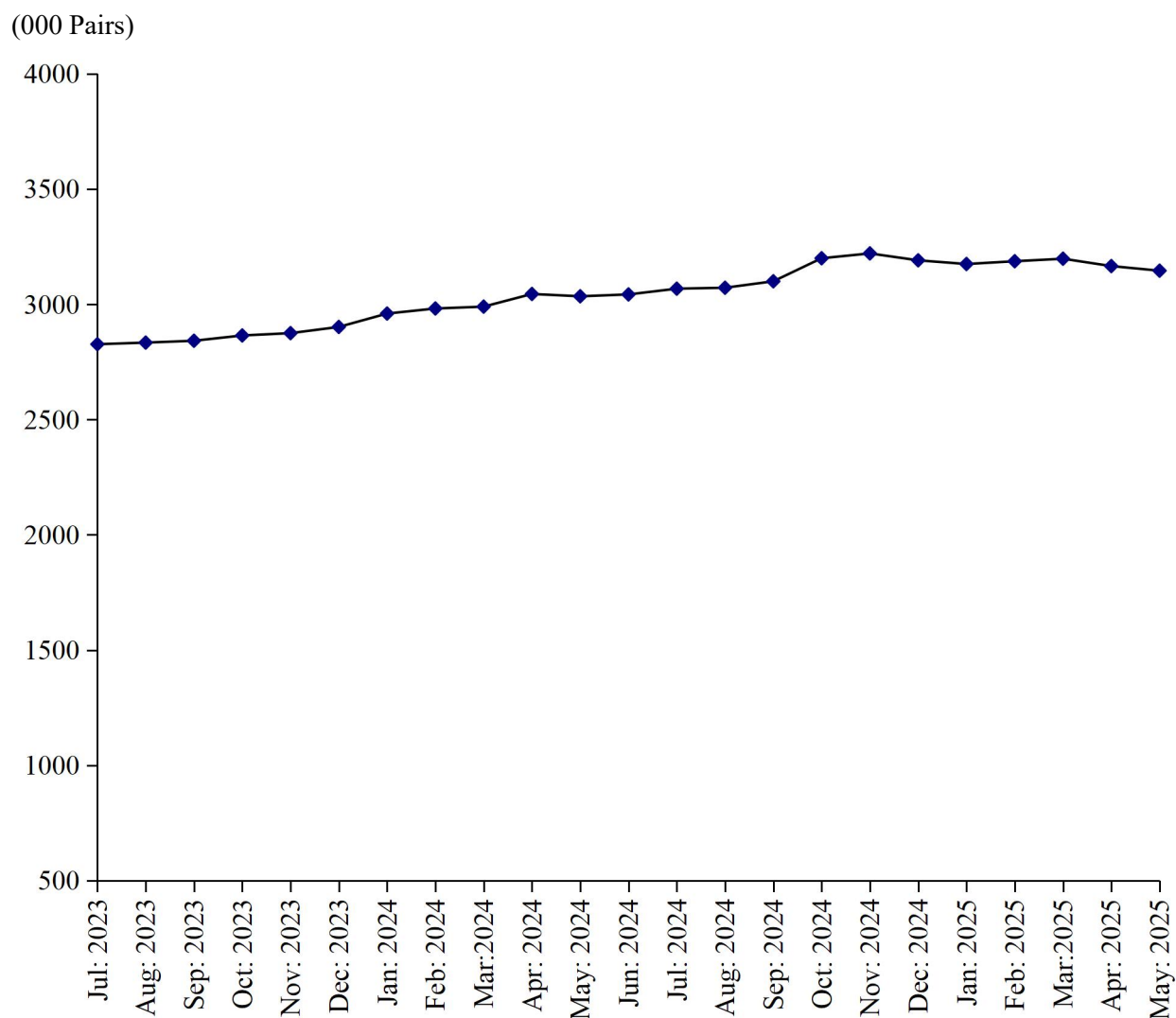


Table No.29 MANUFACTURING ACTIVITY OF FOOTWEAR INDUSTRY

Year (July-June)/ Month	No. Of Reporting Units	Production Of Footwear (000) Pairs)	EMPLOYMENT (NOS.) *	
			Total	Production Workers
2008-09	16	30979	8521	7038
2009-10	16	34817	8667	7152
2010-11	40	41008	9699	8116
2011-12	40	41944	9719	8535
2012-13	40	43232	9997	8536
2013-14	40	45030	9967	7937
2014-15	40	55136	9523	7398
2015-16	40	60462	10350	7959
2016-17	41	45476	9778	7401
2017-18	41	37411	9758	7477
2018-19	41	38805	9844	7783
2019-20	41	37860	10346	8451
2020-21	41	25658	10158	7745
2021-22	41	29843	11939	9145
2022-23	41	32298	12422	9367
2023-24	41	35200	12648	9357
(Jul: - May:)	<u>41</u>	<u>32157</u>	<u>11601</u>	<u>9361</u>
Jul:	41	2827	12467	9342
Aug:	41	2834	12467	9342
Sep:	41	2842	12567	9348
Oct:	41	2865	12575	9351
Nov:	41	2875	12580	9360
Dec:	41	2902	12690	9375
Jan:	41	2960	12693	9378
Feb:	41	2982	12693	9378
Mar:	41	2990	12693	9378
Apr:	41	3045	12795	9392
May	41	3035	12790	9332
June	41	3043	12770	9313
<u>2024-25</u>				
(Jul: - May:)	<u>41</u>	<u>34724</u>	<u>12803</u>	<u>9351</u>
July	41	3068	12775	9320
Aug:	41	3072	12816	9362
Sep:	41	3100	12818	9364
Oct:	41	3200	12821	9366
Nov:	41	3221	12826	9368
Dec:	41	3191	12813	9362
Jan:	41	3175	12803	9352
Feb:	41	3187	12803	9352
Mar:	41	3198	12803	9352
Apr:	41	3166	12780	9335
May:	41	3146	12772	9328

* = Monthly Average over the eleven month.

PERFORMANCE OF LEATHER TANNING INDUSTRY

Report for the month of May 2025

Coverage

The report for the month covers one Hundred and Six (106) Tanneries working in the Punjab Province.

Production

These Tanneries produced 762 thousand Sq. Mtrs. of Upper Leather and 16 M. Tons of Sole Leather during the current month. The Production of Upper Leather during the month was 1.2% higher than the previous month.

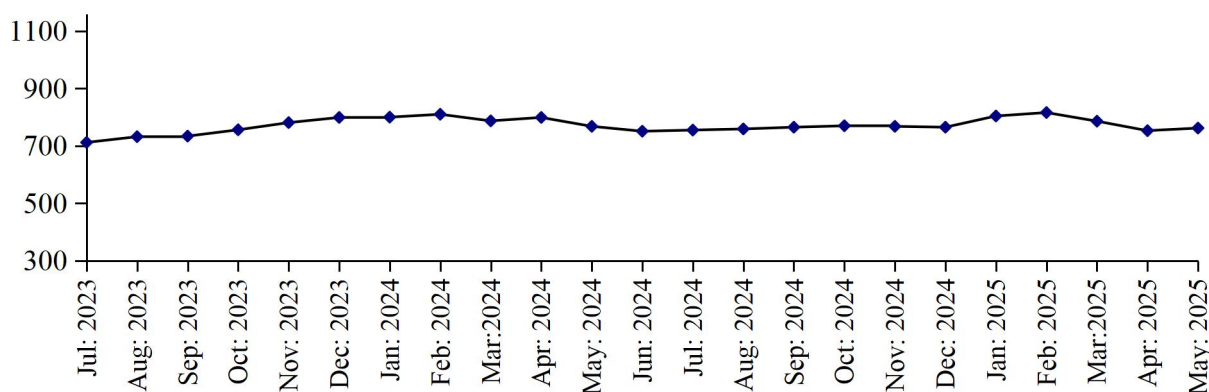
Employment

Total employment in these factories was 2231 persons which was 0.1% higher than the last month. Out of this total employment 1566 persons were production workers.

PRODUCTION OF UPPER LEATHER

July 2023 to May 2025

(000 Sq. Mtrs)



PRODUCTION OF SOLE LEATHER

July 2023 to May 2025

(000 M. Tons)

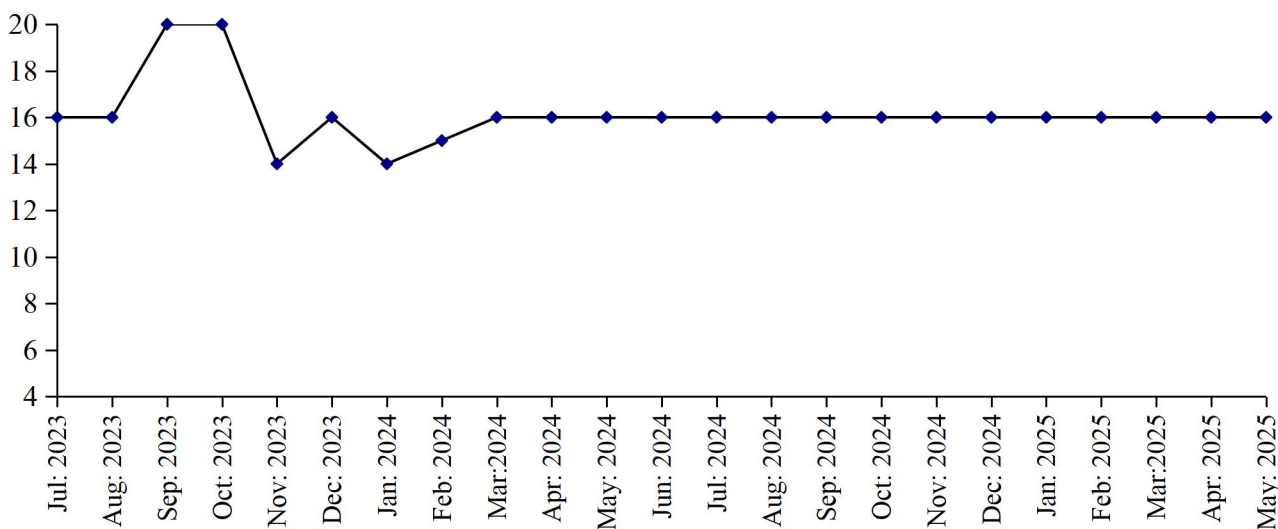


Table No: 30: MANUFACTURING ACTIVITY OF LEATHER TANNING INDUSTRY

Year (July-June) / Month	No. Of Reporting Units	P R O D U C T I O N		EMPLOYMENT (NOS.) *	
		Upper Leather (000 Sq. Mtrs)	Sole Leather (M. Tons)	Total	Production Workers
2008-09	19	5980	156	1195	910
2009-10	60	10465	215	1711	1325
2010-11	100	12999	381	2234	1813
2011-12	100	11154	417	2133	1709
2012-13	100	10169	356	1824	1318
2013-14	100	10766	287	2404	1703
2014-15	100	10071	241	2539	1821
2015-16	100	9563	198	2550	1935
2016-17	106	10330	156	2956	2174
2017-18	107	11150	168	3071	2248
2018-19	107	11045	168	2938	2135
2019-20	108	9340	168	2787	2006
2020-21	108	7956	168	2467	1755
2021-22	106	8852	176	2261	1591
2022-23	106	9622	192	2245	1612
2023-24	106	9229	195	2315	1640
(Jul: - May:)	<u>106</u>	<u>8478</u>	<u>179</u>	<u>2314</u>	<u>1639</u>
Jul:	106	712	16	2273	1594
Aug:	106	732	16	2293	1610
Sept:	106	734	20	2302	1621
Oct:	106	756	20	2317	1640
Nov:	106	781	14	2320	1648
Dec:	106	799	16	2328	1653
Jan:	106	800	14	2326	1652
Feb:	106	810	15	2326	1652
Mar:	106	787	16	2326	1652
Apr:	106	799	16	2328	1653
May	106	768	16	2313	1650
Jun:	106	751	16	2315	1650
<u>2023-24</u>					
(Jul: - May:)	<u>106</u>	<u>8503</u>	<u>176</u>	<u>2314</u>	<u>1661</u>
Jul:	106	755	16	2328	1675
Aug:	106	759	16	2330	1687
Sep:	106	765	16	2340	1690
Oct:	106	770	16	2342	1692
Nov:	106	768	16	2340	1690
Dec:	106	765	16	2344	1694
Jan:	106	804	16	2305	1657
Feb:	106	816	16	2330	1676
Mar:	106	786	16	2330	1676
Apr:	106	753	16	2229	1564
May:	106	762	16	2231	1566

* = Monthly average over the eleven month.

PERFORMANCE OF PAPER & PAPER BOARD INDUSTRY

Report for the month of May 2025

Coverage

This report covers forty seven (47) factories of Paper & Paper Board Industries in the Punjab Province.

Production

Forty seven factories produced 20521 Metric Tons of paper, which comprises of 8234 Metric Tons of writing, 6814 Metric Tons of printing and 5473 Metric Tons of packing and other 34530 Metric Tons of paper board during the month. The production of paper and paper board was 17.5% higher and 8.2% lower than the last month respectively.

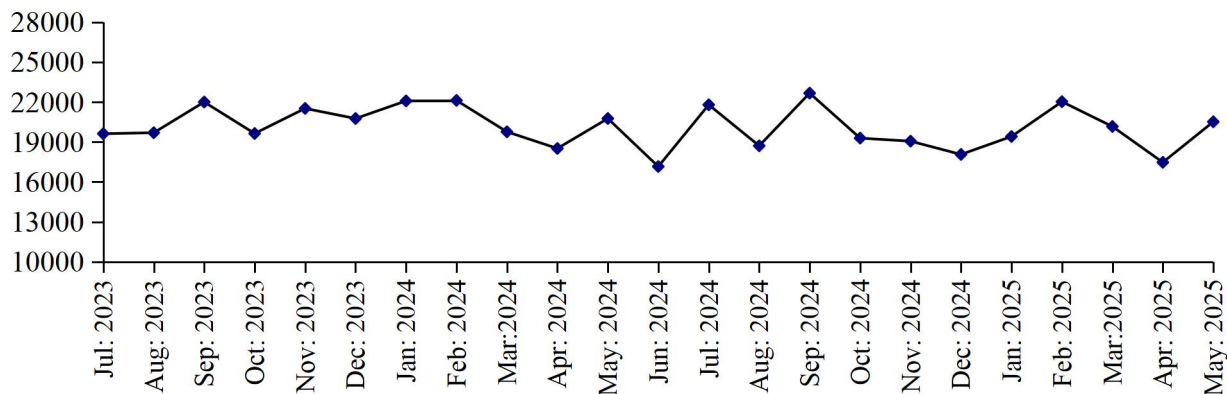
Employment

Total employment during the month was 4799 persons, which was 0.3% lower the last month. Out of this total employment, 3507 were production workers.

PRODUCTION OF PAPER & PAPER BOARD

July 2023 to May 2025

(M. Tons)



(M. Tons)

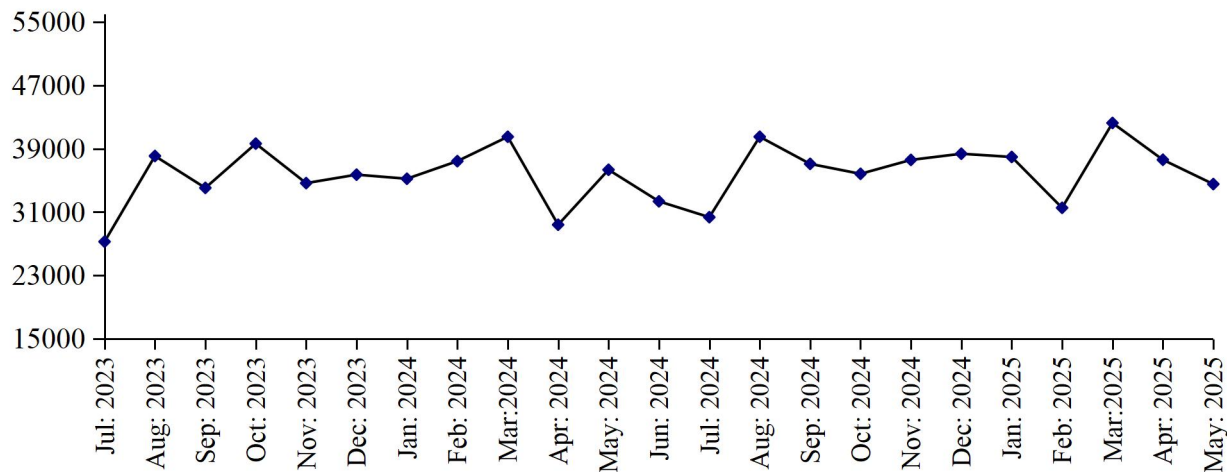


Table No: 31 MANUFACTURING ACTIVITY OF PAPER & PAPER BOARD INDUSTRY.

Year (July-June)/ Month	No. Of Reporting Units	P R O D U C T I O N (M.Tons)			EMPLOYMENT (NOS.) *	
		Paper	Paper Board	Paper & Paper Board	Total	Production Workers
2008-09	34	244838	165797	410635	5835	4845
2009-10	41	240775	165269	406044	5398	4178
2010-11	41	220587	194084	414671	5787	3945
2011-12	41	236217	287645	523862	5403	3539
2012-13	43	218980	376138	595118	5702	3774
2013-14	43	205252	457794	663046	6031	4053
2014-15	46	190193	407658	597851	6086	4370
2015-16	50	219040	370427	589467	6169	4629
2016-17	49	226251	398950	625201	6065	4614
2017-18	48	237723	451717	689440	6130	4570
2018-19	47	225544	429716	655260	5567	4052
2019-20	47	220495	441640	662135	5112	3683
2020-21	47	191962	488542	680504	5101	3660
2021-22	47	204434	526353	730787	5026	3600
2022-23	47	232450	438353	670803	5102	3653
2023-24	47	243683	420773	664456	5111	3682
(Jul – May:)	<u>47</u>	<u>226527</u>	<u>388420</u>	<u>614947</u>	<u>5128</u>	<u>3697</u>
Jul:	47	19625	27261	46886	5109	3688
Aug:	47	19697	38076	57773	5402	3838
Sep:	47	22007	34049	56056	5108	3688
Oct:	47	16640	39637	59277	5114	3693
Nov:	47	21525	34653	56178	5104	3686
Dec:	47	20765	35720	56485	5107	3680
Jan:	47	22090	35205	57295	5112	3697
Feb:	47	22128	37425	59553	5112	3697
Mar:	47	19769	40520	60289	5103	3691
Apr:	47	18516	29400	47916	5082	3659
May	47	20765	36474	57239	5056	3650
Jun:	47	17156	32353	49509	4919	3515
<u>2024-25</u>						
(Jul – May:)	<u>47</u>	<u>219217</u>	<u>403568</u>	<u>622785</u>	<u>4891</u>	<u>3514</u>
Jul:	47	21800	30352	52152	4916	3515
Aug:	47	18715	40502	59217	4889	3489
Sep:	47	22675	37083	59758	5023	3624
Oct:	47	19292	35825	55117	4961	3560
Nov:	47	19063	37582	56645	5023	3624
Dec:	47	18065	38362	56427	4792	3393
Jan:	47	19414	37954	57368	4788	3390
Feb:	47	22032	31535	53567	4900	3501
Mar:	47	20168	42244	62412	4896	3496
Apr:	47	17472	37599	55071	4813	3534
May:	47	20521	34530	55051	4799	3524

* = Monthly average over the eleven month.

PERFORMANCE OF LIGHT ENGINEERING INDUSTRY

Report for the month of May 2025

RE-ROLLED STEEL

Coverage

This report covers Forty One (41) factories of Re-Rolled Steel in the Punjab Province.

Production

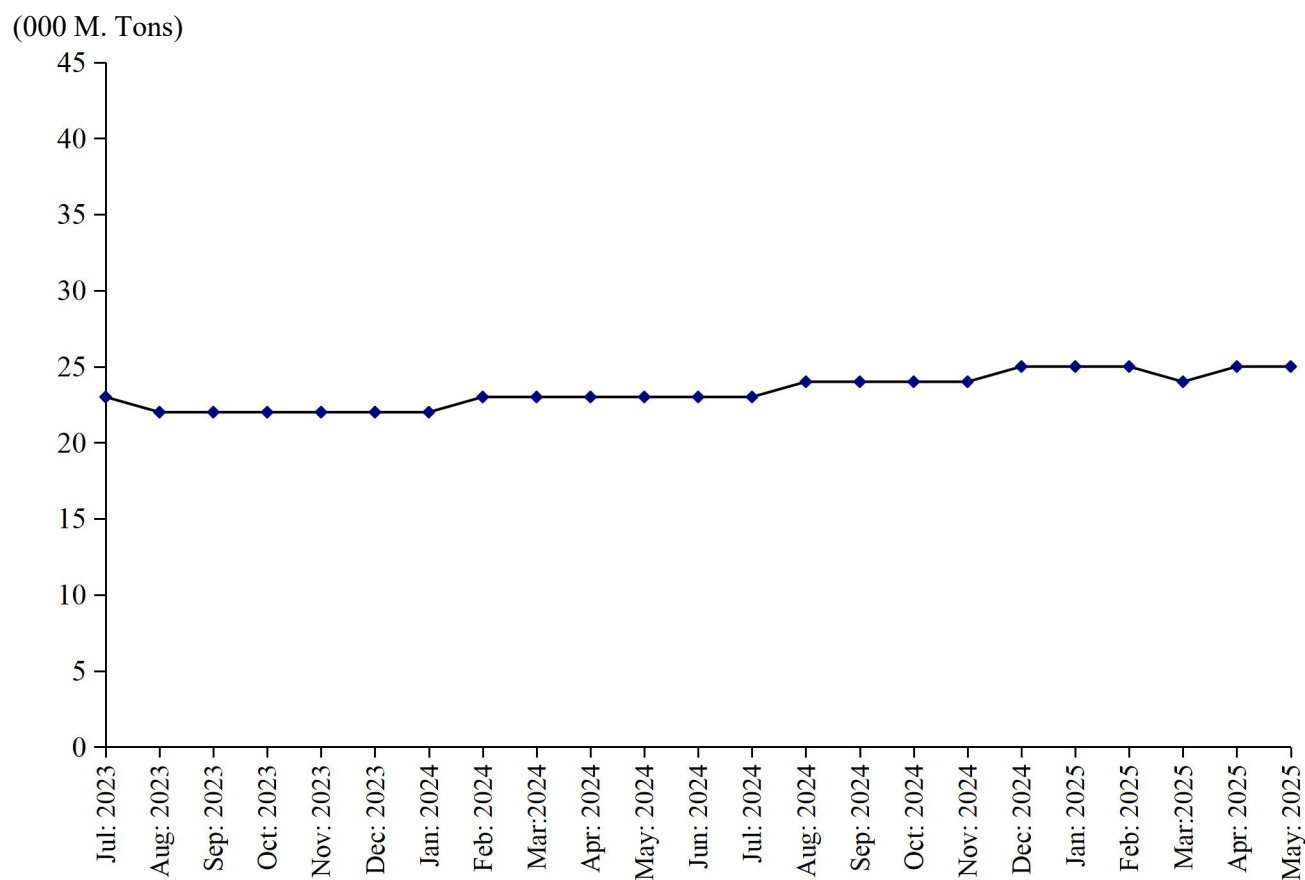
Forty one factories covered under the survey produced 24613 Metric Tons of steel bars/angles during May 2025, which was 0.4% lower than the last month.

Employment

Total employment in the industry during the month was 1113, which was 0.1% higher than the last month. Out of this total employment, 805 were production workers.

PRODUCTION OF RE-ROLLED STEEL

July 2023 to May 2025



BICYCLES

Coverage

This report covers three (3) factories of Bicycles in the Punjab.

Production

Three factories being covered in the survey manufactured and assembled 14599 complete bicycles during May 2025, which was 0.8% lower than the last month.

Employment

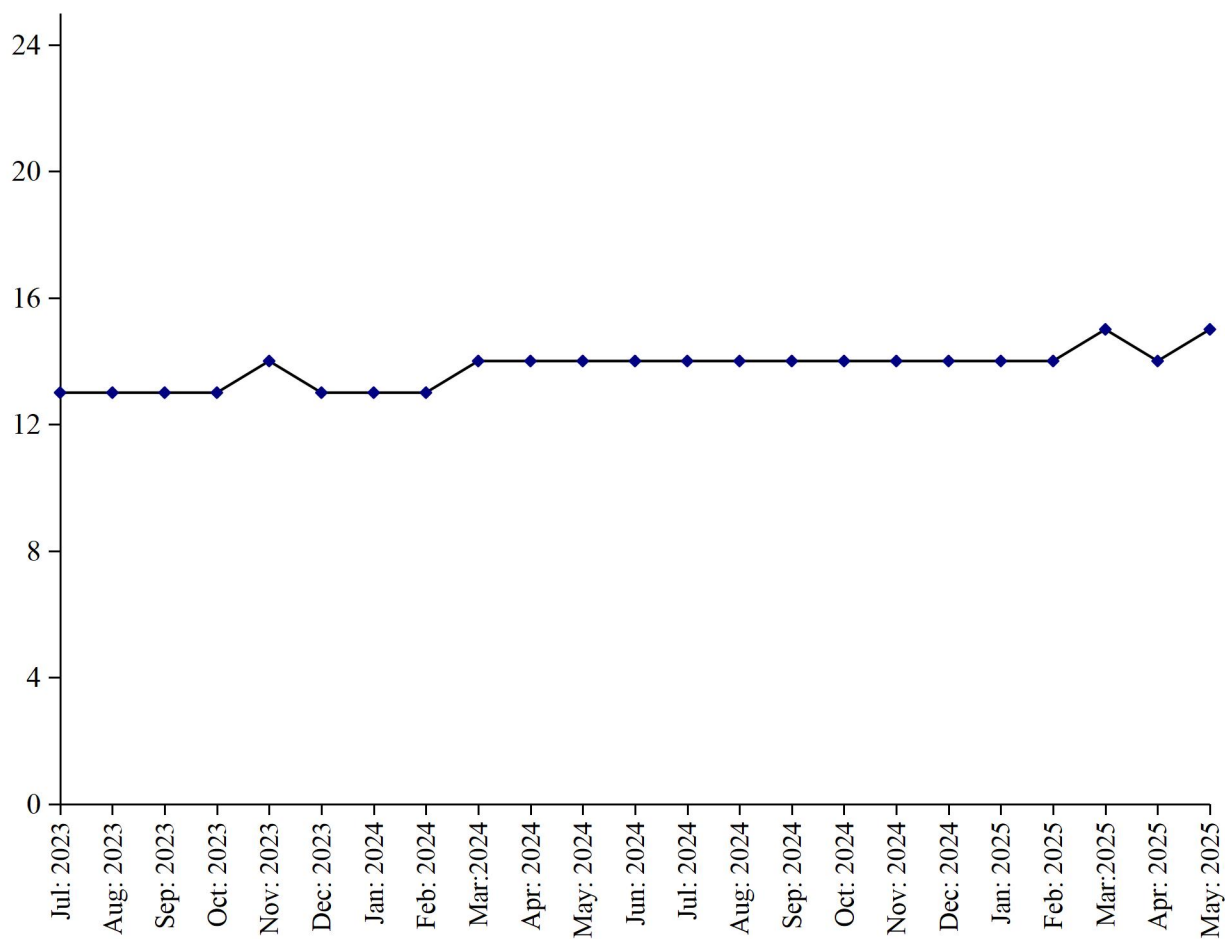
Total employment in these factories during the month was 686, which was same as the last month.

Out of this total employment, 527 were production workers.

PERFORMANCE OF BICYCLES

July 2023 to May

(000 M. Tons)



2025

ELECTRIC FANS

Coverage

This report covers one hundred and twenty six (126) factories of Electric Fans in the Punjab Province.

Production

One hundred and twenty six factories covered under the survey manufactured 262879 (ceiling fans, 168427 pedestal fans, 44230 and other fans 50222) during May, 2025, which was 7.4% higher than the last month.

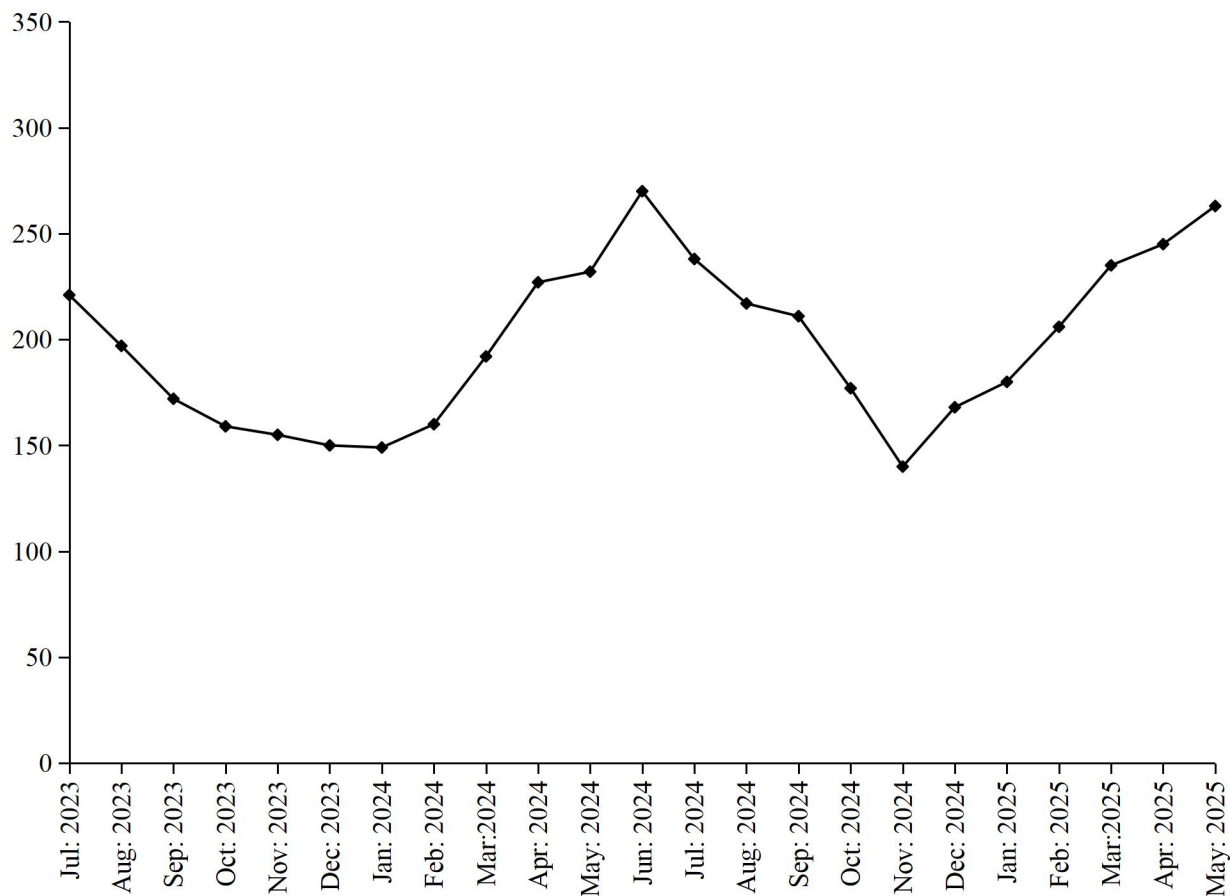
Employment

These factories reported 2298 total employment during the month, which was 0.2% higher than the last month. Out of this total employment, 1842 were production workers.

PERFORMANCE OF ELECTRIC FANS

July 2023 to May 2025

(000 Nos.)



ELECTRIC MOTORS

Coverage

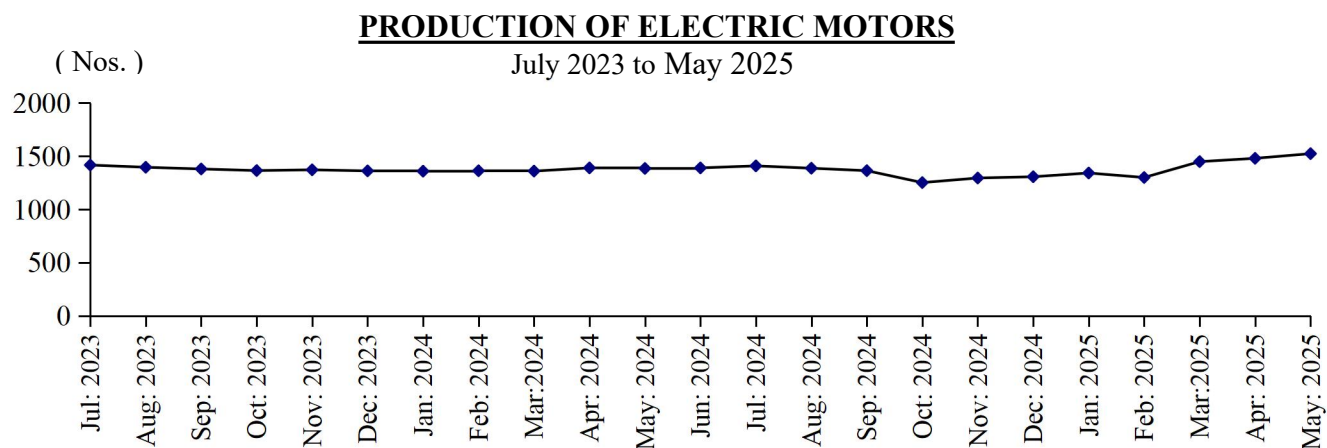
This report covers thirty (30) factories of Electric Motors in the Punjab Province.

Production

Thirty factories covered under the survey manufactured 1524 electric motors during the month, which was 3.0% higher than the last month.

Employment

Total Employment in these factories during the month which was 166, which was 0.7% higher than the last month. Out of this total employment, 136 were production workers.



DIESEL ENGINES

Coverage

This report covers fifteen (15) factories of Diesel Engines in the Punjab Province.

Production

These fifteen factories covered under the survey and 128 complete diesel engines manufactured during the month, which was 4.1% higher than the last month.

Employment

Total employment in these factories during the month was 23, which is same as it was in previous month. Out of this total employment, 16 were production workers.

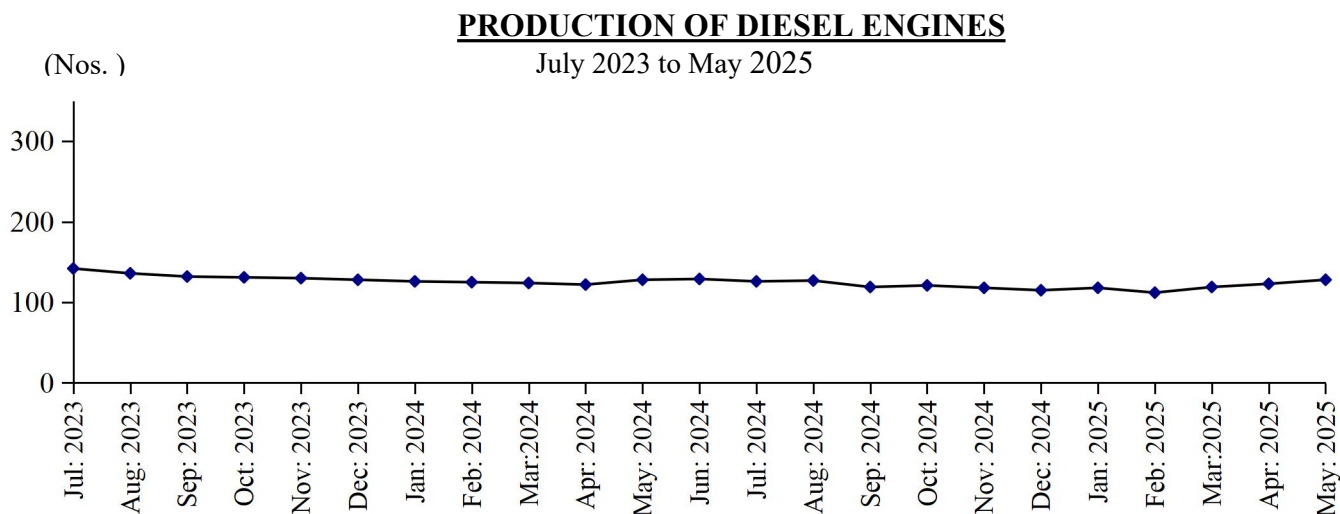


Table No: 32 MANUFACTURINGACTIVITYOFLIGHT ENGINEERING INDUSTRY

Year (July – June) / Month	Re-rolled Steel Bars / Angles (M. Tons)	Bicycles (Nos.)	Electric Fans (Nos.)	Electric Motors (Nos.)	Diesel Engines (N0s.)
2008-09	343506	419897	1697140	6604	16906
2009-10	321369	447207	2128884	7068	20157
2010-11	312433	345272	1940346	7667	10285
2011-12	289874	262096	1858883	5857	2861
2012-13	266669	232979	1909412	5752	2219
2013-14	257569	206459	1870475	9906	2117
2014-15	264406	210931	1870291	9013	2045
2015-16	320769	198966	1970506	7319	495
2016-17	367619	200218	2461369	9206	1554
2017-18	485131	202168	2498919	41793	1120
2018-19	382890	173545	2508085	56819	908
2019-20	289350	141125	2124301	39312	1294
2020-21	312922	79310	2498634	30054	1644
2021-22	308749	141236	2589903	22832	1941
2022-23	292280	146454	2181562	18756	2127
2023-24	269320	159033	2283408	16539	1553
(Jul: – May:)	<u>246144</u>	<u>145200</u>	<u>2013650</u>	<u>15149</u>	<u>1424</u>
Jul:	23257	12584	220916	1417	142
Aug:	22105	12698	196778	1396	136
Sep:	21865	12961	172135	1380	132
Oct:	21822	13061	159472	1365	131
Nov:	21899	13089	154947	1372	130
Dec:	22010	13145	150154	1362	128
Jan:	22101	13214	148714	1359	126
Feb:	22546	13404	160115	1363	125
Mar:	22846	13502	192146	1360	124
Apr:	22685	13740	226686	1390	122
May	23008	13802	231587	1385	128
Jun:	23176	13833	269758	1390	129
<u>2024-25</u>					
(Jul: – May:)	<u>265970</u>	<u>155603</u>	<u>2280051</u>	<u>15109</u>	<u>1326</u>
Jul:	23362	13817	238113	1409	126
Aug:	23625	13831	217357	1387	127
Sep:	23503	13885	210869	1364	119
Oct:	23716	13945	177099	1252	121
Nov:	23981	13988	139638	1295	118
Dec:	24781	14024	167745	1307	115
Jan:	24928	14110	180281	1342	118
Feb:	24509	14348	205891	1300	112
Mar:	24251	14571	235353	1449	119
Apr:	24701	14485	244826	1480	123
May:	24613	14599	262879	1524	128

Table No: 33 TOTAL EMPLOYMENT (Nos.) OF LIGHT ENGINEERING INDUSTRY*

Year (July – June)/ Month	Re-rolled Steel Bars / Angles (M.Tons)	Bicycles (Nos.)	Electric Fans (Nos.)	Electric Motors (Nos.)	Diesel Engines (N0s.)
2008-09	1103	2257	1894	69	200
2009-10	1134	2124	2124	63	223
2010-11	1218	2009	2120	64	191
2011-12	1193	1612	2351	64	155
2012-13	1188	1318	2172	58	147
2013-14	1269	1214	2307	64	154
2014-15	1299	1060	2208	63	154
2015-16	1317	907	2090	65	150
2016-17	1372	885	2325	121	146
2017-18	1310	883	2549	130	133
2018-19	1304	759	2673	158	52
2019-20	1013	751	1817	191	22
2020-21	1067	686	2141	197	20
2021-22	1077	686	2229	213	21
2022-23	1091	686	2092	174	24
2023-24	1086	686	2159	162	24
(Jul: - May:)	<u>1085</u>	<u>686</u>	<u>2155</u>	<u>162</u>	<u>24</u>
Jul:	1081	686	2100	163	24
Aug:	1081	686	2068	163	24
Sep:	1085	686	2183	163	24
Oct:	1081	686	2160	163	24
Nov:	1078	686	2133	163	24
Dec:	1082	686	2137	163	24
Jan:	1083	686	2142	163	24
Feb:	1085	686	2159	160	24
Mar:	1089	686	2179	160	24
Apr:	1092	686	2204	160	24
May	1094	686	2240	161	24
Jun:	1111	686	2250	161	24
<u>2024-25</u>					
(Jul: - May:)	<u>1110</u>	<u>686</u>	<u>2242</u>	<u>163</u>	<u>23</u>
Jul:	1102	686	2236	165	23
Aug:	1105	686	2219	163	23
Sep:	1107	686	2214	162	23
Oct:	1109	686	2205	161	23
Nov:	1113	686	2202	160	23
Dec:	1113	686	2230	160	23
Jan:	1115	686	2236	161	23
Feb:	1114	686	2240	161	23
Mar:	1111	686	2290	164	23
: Apr:	1112	686	2295	165	23
May:	1113	686	2298	166	23

* = Monthly averages over the eleven month.

Table No: 34 PRODUCTION WORKERS (Nos.) OF LIGHT ENGINEERING INDUSTRY *

Year (July – June)/ Month	Re-rolled Steel Bars / Angles (M.Tons)	Bicycles (Nos.)	Electric Fans (Nos.)	Electric Motors (Nos.)	Diesel Engines (N0s.)
2008-09	757	1905	1542	60	160
2009-10	782	1892	1748	57	154
2010-11	870	1843	1709	57	126
2011-12	857	1540	1904	57	99
2012-13	843	1289	1761	50	95
2013-14	905	1161	1850	55	99
2014-15	920	992	1745	54	100
2015-16	934	836	1658	56	97
2016-17	976	820	1865	113	93
2017-18	926	804	1994	119	86
2018-19	916	696	2066	122	34
2019-20	706	679	1425	147	15
2020-21	780	527	1735	151	14
2021-22	786	527	1815	157	16
2022-23	798	527	1823	145	16
2023-24	782	527	1737	135	16
(Jul: - May:)	<u>783</u>	<u>527</u>	<u>1721</u>	<u>136</u>	<u>16</u>
Jul:	802	527	1765	137	16
Aug:	802	527	1737	137	16
Sep:	774	527	1726	137	16
Oct:	774	527	1705	137	16
Nov:	771	527	1701	136	16
Dec:	775	527	1683	137	16
Jan:	775	527	1685	137	16
Feb:	780	527	1694	137	16
Mar:	784	527	1694	133	16
Apr:	784	527	1743	133	16
May	791	527	1798	134	16
Jun:	793	527	1807	135	16
<u>2023-24</u>					
(Jul: - May:)	<u>803</u>	<u>527</u>	<u>1797</u>	<u>134</u>	<u>16</u>
Jul:	795	527	1795	137	16
Aug:	798	527	1779	135	16
Sep:	799	527	1776	134	16
Oct:	801	527	1769	133	16
Nov:	806	527	1760	131	16
Dec:	806	527	1790	131	16
Jan:	809	527	1796	132	16
Feb:	810	527	1800	132	16
Mar:	803	527	1822	134	16
:	Apr:	804	527	1840	16
	May:	805	527	1842	16

* = Monthly averages over the eleven month.

PERFORMANCE OF PHARMACEUTICAL INDUSTRY

Report for the month of May 2025

Coverage

This report covers thirty six (36) Pharmaceutical Industries in the Punjab Province.

Production

Overall production of these 36 pharmaceutical factories during the month was 0.2% and 2.7% higher than May, 2025 and May 2024 respectively.

These factories produced 299728 thousand Nos. of Tablets, 1614 thousand Ltrs., of Liquids/Syrups, 55164 thousand Nos. of Capsules, 13611 thousand Nos. of Injections, 53200 kgs. of Ointments and 3 thousand Ltrs. of Galanicals (Tincture/Spirits). The production of Tablets, Liquid, Capsules, 0.4%, 2.4%, 0.1% higher.

whereas the production of Injections, Ointment was 1.2%, 4.1%, 0.1% and lower than the last month respectively.

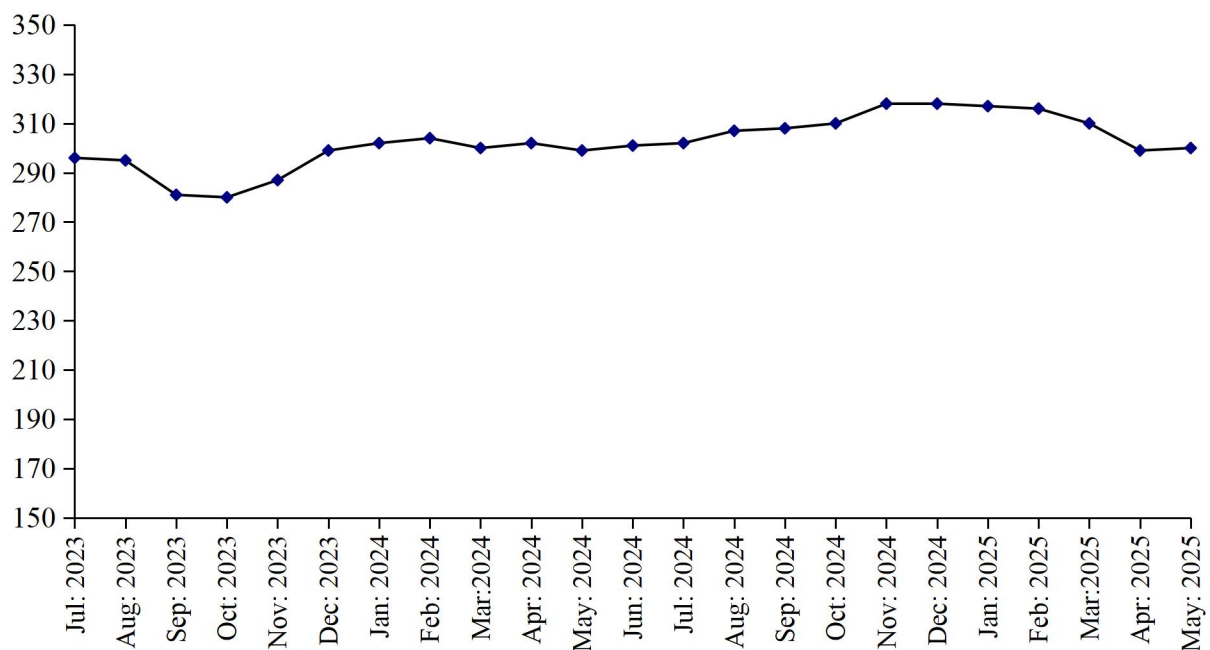
Employment

Total employment in these factories during the month was 8103 which is same as the last month. Out of this total employment 3315 were production workers. Total wages/salaries during the month were 306 million rupees.

(000 Nos.)

PRODUCTION OF TABLETS

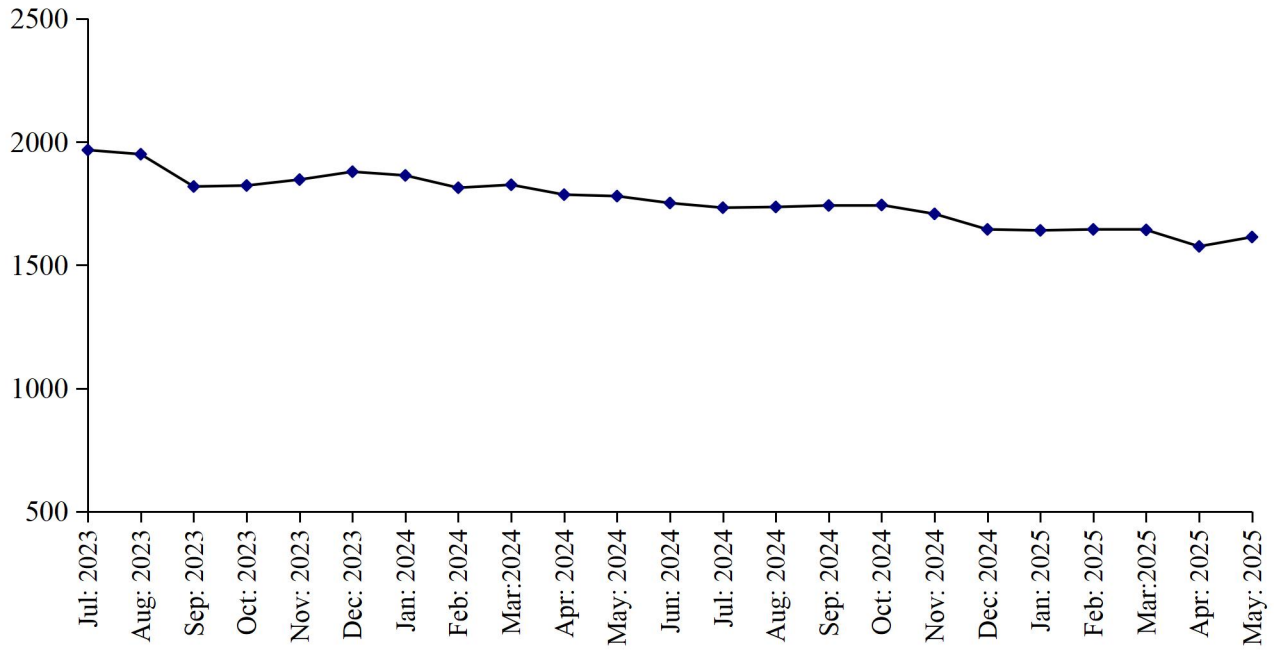
July 2023 to May 2025



PRODUCTION OF LIQUIDS

July 2023 to May 2025

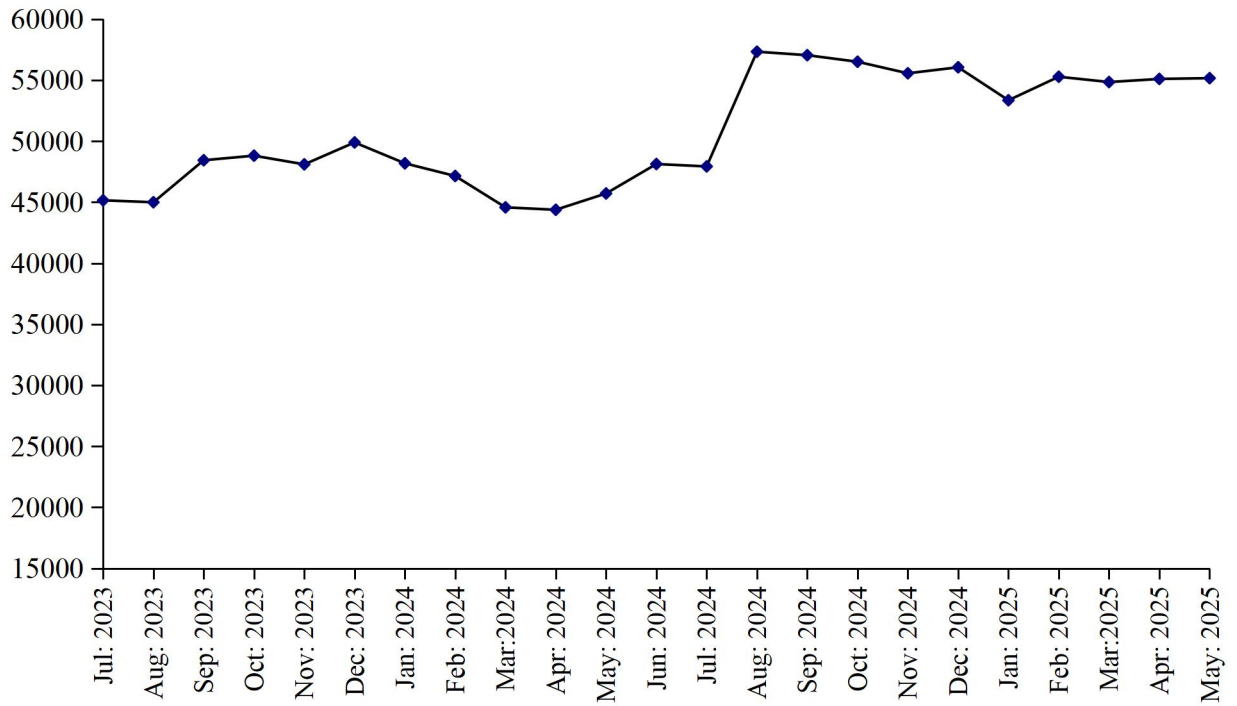
(000 Nos.)



PRODUCTION OF CAPSULES

(000 Nos.)

July 2023 to May 2025



PRODUCTION OF INJECTIONS

(000 Nos.)

July 2023 to May 2025

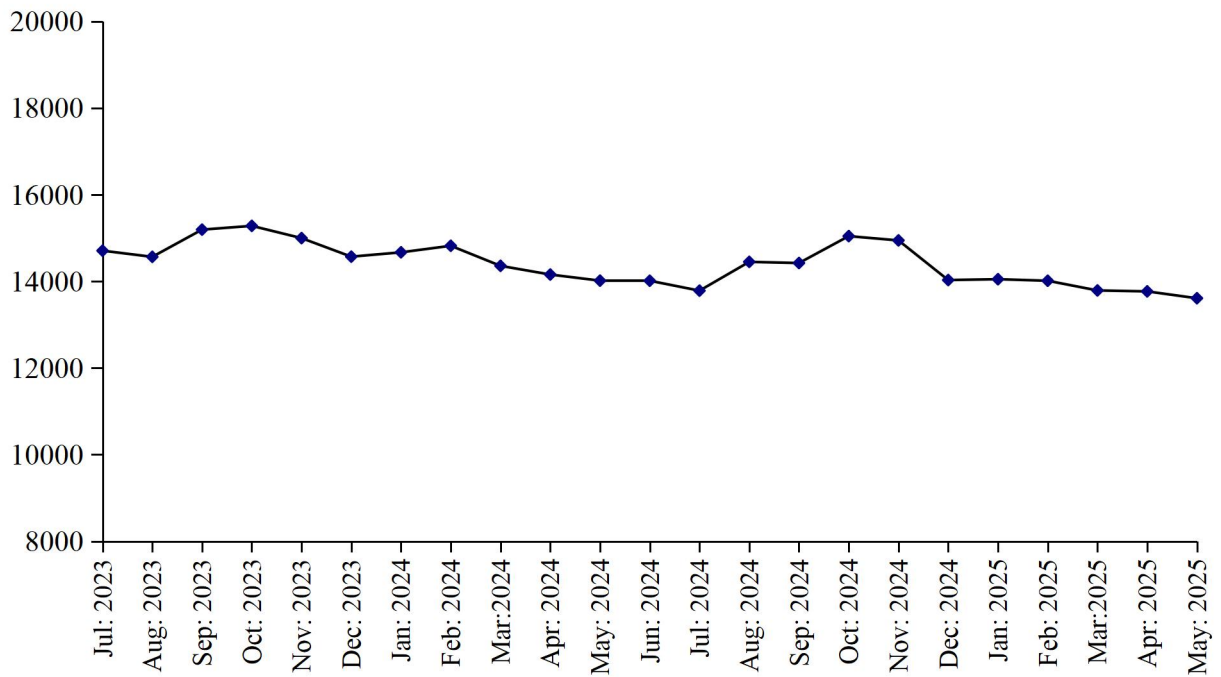


Table 35:MANUFACTURING ACTIVITY OF PHARMACEUTICAL INDUSTRY

Year (July – June) / Month	No. Of Reporting Factories	P R O D U C T I O N					
		Tablets (000 Nos.)	Liquids/ Syrups (000Ltrs.)	Capsules (000 Nos.)	Injections (000 Nos.)	Ointments (Kgs.)	Galanicals Tinctures/ Spirits (000 Ltrs.)
2008-09	40	2286638	21267	121093	89615	105595	73
2009-10	40	2373104	23222	134594	99608	189148	62
2010-11	41	2486495	25211	165294	109708	187430	50
2011-12	41	2487861	25546	224249	132544	209841	41
2012-13	40	2873661	35457	339450	119598	196597	34
2013-14	36	2639613	16264	261919	137051	238299	185
2014-15	36	2593592	18838	310520	140827	229778	75
2015-16	36	2823449	21636	339151	133352	242367	46
2016-17	36	2530717	24085	295120	194717	732361	343
2017-18	35	2893883	15602	371962	149607	570468	121
2018-19	36	2826410	14207	420278	144788	567249	39
2019-20	36	2847315	14011	447276	119438	640721	74
2020-21	36	3096704	17504	481498	110866	595075	69
2021-22	36	3249998	15091	501673	180141	518897	54
2022-23	36	3195113	19346	513243	187290	647041	36
2023-24	36	3546637	22107	563550	175372	616735	27
(Jul: - May:)	36	3245408	20355	515169	161357	567456	25
Jul:	36	295912	1967	45157	14709	52097	3
Aug:	36	295092	1950	44997	14567	54447	3
Sep:	36	280967	1819	48440	15195	52675	2
Oct:	36	279900	1823	48562	15282	51915	2
Nov:	36	287402	1847	48102	14999	52049	2
Dec:	36	298724	1879	49898	14578	51458	3
Jan:	36	302102	1864	48187	14671	52119	2
Feb:	36	304440	1814	47149	14822	53003	2
Mar:	36	300476	1826	44579	14359	51549	2
Apr:	36	301518	1786	44381	14158	49816	2
May	36	298875	1780	45717	14017	46328	2
Jun:	36	301229	1752	48129	14015	49279	2
2023-24							
(Jul: - May:)	36	3403910	18427	614190	155919	532341	31
Jul:	36	301913	1733	57933	13786	48251	2
Aug:	36	307097	1736	57333	14451	48507	2
Sep:	36	307739	1742	57048	14424	47999	2
Oct:	36	310114	1744	56509	15045	48251	2
Nov:	36	317633	1708	55564	14946	51781	2
Dec:	36	317950	1645	56056	14031	47051	4
Jan:	36	316845	1641	53355	14050	47693	4
Feb:	36	316088	1645	55281	14015	47891	4
Mar:	36	310221	1643	54846	13791	48491	3
Apr:	36	298584	1576	55101	13769	53226	3
May	36	299728	1614	55164	13611	53200	3

Table 36: EMPLOYMENT AND WAGES / SALARIES OF PHARMACEUTICAL INDUSTRY

Year (July – June) / Month	No. Of Reporting Factories	E M P L O Y M E N T (Nos.)			WAGES /SALARIES (000 Rs.)	
		Total	Production Workers	Office Staff	Total	Production Workers
2008-09	40	5737	3115	2622	75446	35208
2009-10	40	5967	3294	2673	84295	41482
2010-11	41	7468	3475	3993	109964	38722
2011-12	41	7802	3518	4284	122250	38078
2012-13	40	7619	3397	4222	128323	37873
2013-14	36	7255	3043	4212	141281	37844
2014-15	36	7271	3136	4135	149144	37763
2015-16	36	6887	2887	4000	142875	38347
2016-17	36	7069	3338	3731	166039	42770
2017-18	35	7190	3095	4095	180431	46461
2018-19	36	7287	3080	4207	186677	48238
2019-20	36	7926	3244	4682	215121	53959
2020-21	36	7726	3388	4338	241910	59134
2021-22	36	8092	3318	4774	263957	61029
2022-23	36	8048	3290	4758	277034	64865
2023-24	36	8060	3294	4765	303965	73620
(Jul: - May:)	<u>36</u>	<u>8058</u>	<u>3293</u>	<u>4765</u>	<u>3031809</u>	<u>73253</u>
Jul:	36	8030	3321	4709	293999	69000
Aug:	36	8033	3324	4709	293800	69119
Sep:	36	8054	3292	4762	293200	69219
Oct:	36	8054	3290	4764	294000	69300
Nov:	36	8060	3297	4763	303010	73029
Dec:	36	8063	3300	4763	305110	74000
Jan:	36	8065	3302	4763	308510	75483
Feb:	36	8071	3271	4800	309500	76001
Mar:	36	8067	3272	4795	310200	76200
Apr:	36	8070	3275	4795	311115	76800
May	36	8072	3276	4796	312546	77632
Jun:	36	8084	3304	4780	312599	77700
<u>2024-25</u>						
(July-May:)	<u>36</u>	<u>8098</u>	<u>3315</u>	<u>4783</u>	<u>304655</u>	<u>74450</u>
Jul:	36	8086	3307	4779	302969	73706
Aug:	36	8090	3310	4780	304568	74000
Sep:	36	8095	3313	4782	304210	74006
Oct:	36	8097	3314	4783	302909	74000
Nov:	36	8098	3315	4783	304316	74105
Dec:	36	8100	3318	4782	304616	74302
Jan:	36	8102	3320	4782	305119	74932
Feb:	36	8100	3318	4782	305600	74999
Mar:	36	8103	3315	4788	305400	74898
Apr:	36	8104	3316	4788	305800	75001
May:	36	8103	3315	4788	305700	75002

* = Monthly average over the eleven month.

**LIST OF IMPORTANT TELEPHONES
BUREAU OF STATISTICS, PUNJAB AND ITS FIELD OFFICES**

NAME OF OFFICERS	DESIGNATION	OFFICE TELEPHONE
Sajid Rasul	Director General	042-99232901
Saira Abid	Deputy Director (CIS)	042-99232907
Qaiser Rashid	Assistant Director (CIS)	-do-
Sana Ashraf	Statistical Officer (CIS)	-do-
Muhammad Kashif	Statistical Officer (CIS)	-do-
Inamullah	Statistical Officer (CIS)	-do-
Muhammad Irfan	Statistical Officer (CIS)	-do-
Muhammad Haris	Statistical Officer (CIS)	-do-
Zia Ahmad Babar	Statistical Officer (CIS)	-do-
DESIGNATION	BUREAU'S FIELD OFFICES/ADDRESS	
Deputy Director	Tosha Khana Near Cholistan Development Authority, Bahawalpur	062-9250193
Deputy Director	House No. 70-A, Khyaban-e-Sarwar, Dera Ghazi Khan	064-9330108
Deputy Director	2nd Floor Azam Plaza, Near Passport Office, Bukhari Road, Gujranwala	055-9200419
Deputy Director	P-45, Main Road, Al Faiz Colony, Satiana Road Faisalabad	041-9330531
Deputy Director	Near Circuit House, Multan	061-9200930
Deputy Director	Abad Complex Murree Road, Rawalpindi	051-9292035
Deputy Director	52 Umar Park, Sargodha	048-3765387
Deputy Director	34-H Shadman Town, Sahiwal	0404-4507560
Assistant Director	House No. 24, Z-Block, Model Town, Bahawalnagar	063-9330002
Assistant Director	Mohallah Mandi Town, House No.198 Block No. 12 Near Pracha Filling Station, Jhang Road, Bhakkar	0453-9200338
Assistant Director	Street No.4 2nd Floor Mohallah Shumali Chah Loharn Behkari Road, Chakwal	0543-554086
Assistant Director	House No.720-A Gulberg Colony, Kasur	049-2723615
Assistant Director	House No. 190, Employees Colony, Layyah	0606-920273
Assistant Director	Gallah Huntar Pura, Opposite Larri Adda, Christian Town, Sialkot	052-4291219
Assistant Director	Opposite Govt. Vocational College, Nabi Pura, Hiran Minar Road, Sheikhupura	056-3791770